



## MEMORANDUM

TO: SLDMWA Board of Directors, Alternates

FROM: John Brodie, Water Resources Programs Manager  
Joe McGahan, Regional Drainage/Westside Watershed Coalition Coordinator

DATE: October 5, 2023

RE: Activity Agreements – Staff Report for September, 2023

This memorandum serves as the Staff Report for September 2023 regarding specified<sup>1</sup> Water Authority activities not separately addressed on the Board meeting agenda.

### 1. Integrated Regional Water Management (IRWM) Activity Summary

#### **General Westside-San Joaquin Integrated Regional Water Management Plan (IRWMP)**

Staff is working with water agencies in the West Side San Joaquin IRWM Region to get a better understanding of existing efforts to assist Disadvantaged Communities (DACs) in the region with drinking water concerns. It's part of a larger project that will be a collaboration with the non-profit Self Help Enterprises to update water needs assessments for those communities. A volunteer project steering committee has been formed and will meet with staff from the Authority and Self-Help Enterprises to guide the work.

The California Department of Water Resources granted an extension request for the Proposition 1, Round 1 IRWM Implementation grant. The Orestimba Creek Recharge and Recovery project, sponsored by the Central California Irrigation District, and the Broadview Aquifer Recharge and Recovery Project, sponsored by Westlands Water District, each experienced delays in getting to final construction activities. The agreement end date was extended to December 31, 2024.

### 2. Sustainable Groundwater Management Activity (SGMA) Activity Summary

#### **General SGMA Activities**

Fall groundwater level monitoring is underway. GSAs have until the end of October to collect groundwater level data. Water quality data collected this summer has been submitted to DWR as required by the regulation.

<sup>1</sup> For the sake of completeness, this includes those Activity Agreements that have been approved by the Board of Directors, but not yet signed by all interested members and/or participants (i.e., the Los Vaqueros Expansion Project Activity Agreement, the Exchange Contractors 2019-2023 Transfer Program Activity Agreement, and the Westside-San Joaquin Integrated Regional Water Management Activity Agreement).

Work continues throughout the Subbasin on various projects funded by the SGMA Round 1 Implementation Grant. All six Groundwater Sustainability Plan (GSP) groups received funding for a variety of groundwater enhancement projects, efforts to fill data gaps, and public outreach about SGMA compliance activities. The Subbasin received a total of \$7.6 million dollars, more than half of that total is earmarked for groundwater enhancement projects.

### **Coordinated Activities**

GSAs continue efforts to consolidate the GSPs into one as the Subbasin's strategy to achieve "approved" status under SGMA. DWR ruled the Subbasin's previously submitted six GSPs as "inadequate" in March, triggering State Water Resources Control Board (SWRCB) oversight of the GSP amendment process. SWRCB staff had a favorable reaction to the Subbasin's intention to develop a single GSP. Coordination Committee members and technical consultants are meeting with SWRCB staff on a regular basis in an attempt to receive guidance on a proposed document.

GSPs for six of the critically over-drafted Subbasins in the San Joaquin Valley must be amended to SWRCB standards. The Delta-Mendota Subbasin faces a potential September 2024 probationary hearing before the SWRCB, according to a draft schedule released in June. Based on the draft schedule, Delta-Mendota would be the fifth subbasin to face a possible probationary hearing. GSAs intend to submit the single GSP to the SWRCB in July 2024 to possibly avoid the scheduled probationary hearing.

Under the process as outlined at a June SWRCB meeting, if a basin is placed on probation, all well owners must register wells with the state and report extractions based on meters that will be required. Extractions must be reported annually, and well owners (excepting *de minimus* domestic wells) will pay fees to the SWRCB based on extractions. Subbasins will have one year from being placed on probation to correct GSPs, at which time the SWRCB may impose its own management actions.

### **3. Drainage Activity Summary**

#### **Grassland Basin Drainage Management Steering Committee Activity Summary**

The Grassland Bypass Channel gates were closed on March 24<sup>th</sup>, ending the discharge of storm-induced drainage from the Grassland Drainage Area. Remaining drainage flows have been managed internally by the San Joaquin River Improvement Project since that time. No significant storms are forecasted and it is not anticipated the gates will be opened again in the near future.

#### GBP Activities

- General administration: Review and approve consultant billing. Field review of drainage conditions and correspondence with SJRIP manager.
- Mud Slough Restoration Project: The intent of this project is to restore Mud Slough in accordance with the 2010 MOU between the Authority and California Department of Fish and Wildlife (CDFW). The Water Authority adopted the CEQA for the project in December 2021, which was not challenged. GBP management staff had a meeting with CDFW on

August 15<sup>th</sup> during which CDFW committed to providing a revised MOU that would outline the specific tasks required to complete restoration of Mud Slough.

- Grassland Water District Monitoring Wells: A total of 10 observation wells are planned to be installed to monitor groundwater levels and quality within the San Joaquin River Improvement Project and in a portion of Grassland Water District to the north. All 10 observation wells have been installed, with the last well completed in June. The GBD are working on developing a monitoring plan to measure groundwater levels and quality.
- Compliance Monitoring: Monitoring in compliance with the 2019 revised WDRs and 2019 Use Agreement is a continuous and daily effort. Regular flow, water quality and toxicity monitoring is required at eight locations at a frequency that varies from monthly to daily. Special monitoring for fish and invertebrate selenium levels has occurred annually, along with efforts to collect particulate samples for selenium analysis.
- Grassland Drainage Area Coalition: Work continues to provide coverage for farmers within the Grassland Drainage Area for the Irrigated Lands Regulatory Program. Reporting forms were sent to farmer members in late 2022 for reporting 2022 nitrogen application.
- Proposition 84 Grant: Work is ongoing to support the Prop 84 Grant administered by Panoche Drainage District for improvements to the San Joaquin River Improvement Project. The Short Term Storage Basins construction is in progress but will take some time to complete. Other projects are in design phase.
- 13267 Order Report Part 2: The Authority received a 13267 Order from the Central Valley Regional Water Quality Control Board (Regional Board) in February 2020. This order required the Authority to submit two reports on water quality and fish tissue data, the first of which was submitted in July of 2021. The second, and final report, is in progress and will be submitted this fall.

#### **San Joaquin Valley Drainage Authority Activity Summary**

- Participated in conference calls with the Regional Board to respond to their questions on surface water quality management plans and required follow up. Working with the Regional Board to formulate a more efficient focused outreach program to address sediment and surface water quality impacts to receiving waters.
- Westside San Joaquin River Watershed Coalition: Work continues to provide coverage under the Irrigated Lands Regulatory Program for farmers within the Westside San Joaquin River Watershed Coalition. The work includes managing the monitoring program, assisting farmers with the necessary reporting to comply with the program and preparing reports for the Regional Board. Coalition staff submitted membership roll to the Regional Board on July 31, 2023. Sent out follow-up MPIR forms to growers for 2020 Nitrogen outliers and 2022 pyrethroid exceedances. Prep for upcoming pyrethroid Focused Outreach meeting for the Salt Slough watershed.
- Groundwater Protection Formula, Values and Targets: Coalitions have developed a methodology to establish nitrogen loading Values and Targets as required by the WDRs. Approval of the targets was granted June 30, 2023 with two conditions that must be met by April 2024 and July 2024 respectively. Conduct strategy meetings on methods to inform growers about the program and their needed cooperation to meet the watershed's targets.

- Management Practices Effectiveness Program: Attend conference call meetings of the MPEP group. Developing work schedules to implement nitrogen control measures for farmer member compliance. Work with other Coalitions to produce the required final report.
- Central Valley Groundwater Monitoring Collaborative: Attend conference call meetings to give direction to program. Work with other coalitions and staff to develop an updated groundwater monitoring CQAP.
- Management Zones: Work continued to develop plan for compliance within the Westside Coalition. Attend Valley Water Collaborative budget committee meetings to establish SJVDA FY25 Management Zone budget. Prepare the contracts and agreements that will be used going forward. Contact non-ag Permittees to inform them of the program. Attend Central Valley Salinity Coalition meetings to inform SJVDA Management Zone formation.
- Salt Control Program: Phase I of the Salt Control Program involves the development of a Prioritization and Optimization Study (P&O Study). Consultants are compiling data in order to characterize current salinity conditions of both surface and groundwater across the Central Valley. This work is being supported through the SJVDA budget.
- Prop 84 Real Time Program Grant: Work continues on maintaining the stations, gathering monitoring data, and computer modeling to determine and manage salt discharges to the San Joaquin River. As of March 2023, grant funds billed is \$595,942 with \$259,058 remaining. The project has been extended to December of this year.

VIII B.

# SAN JOAQUIN VALLEY DRAINAGE AUTHORITY

Box 2157, Los Banos, Ca 93635  
Phone: 209-826-9696 Fax: 209-826-9698

**DATE:** September 27, 2023

**SUBJECT: THE OCTOBER 3, 2023 MEETING OF THE SJVDA  
BOARD OF DIRECTORS HAS BEEN CANCELLED**

**TO: BOARD OF DIRECTORS**

**Del Puerto Water District**  
Adam Scheuber, Director/Chair  
Jarod Lara, Alternate

**San Luis Water District**  
Janet Roy, Director/Vice-Chair  
Lon Martin, Alternate

**Pacheco Water District**  
Chase Hurley, Director  
Vacant, Alternate

**Tranquillity Irrigation District**  
Jerry Salvador, Director Alternate  
Danny Wade, Alternate

**Panoche Drainage District**  
Vacant, Director  
Vacant, Alternate

**Twin Oaks Irrigation District**  
Mark Child, Director  
Ryan Vieira, Alternate

**Patterson Irrigation District**  
Dan Robinson, Director  
Vince Lucchesi, Alternate

**West Stanislaus Irrigation District**  
Bobby Pierce, Director  
Lee Deldon, Alternate

**San Joaquin River Exchange  
Contractors Water Authority**  
Chris White, Director  
John Wiersma, Alternate

**FROM:** Orvil Mckinnis (by Cheri Worthy)

SJVDA Board of Directors Meeting Scheduled October 3, 2023  
HAS BEEN CANCELLED

**NOTICE IS HEREBY GIVEN** that the regular October meeting of the SAN JOAQUIN VALLEY DRAINAGE AUTHORITY BOARD OF DIRECTORS, HAS BEEN CANCELLED.

Please give us a call if you have any questions. Thank you!

Blank



# DELTA - MENDOTA SGMA

## Special Meeting of the Delta-Mendota Subbasin Coordination Committee

Thursday September 21, 2023, 1:00 PM

### AGENDA

1. Call to Order/Roll Call
2. Opportunity for Public Comment

### Report Items

3. Committee to Discuss September 13, 2023 Meeting with State Water Board Staff, Martin/Stilwell/Dutton
  - a) SWRCB Staff Input on Water Quality Monitoring, Constituents of Concern, and SMCs
  - b) SWRCB Staff Input on Well Mitigation Program(s)
  - c) Discussion of Next Steps for October 11, 2023 Meeting
4. Committee to Discuss Future Workshop(s) with SWRCB Board Members and Staff in the Subbasin, Martin/Ortega
5. Committee to Discuss EKI Requests for Information (RFI)s, Dutton
6. Committee to Review Monitoring Exceedances, Dumas/Dutton
7. Next Steps
8. Reports Pursuant to Government Code Section 54954.2(a)(3)
9. Future Delta-Mendota Subbasin Coordination Committee Meetings
  - a. Monday October 9, 2023: 1:00 PM
  - b. Monday November 13, 2023 1:00 PM
  - c. Special Meetings May Be Scheduled at the Request of the Committee.

### 10. ADJOURNMENT

Persons with a disability may request disability-related modification or accommodation by contacting Cheri Worthy or Sandi Ginda at the Water Authority Office, 842 6<sup>th</sup> Street, P.O. Box 2157 Los Banos, CA 93635, via telephone at (209) 826-9696, or via email at [cheri.worthy@sldmwa.org](mailto:cheri.worthy@sldmwa.org) or [sandi.ginda@sldmwa.org](mailto:sandi.ginda@sldmwa.org). Requests should be made as far in advance as possible before the meeting date, preferably 3 days in advance of regular meetings or 1 day in advance of special meetings/workshops.

Blank



# **DELTA - MENDOTA SGMA**

## **Meeting of the Delta-Mendota Subbasin Coordination Committee ad hoc Technical Subcommittee**

**Monday September 25, 2023, 1:00 PM**

<https://us02web.zoom.us/j/82646493319?pwd=MitzYTZrYk93NHJFbVRYKzh4QlloUT09>

**Meeting ID: 826 4649 3319**

**Passcode: 438982**

**+1 669 900 6833 US**

### **AGENDA**

1. Subcommittee to Discuss Requests for Information One through Three Review, Dutton
2. Subcommittee to review Current Proposal for Subsidence SMCS, Dutton
3. Subcommittee to Discuss Strategies for Water Quality SMCs, Dutton
4. Subcommittee to Discuss a Framework for a Subbasin Well Mitigation Program, Dutton
5. Next Steps/Report to the Full Coordination Committee, Brodie
6. Next Meeting

Blank



NORTHERN &  
CENTRAL  
DELTA-  
MENDOTA

**Meeting of the Northern Delta-Mendota Region Management Committee**

**Wednesday, October 4, 2023, 2:00 PM**

**AGENDA**

1. Call to Order/Roll Call
2. Committee to Consider Corrections or Additions to the Agenda of Items, as authorized by Government Code Section 54950 et seq.
3. Opportunity for Public Comment

**Consent Calendar**

4. Committee to Review and Take Action on Consent Calendar, Pierce/Brodie
  - a. Minutes for the September 6, 2023 Meeting of the Northern Delta-Mendota Region Management Committee
  - b. Budget-to-Actual Report (through July 2023)
  - c. Grant Reimbursement Summary Report

**Action Items**

5. Committee to Consider Authorizing Its Representative to the Coordination Committee to Approve the Special Projects Agreement and Cost Share Split for Preparation of a Single GSP for the Subbasin, Pierce/Brodie/Layne
6. Committee to Consider Authorizing Its Representative to the Coordination Committee to Approve the Memorandum of Agreement for the Subbasin Under a Single GSP, Pierce/Layne/Brodie

**Report Items**

7. Committee to Discuss FY 2025 Budget Process, Brodie
8. Committee to Discuss Special Coordination Committee-GSA Information Meeting, Lucchesi/Brodie
9. Committee to Discuss Coordination Committee Ad hoc Technical Subcommittee Meeting, Schueber, Dumas

10. Committee to Discuss Potential Subbasin Tours for State Water Board Members, Brodie
11. Committee to Discuss Well Mitigation Program in Development of the Single GSP, Lucchesi/Brodie/Dutton
12. Committee to Discuss EKI Requests for Information for the Single GSP, Dutton
13. Committee to Discuss Representative Monitoring Network Wells, Dutton/Dumas/Brodie
14. Report of the Northern Delta-Mendota Representative to the Coordination Committee, Lucchesi
15. Committee to Discuss 2023 GSP Implementation
  - a. 2023 GSP Implementation Activities Review, Dutton
  - b. 3-Month Look-Ahead Schedule, Dutton
  - c. Fall 2023 Water Level Monitoring, Dumas
  - d. Stakeholder Outreach and Engagement, Brodie
16. Committee to Discuss Potential Additional Funding Opportunities, Brodie
17. Next Steps
18. Reports Pursuant to Government Code Section 54954.2(a)(3)
19. Future Meetings
  - a. Northern Delta-Mendota Region Management Committee
    - i. Wednesday, November 1, 2023 at 2:00 PM
    - ii. Wednesday, December 6, 2023 at 2:00 PM
  - b. Delta-Mendota Subbasin Coordination Committee
    - i. Monday, October 9, 2023 at 1:00 PM
    - ii. Monday, November 13, 2023 at 1:00 PM
    - iii. Monday, December 11, 2023 at 1:00 PM
    - iv. Additional Coordination Committee Meetings may be scheduled
20. ADJOURNMENT

Persons with a disability may request disability-related modification or accommodation by contacting Cheri Worthy or Sandi Ginda at the San Luis & Delta-Mendota Water Authority Office, 842 6th Street, P.O. Box 2157, Los Banos, California 93635, via telephone at (209) 826-9696, or via email at [cheri.worthy@sldmwa.org](mailto:cheri.worthy@sldmwa.org) or [sandi.ginda@sldmwa.org](mailto:sandi.ginda@sldmwa.org). Requests should be made as far in advance as possible before the meeting date, preferably 3 days in advance of regular meetings or 1 day in advance of special meetings/workshops.

# **DELTA - MENDOTA SGMA**

## **Meeting of the Delta-Mendota Subbasin Coordination Committee**

**Monday October 9, 2023, 1:00 PM**

### **AGENDA**

1. Call to Order/Roll Call
2. Committee to Consider Corrections or Additions to the Agenda of Items, as Authorized by Government Code Section 54950 et seq.
3. Opportunity for Public Comment

#### **Consent Calendar**

4. Committee to Review and Take Action on the Consent Calendar (Hopkins/Brodie)
  - a) Minutes of the September 11, 2023 Meeting of the Committee
  - b) Minutes of the September 21, 2023 Special Meeting of the Committee
  - c) Coordination Committee Budget to Actual Report (July 2023)
  - d) Grant Reimbursement Summary Report

#### **Action Items**

5. Committee to Consider Approval of the Special Projects Agreement and Cost Share Split for Preparation of a Single GSP for the Subbasin, Brodie/Layne
6. Committee to Consider Approval of the Memorandum of Agreement for the Subbasin Under a Single GSP, Layne/Brodie

#### **Report Items**

7. Committee to Discuss FY 2025 Budget Process, Brodie
8. Committee to Discuss September 25, 2023 Ad Hoc Technical Committee Meeting, Brodie/Dutton
9. Committee to Discuss Subsidence Data, Data Gaps, and SMCs, Dutton
10. Committee to Discuss Subbasin Water Budget, Brodie/Martin
11. Committee to Discuss October 11 Technical Issues Meeting with State Water Board Staff, Hurley/Martin/Stilwell/Dutton

12. Committee to Discuss October 11 Subbasin Tour for SWRCB Member D'Adamo, Hurley/Martin/Stilwell/Petersen
13. Committee to Discuss Future Subbasin Tours for SWRCB Members and Staff, Hurley/Martin/Stilwell
14. Committee to Discuss Well Mitigation Policy, Brodie/Dutton/Layne
15. Committee to Discuss EKI Requests for Information (RFI) #s Two and Three, Dutton
16. Committee to Discuss Revision of the Representative Monitoring Network, Dutton
17. Committee to Discuss Design of Interconnected Surface Water Monitoring Network for the Delta-Mendota Subbasin, Halligan/Francis
18. Committee to Discuss Other Tasks in the SGMA Round 1 Implementation Grant, Brodie
19. Committee to Review Monitoring Exceedances, Dumas/Dutton
20. Committee to Discuss GSP Implementation Schedule, Dutton
21. Committee to Discuss Available Funding Opportunities, Brodie
22. Next Steps
23. Reports Pursuant to Government Code Section 54954.2(a)(3)
24. Future Delta-Mendota Subbasin Coordination Committee Meetings
  - a. Monday November 13, 2023 1:00 PM
  - b. Monday December 11, 2023 1:00 PM
  - c. Future Special Meetings May Be Scheduled at the Request of the Committee.

25. **ADJOURNMENT**

Persons with a disability may request disability-related modification or accommodation by contacting Cheri Worthy or Sandi Ginda at the Water Authority Office, 842 6<sup>th</sup> Street, P.O. Box 2157 Los Banos, CA 93635, via telephone at (209) 826-9696, or via email at [cheri.worthy@sldmwa.org](mailto:cheri.worthy@sldmwa.org) or [sandi.ginda@sldmwa.org](mailto:sandi.ginda@sldmwa.org). Requests should be made as far in advance as possible before the meeting date, preferably 3 days in advance of regular meetings or 1 day in advance of special meetings/workshops.

# DELTA-MENDOTA SUBBASIN RESPONSE TO INADEQUATE DETERMINATION

9 OCTOBER 2023

COORDINATION COMMITTEE

**ekl** environment  
& water



## **AGENDA**

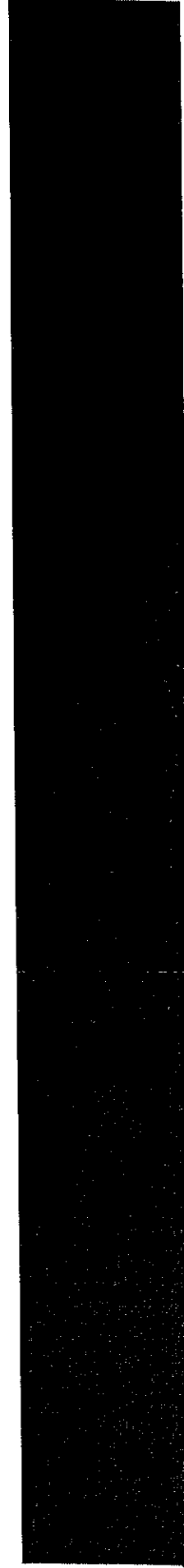
- 9. Subsidence Data, Data Gaps, and SMCs
- 10. October 11<sup>th</sup> Technical Issues Meeting with SWRCB Staff
- 14. Request for Information Status
- 15. Representative Monitoring Network Revisions
- 20. GSP Implementation Schedule

eki

24

Draft – For discussion purposes only

## 9. LAND SUBSIDENCE



eki

45

3

85-

---

## CONTEXT – WHAT OTHER BASINS ARE DOING

- Chowchilla Subbasin
- Tule Subbasin
- Merced Subbasin

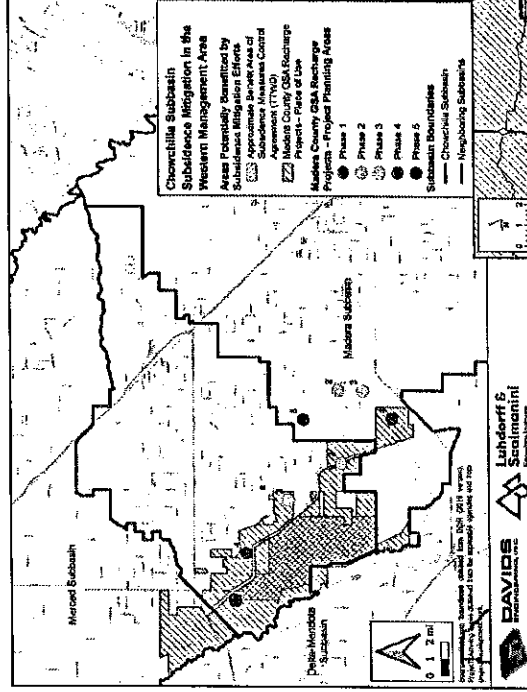
eki

46

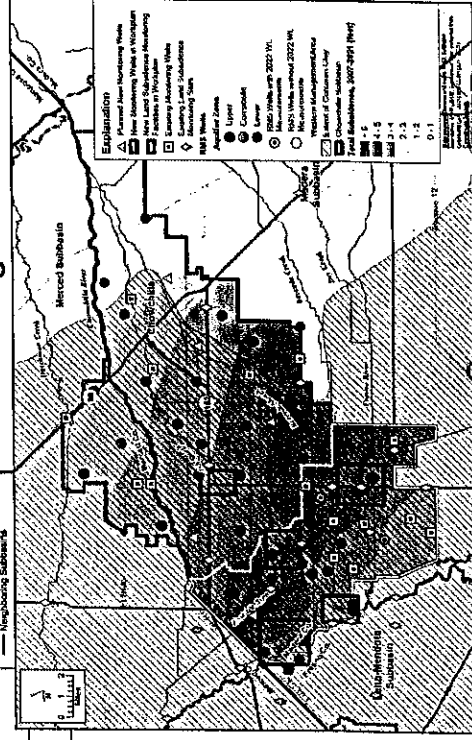
86

# CHOWCHILLA SUBBASIN'S APPROACH TO SUBSIDENCE

- Subbasin is divided into Western (significant subsidence concerns) and Eastern (lesser subsidence concern) management areas.
- Conducted Infrastructure Sensitivity Assessment
- MT is 0 ft/year subsidence (after 2040)
- UR if 75% of RMS in either management area exceed MTs for 2 years
- Existing subsidence monitoring network to be expanded
- Subsidence Control Measures Agreement provides surface water in exchange for Lower Aquifer pumping restrictions
- Planned groundwater banking in Upper Aquifer to shift extractions away from Lower Aquifer



Existing and planned subsidence monitoring network

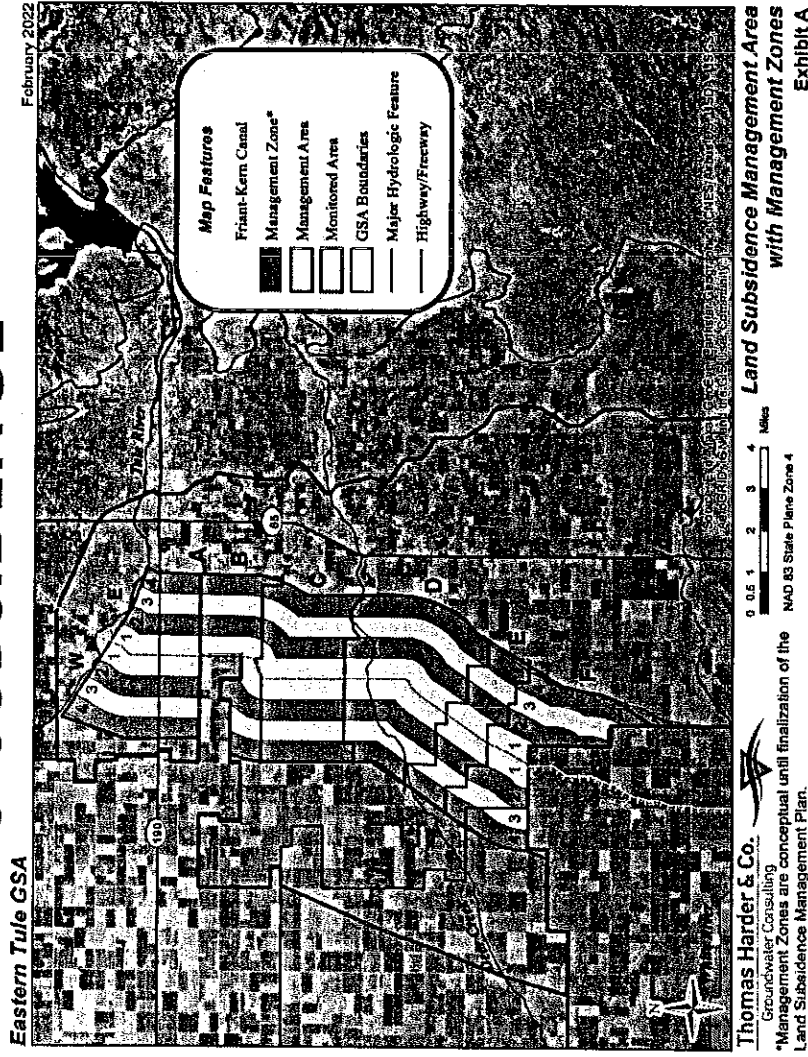


# TULE SUBBASIN'S APPROACH TO SUBSIDENCE

- Participating in settlement with Friant Water Authority
- UR is more than 3 ft of subsidence near FKC
- SMCs based on subsidence predicted by numeric groundwater flow model
- Yearly allocations that ramp down from current pumping to sustainable yield by 2035
- Land Subsidence Management and Monitoring Plan in place for Eastern Tule GSA and promised by Delano-Earlimart ID GSA and Lower Tule River ID GSA
- Management zones defined by position along and proximity to FKC
- Tiered reductions in allocations and limitations on water extractions and transfers implemented within management zones based on subsidence observed in the past year

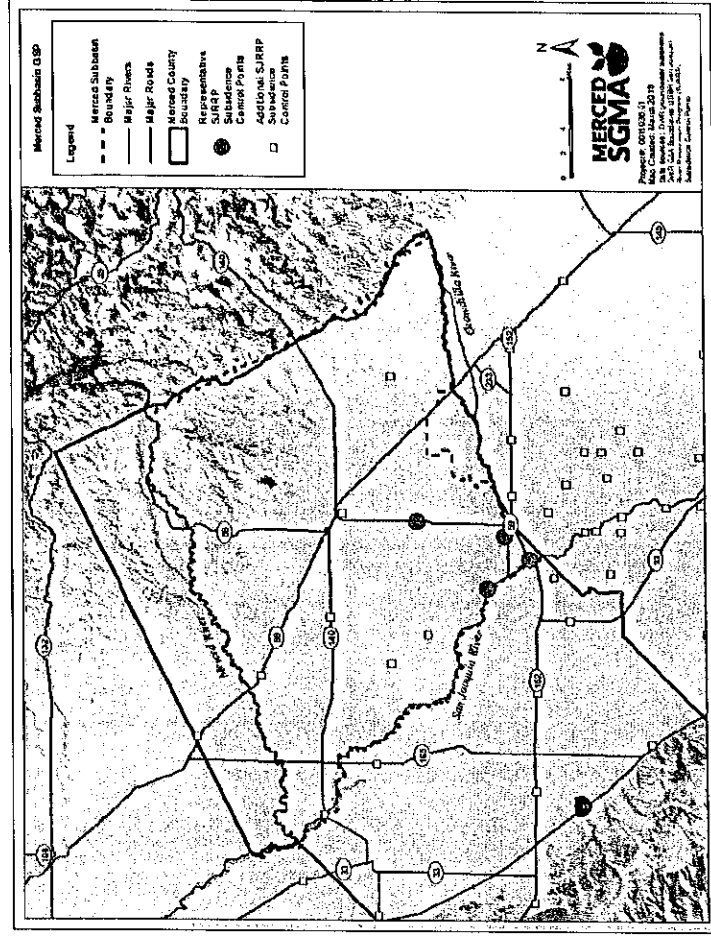
eki

88



# MERCED SUBBASIN'S APPROACH TO SUBSIDENCE

- UR could include reduced capacity in Eastside Bypass and damage to community infrastructure in El Nido
- MT is 0 ft/year subsidence (after 2040)
- P/MAs include
  - Groundwater allocations
  - Demand reduction programs
  - Streamlined permitting to replace Lower Aquifer wells with Upper Aquifer wells
  - In-Lieu recharge
  - Increased data collection



## UNDESIRABLE RESULTS – LAND SUBSIDENCE

Basin GSAs are committed to...

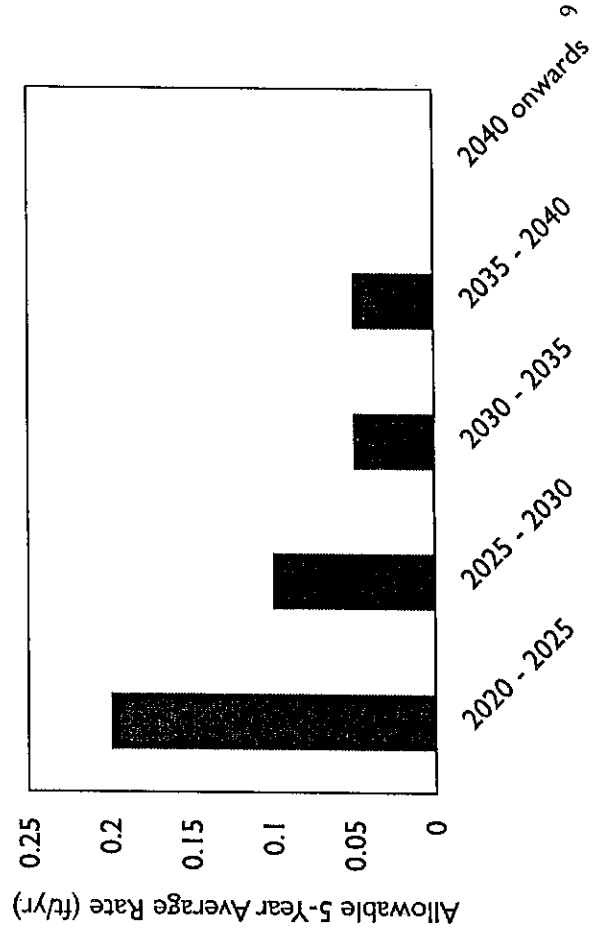
Avoiding significant and unreasonable land subsidence as a result of GW extraction (GSA management actions) within the Basin that exceeds protective design standards for critical infrastructure (i.e., Delta-Mendota Canal, California Aqueduct, and Chowchilla Bypass) that assume 2.0 feet of additional subsidence will occur by 2040.

eki



## REVISED SMCs

SMC	Extent	5-Year Average Rate
Minimum Threshold	≤2 ft. by 2040	0.2 ft/year
Measurable Objective	0 ft. after 2040	0 ft/year after 2040

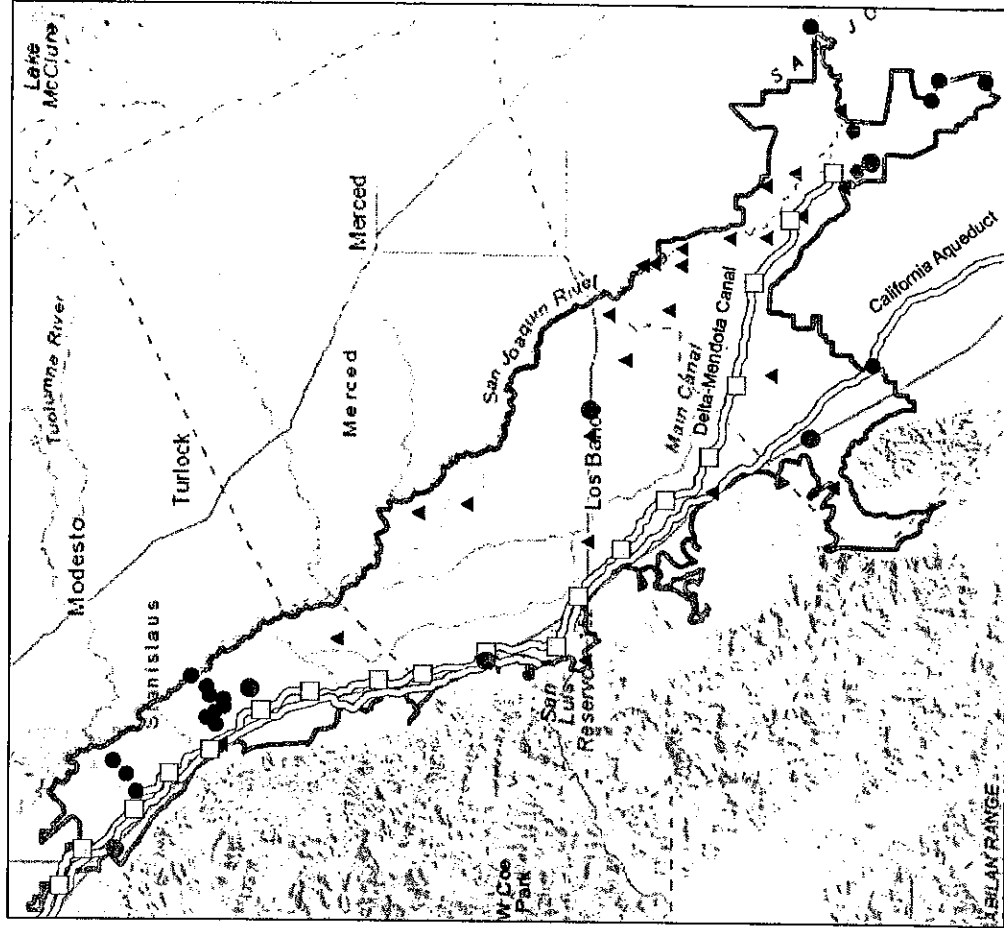


### Interim Milestones

Time interval	Subsidence (ft)	5-Year Average Rate (ft/year)
2020 – 2025	1	0.2
2025 – 2030	0.5	0.1
2030 – 2035	0.25	0.05
2035 – 2040	0.25	0.05
2040 onwards	0	0

eki

# EXISTING SUBSIDENCE MONITORING SITES

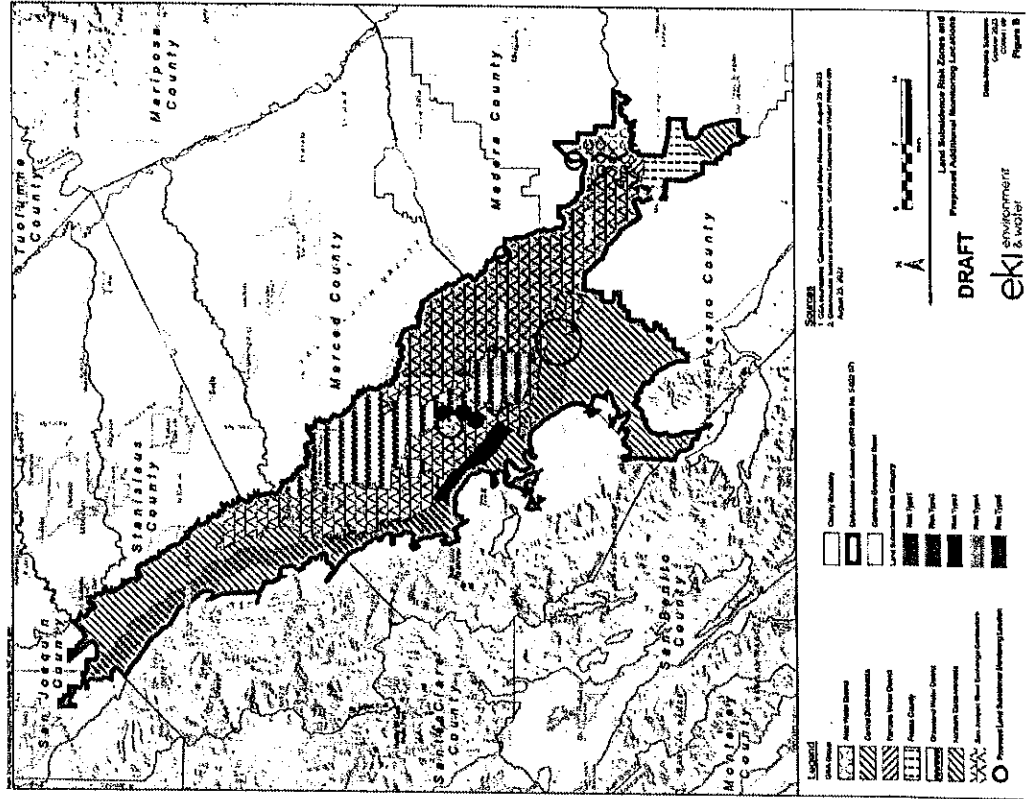


## Subsidence Monitoring Locations

- GSA Survey Points
- UNAVCO CGPS Sites
- Delta-Mendota Canal Checkpoints
- ⚙ USGS Extensometer
- ▲ San Joaquin River Restoration Program GPS Stations

# SUBSIDENCE PLAN PROVIDES POTENTIAL FRAMEWORK TO ACHIEVE SMCs

- Basin developed a **Conceptual Master Plan for Subsidence Monitoring and Management** in 2022
- Identified areas of potential subsidence risk and recommendations for monitoring and management





Risk category <sup>4</sup> (All GSA groups)

- Estimate GSA-level total pumping relative to projections. Evaluate for management if excessive extractions or subsidence observed
- Regularly re-evaluate water level MTs to determine if they are protective of subsidence.
- Cross-validate GPS stations with InSAR every 6 years

## Risk category 5 (NCDM &amp; SJREC)

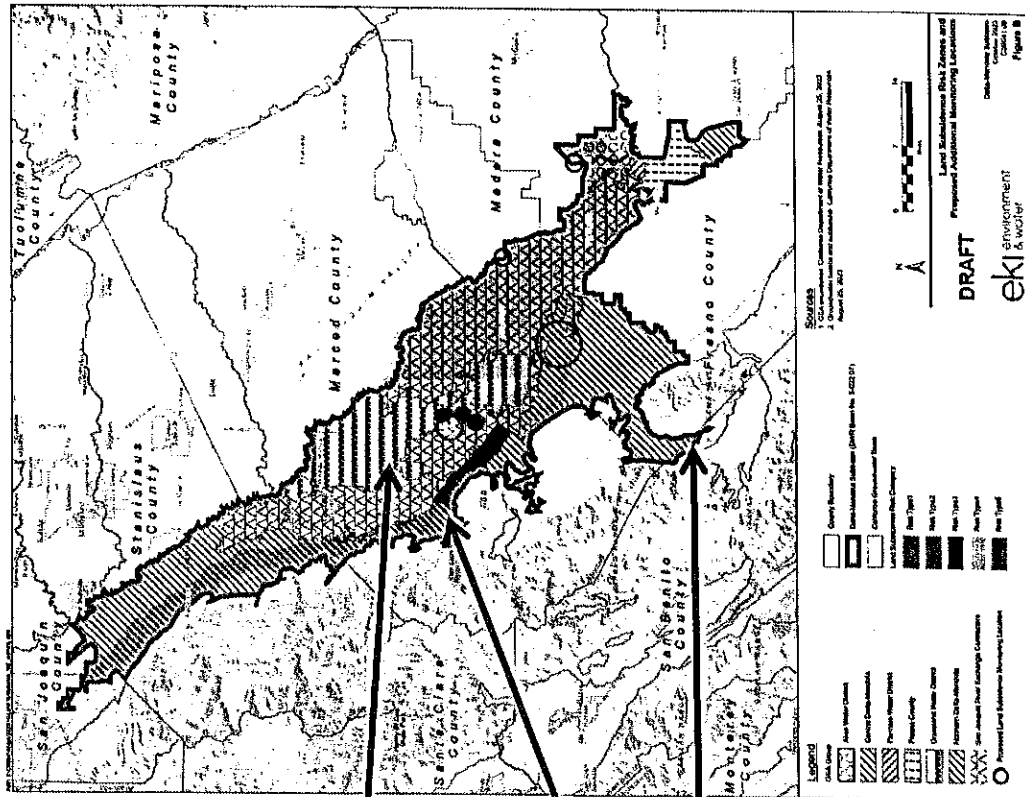
- Inventory wells if subsidence rates increase

## Risk category 6 areas (NCDM, SJREC, Grassland)

- Estimate extractions if subsidence rates increase**

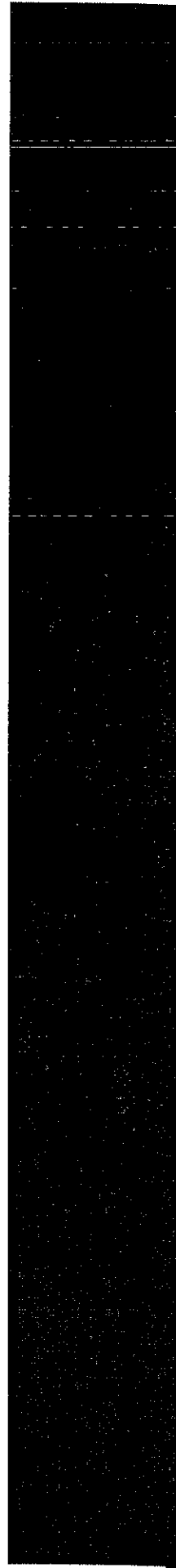
## Basin-wide

- Establish additional water level and subsidence monitoring sites
- Survey DMC and critical infrastructure every three years



## 10. PRESENTATION TO THE SWRCB

OCTOBER 11 2023



eki

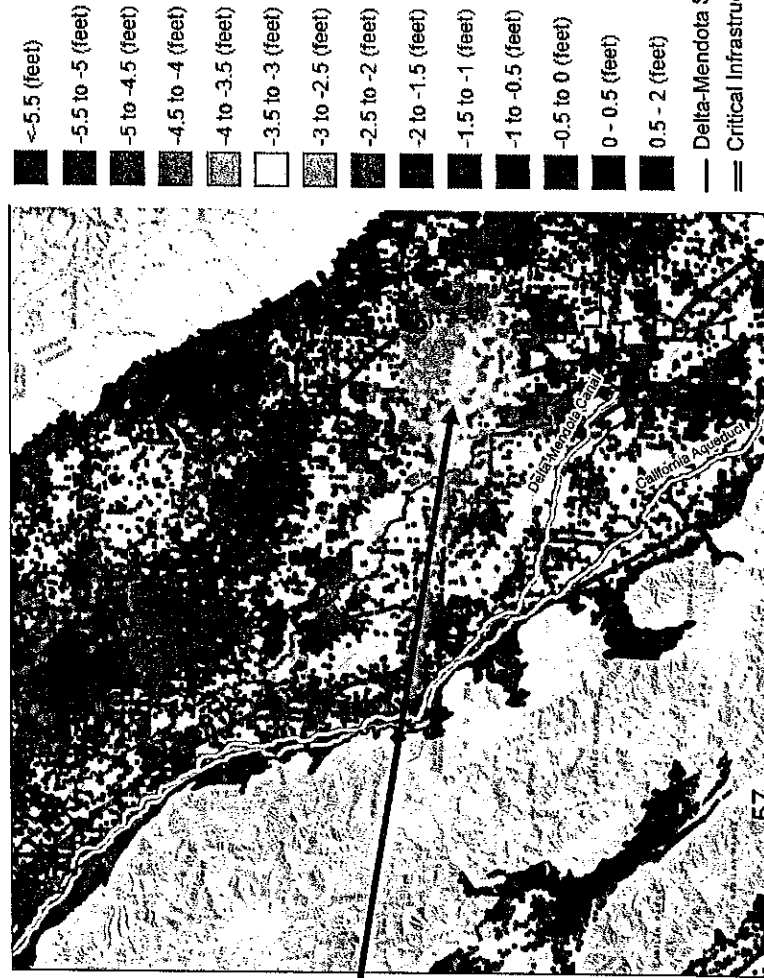
56

14

94

# INSAR DATA IDENTIFIES SUBSIDENCE HOTSPOT LOCATION OUTSIDE OF BASIN

- Subsidence hotspot is located OUTSIDE of the Delta-Mendota (DM) Subbasin and impacting conditions in the DM Subbasin.
- This issue is outside of DM GSA control



eki

97

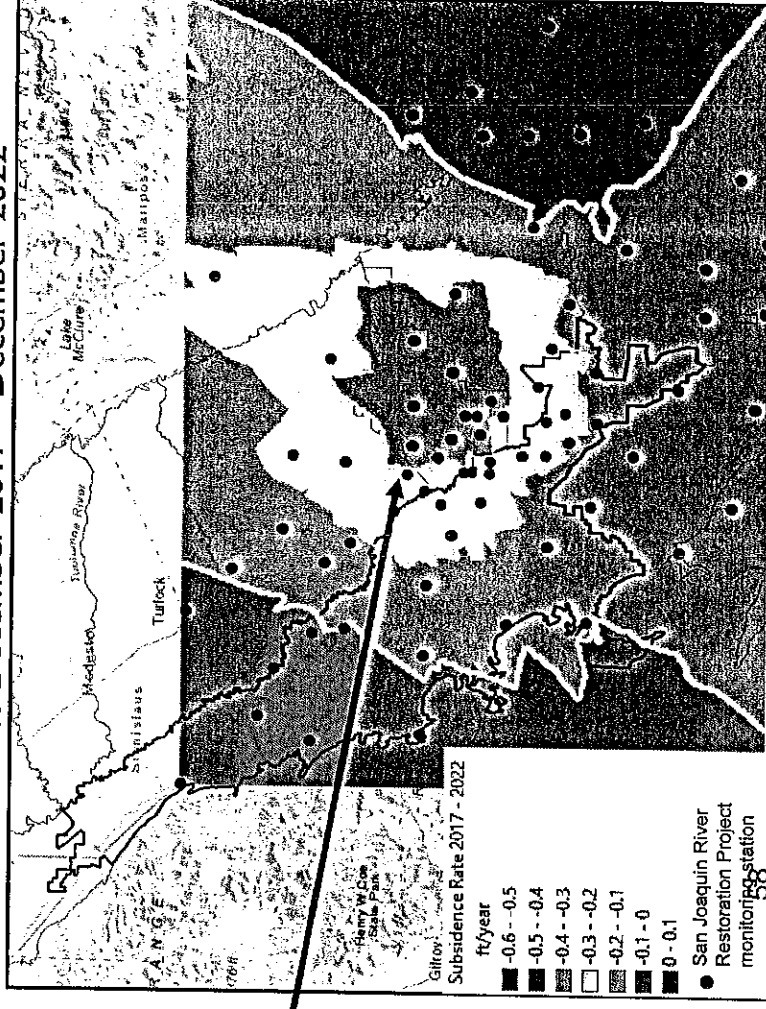
TRE Altamira InSAR



# USBR SURVEY DATA IDENTIFIES SUBSIDENCE HOTSPOT LOCATION OUTSIDE OF BASIN

- Subsidence hotspot is located OUTSIDE of the Delta-Mendota (DM) Subbasin and impacting conditions in the DM Subbasin.
- This issue is outside of DM GSA control

Subsidence Rates December 2017 – December 2022



eki

98

## **DWR DEFICIENCIES FOR SUBSIDENCE**

***Deficiency #2: “The GSPs have not established common definitions of undesirable results in the Subbasin”***

- (they) do not explain what are now considered to be significant and unreasonable conditions. For example, ... **no examples** of what are considered an unmitigated and unmanageable reduction of design capacity for conveyance structures are discussed.

***Planned GSP Revision:*** Revised definition of URs now clearly ties back to the design standards for the critical infrastructure that accounts for an additional 2 ft of subsidence by 2040

## DWR DEFICIENCIES FOR SUBSIDENCE

*Deficiency #3: “The GSPs in the Subbasin have not set sustainable management criteria in accordance with the GSP regulations”*

- GSP Regulations ... require the minimum threshold to be expressed as a **rate and extent** of subsidence and the new minimum threshold is only expressed as a total amount of subsidence.
- the Plan does not indicate when the **period for calculation a total of two feet of additional subsidence begins**

**Planned GSP Revision:** Revised definition of MTs to clarify both the rate and extent and to clarify the period of calculation for the 2.0 ft of additional subsidence

eki

60

18

100

# PROPOSED LAND SUBSIDENCE SMCS

## ■ Undesirable Results:

- UR occurs if MTs are exceeded at 25% or more of RMS as a result of groundwater extraction in the basin, based on a 5-year moving average.
- Critical Infrastructure includes the California Aqueduct, Delta-Mendota Canal, and Chowchilla Bypass.
- Significant and Unreasonable definitions tied to existing mitigation plans (i.e., DMC Subsidence Correction Project)

## ■ Minimum Thresholds:

- Set as 2 ft total (cumulative) subsidence between 2020 and 2040, maximum 5-year average rate of 0.2 feet per year

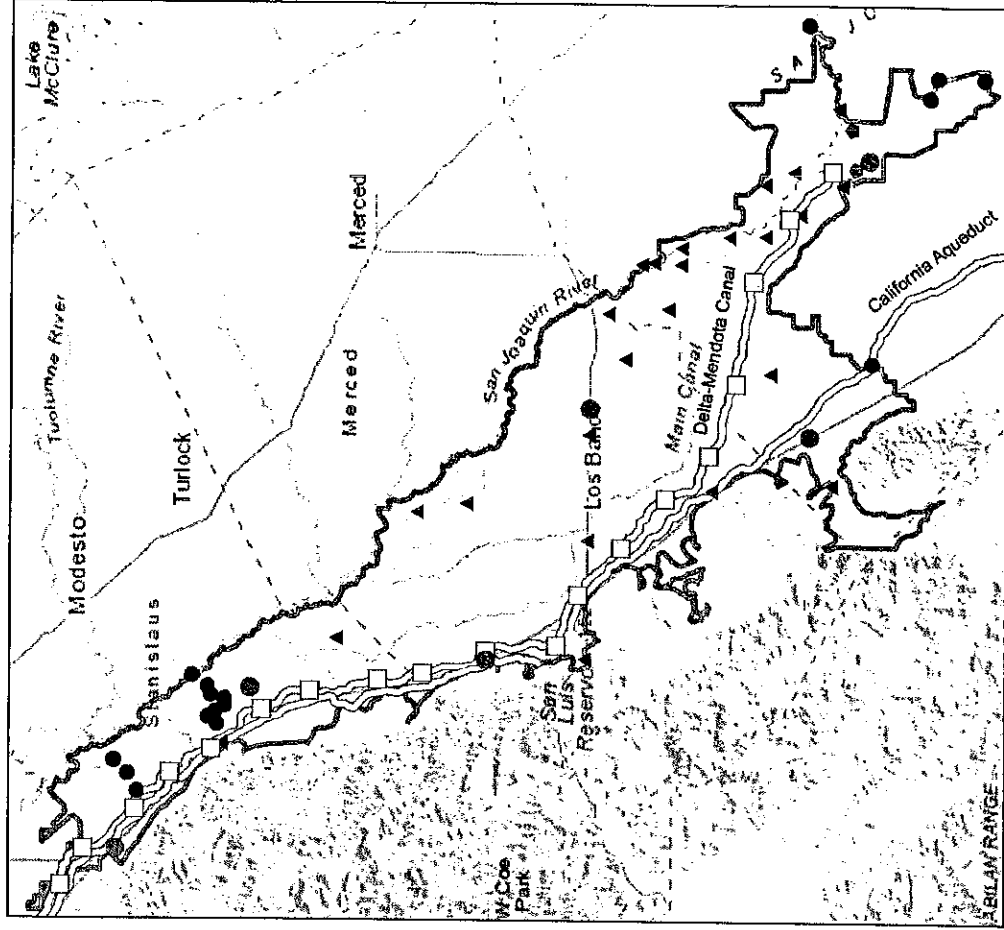
## ■ Interim Milestones:

- No more than 1.0 ft cumulative subsidence by 2025; 5-year average rate  $\leq 0.2$  ft/yr; starting point is 2020 (same as for MTs and all other IMs)
- No more than 1.5 ft cumulative subsidence by 2030; 5-year average rate  $\leq 0.1$  ft/yr
- No more than 1.75 ft cumulative subsidence by 2035; 5-year average rate  $\leq 0.05$  ft/yr
- No more than 2.0 ft cumulative subsidence by 2040; 5-year average rate  $\leq 0.05$  ft/yr

## ■ Measurable Objectives:

- No additional cumulative subsidence beyond 2040; 5-year average rate = 0 ft/yr

# EXISTING SUBSIDENCE MONITORING SITES



## Subsidence Monitoring Locations

- GSA Survey Points
- UNAVCO CGPS Sites
- Delta-Mendota Canal Checkpoints
- ◆ USGS Extensometer
- ▲ San Joaquin River Restoration Program GPS Stations

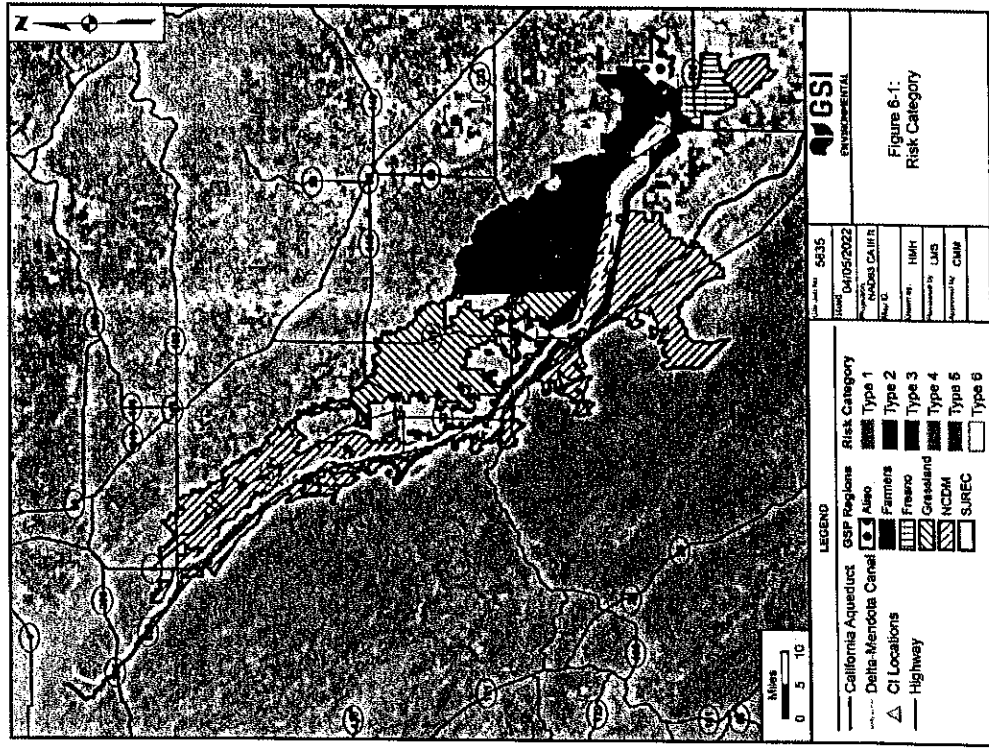
# GSAs ACTIVELY WORKING TO DEVELOP PROJECTS AND MANAGEMENT ACTIONS TO ADDRESS SUBSIDENCE

- Additional monitoring
- Consideration of pumping restrictions/allocations in areas with pumping-induced subsidence and critical infrastructure
- Additional groundwater recharge projects

eki

63

103



[REDACTED]

## 14. REQUEST FOR INFORMATION STATUS

[REDACTED]

eki

64

22

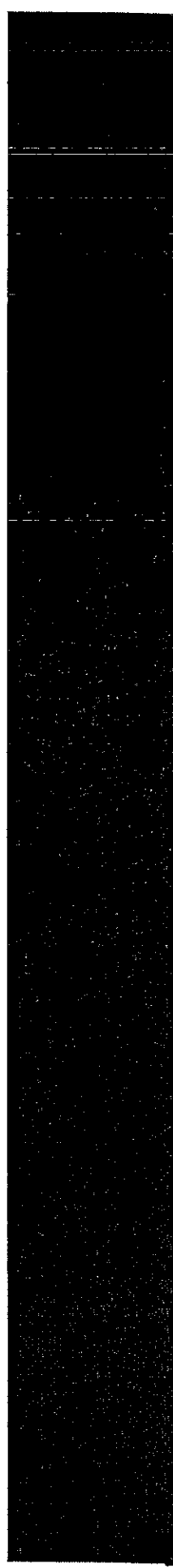


## RFI #1 TO #3 STATUS

- 2022 GSP Materials – received Common Chapter (CC) and map packages for selected CC Figures
- Data to support RMN – in progress, see Agenda item I5
- Received stakeholder engagement records from West Stanislaus ID, NCDM, Madera County, Patterson ID, Farmers WD
- Received land use data from Patterson ID, Farmers WD, Fresno County, NCDM
- Received water budget information from NCDM, Fresno County, Farmers WD, Madera County, SJREC, Aliso WD, Fresno County, Grasslands, WSID
- Not yet received

eki

## 15. REPRESENTATIVE MONITORING NETWORK REVISIONS



eki

66

24

106

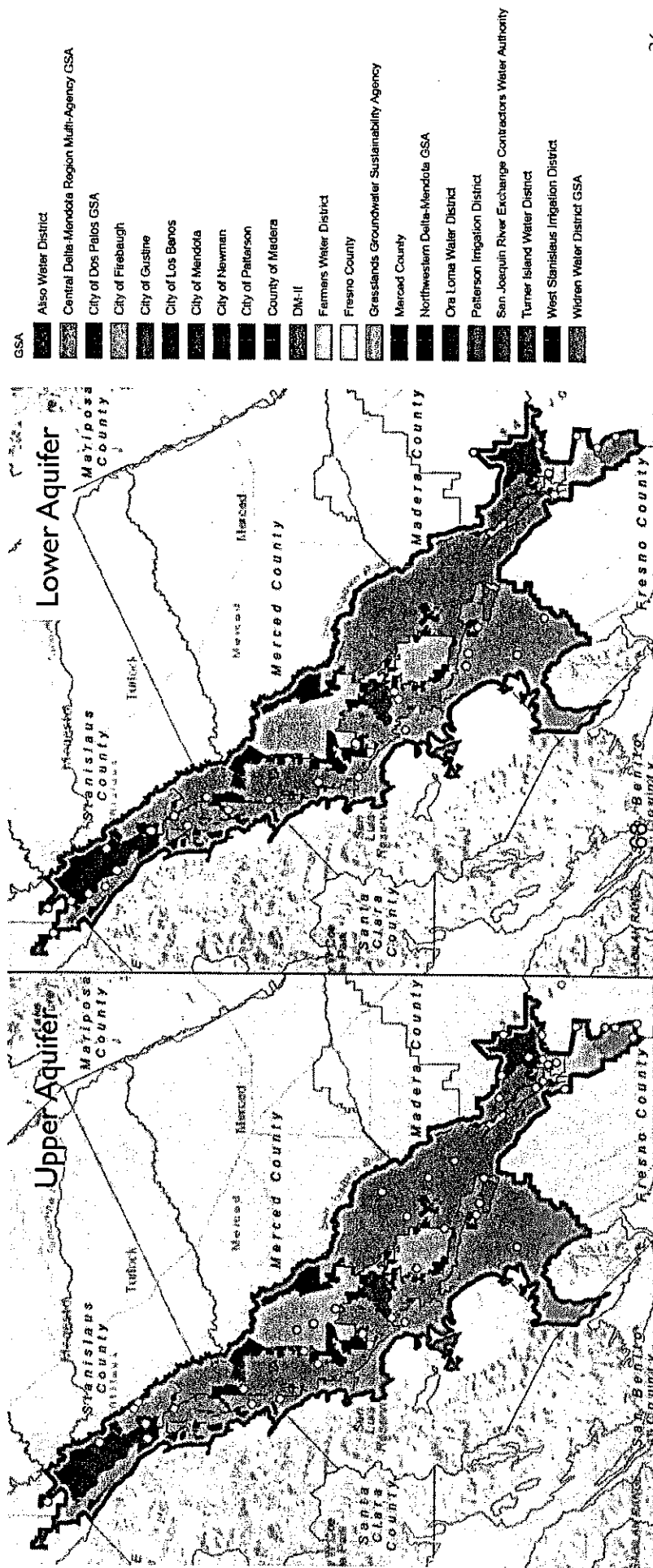
# RFI #1 – RMN REVISION

RMWs with confirmed coordinates and depths

GSA_Name	Upper RMW- WL Count	Lower RMW- WL Count	Upper RMW- WQ Count	Lower RMW- WQ Count
Central Delta-Mendota GSA	8	8	5	7
Aliso Water District GSA	4	4	4	2
Grasslands GSA	8	2	4	2
County of Merced GSA - Delta-Mendota	1	5	3	7
San Joaquin River Exchange Contractors GSA	9	3	9	3
County of Fresno GSA - Delta-Mendota Management Area B	4	1	11	1
County of Fresno GSA - Delta-Mendota Management Area A	1	0	1	0
City of Mendota	0	0	0	0
Oro Loma Water District GSA	1	0	1	0
Farmers Water District GSA	3	1	5	1
Patterson Irrigation District GSA	2	0	2	0
DM-II GSA	1	6	1	6
City of Patterson GSA	2	1	1	1
Northwestern Delta-Mendota GSA	2	1	1	1
West Stanislaus Irrigation District GSA	2	4	2	4
City of Los Banos	0	0	0	0
City of Dos Palos GSA	0	0	0	0
City of Firebaugh GSA	0	0	0	0
City of Gustine GSA	0	0	0	0
City of Newman GSA	0	0	0	0
County of Madera GSA - Delta-Mendota	0	0	0	0
Turner Island Water District GSA - Delta-Mendota	0	0	0	0
Widren Water District GSA	1	0	1	0

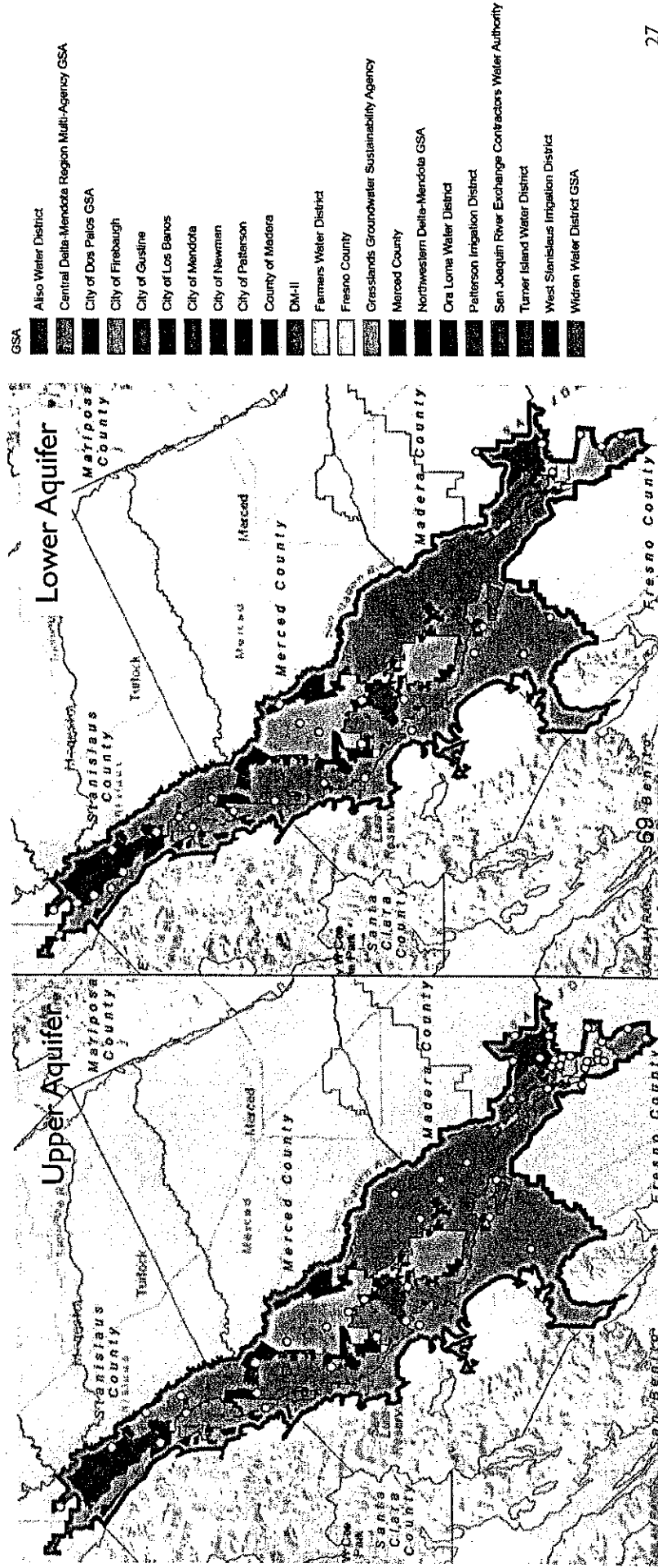
# RMN-WL REVISION (AS OF 10/6/23)

- 49 upper and 35 lower RMWs with confirmed coordinates mapped by GSA



# RMN-WQ REVISION (AS OF 10/6/23)

- 51 upper and 35 lower RMWs with confirmed coordinates mapped by GSA



[illegible]

*[The page contains extremely faint, illegible text, likely bleed-through from the reverse side.]*

70

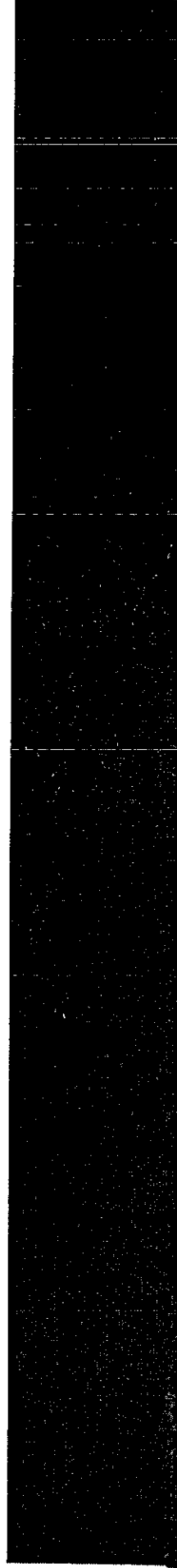
## THREE-MONTH LOOK AHEAD

- October / November 2023
  - SWRCB Meeting and basin tour 10/11/2013
  - RFI #3 responses due 10/27/23
  - Draft Introduction and Plan Area chapters provided for GSA review
  - MOA adoption
  - Potential SWRCB Meeting in November (TBD)
- December 2023
  - Draft Hydrogeologic Conceptual Model (HCM) and Groundwater Conditions (GWC) chapters provided for GSA review
  - Potential SWRCB Meeting in December (TBD)

eki

==

# POTENTIAL REVISED APPROACH TO WATER QUALITY SMCs



eki

72

30



# MAIN SWRCB STAFF CRITICISMS OF PROPOSED WQ APPROACH

- SMCs should be set for all COCs identified in 2022 letter
- MTs should not be set higher than MCLs
- Exceedance at 25% of wells for UR seems very high

State Water Board staff encourage DWR, GSAs, and other interested parties to consider the attached list of constituents derived from this methodology when evaluating or updating GSPs. While it may not be appropriate for a GSP to set minimum thresholds and measurable objectives for all constituents identified for the basin, most or all of the constituents should be discussed in the basin setting (Cal. Code Regs., tit. 23, § 354.14, subd. (b) (4) (D) and § 354.16, subd. (d)), since these constituents are present in the basin at concentrations that can impact beneficial users of groundwater.

eki

113

## TWGW RECOMMENDED REVISED WATER QUALITY APPROACH

- Monitor all SWRCB Constituent of Concern (COCs) in all RMW-VWQ wells annually, then gradually reduce monitoring frequency if data aren't changing / no relationship shown to GSA management
- Set MTs at Maximum Contaminant Levels (MCLs) for all SWRCB COCs
- Will have to create a more nuanced definition of Undesirable Results:
  - Focus only on impacts due to GSA management (extraction or recharge)
  - Wells with exceedances may be "Significant but not unreasonable"

eki

114

## COST ESTIMATES FOR WATER QUALITY ANALYSIS

- Analytical cost for SWRCB COCs per well is approximately \$420.
- Total sampling cost is TBD but would have to happen regardless of COC list.
- 1,2,3-TCP - \$100
- Arsenic - \$20 to \$27 (depends on method)
- Gross alpha radioactivity - \$110
- Nitrate as N - \$25
- Nitrate + nitrite - \$45
- Hexavalent chromium - \$90
- TDS - \$23
- Waste disposal fee (per Sample): \$2.50

eki

115

## DATA SOURCES AND TRENDS

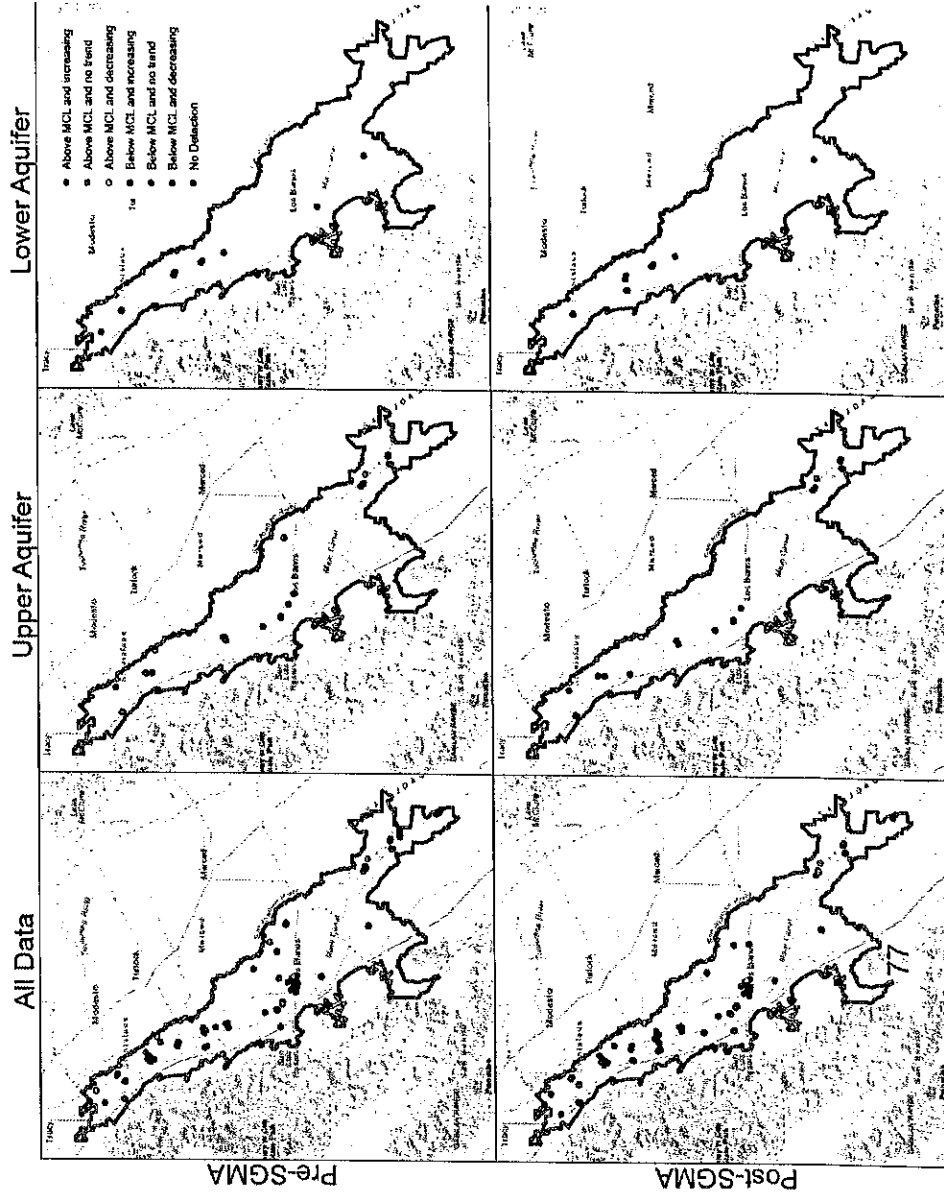
- Compiled data for the Basin from: GAMA, DMS\*
- Evaluated concentrations pre SGMA (2015) / post-SGMA

COCs	# Wells w/ Data		Detections Above MCL		Increasing Trends	
	Upper	Lower	Upper	Lower	Upper	Lower
I,2,3-TCP	197 / 149	16 / 11	14% / 17%	1% / 5%	1% / 3%	0% / 0%
Gross Alpha	31 / 24	10 / 10	0% / 0%	14% / 4%	0% / 0%	1% / 0%
Arsenic	243 / 104	22 / 10	26% / 28%	15% / 13%	0% / 0%	0% / 5%
Chrome (VI) <sup>†</sup>	190 / 79	16 / 6	46% / 91%	46% / 66%	4% / 27%	2% / 7%
Nitrate – N	289 / 205	29 / 30	30% / 47%	7% / 20%	5% / 14%	14% / 7%
Nitrate + Nitrite	44 / 59	8 / 1	63% / 30%	8% / 5%	7% / 2%	0% / 5%
TDS	270 / 220	29 / 34	62% / 63%	52% / 47%	5% / 7%	0% / 3%

76

116

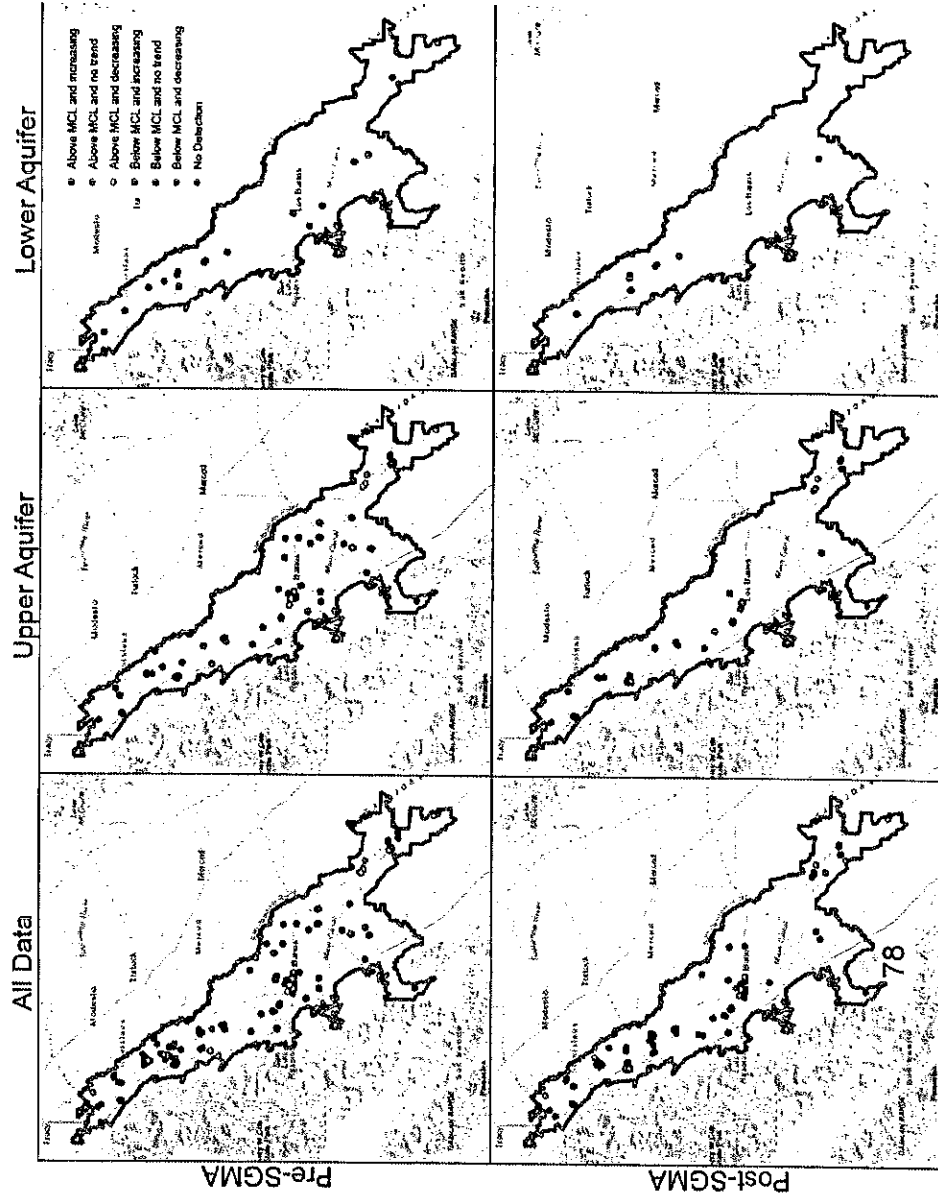
# GROSS ALPHA ACTIVITY



	Upper	Lower	All
# Wells	31 / 24	10 / 10	41 / 34
> MCL	0% / 0%	14% / 4%	3% / 1%
+ Trend	0% / 0%	1% / 0%	0% / 0%

# ARSENIC

	Upper	Lower	All
# Wells	243 / 104	22 / 10	265 / 114
> MCL	26% / 28%	15% / 13%	25% / 27%
+ Trend	0% / 0%	0% / 5%	0% / 0%



eki

118

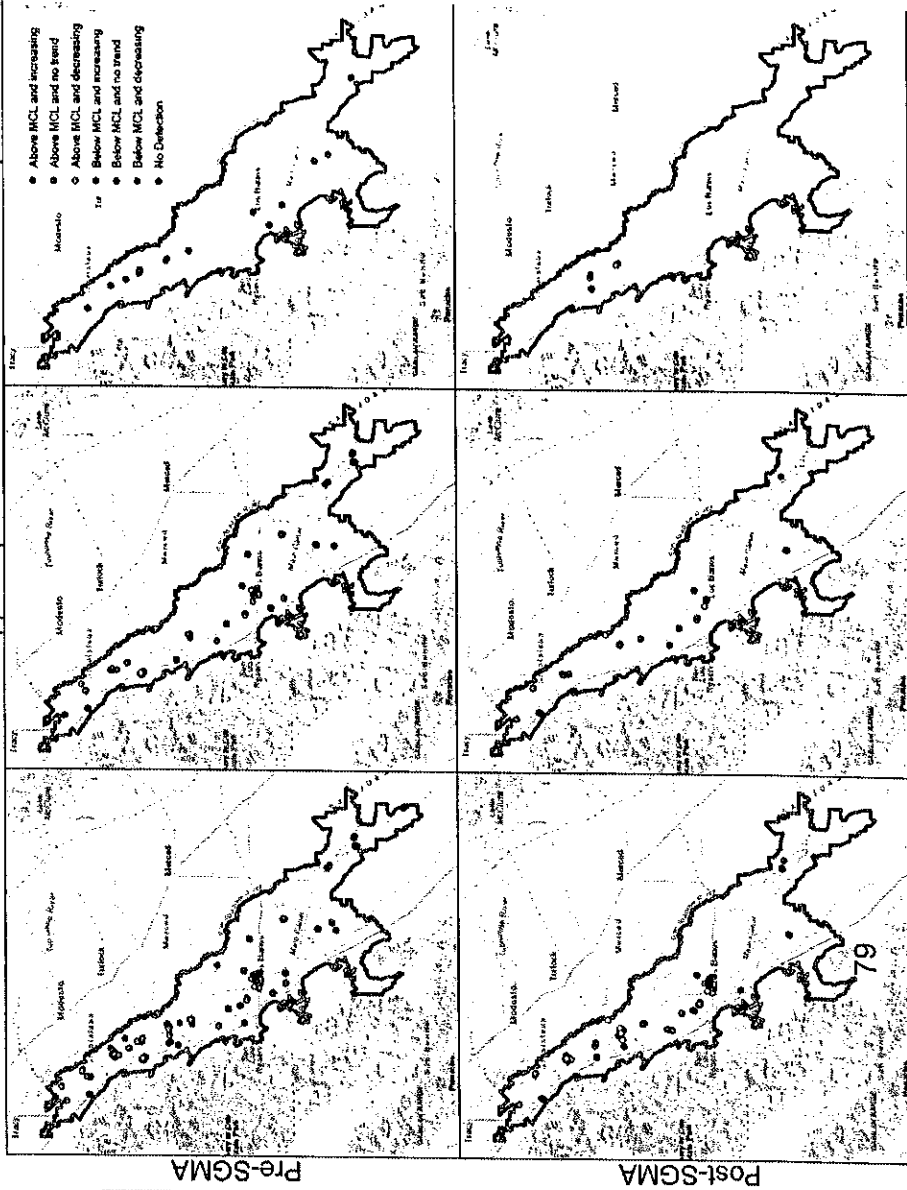
# HEXAVALENT CHROMIUM

All Data

Lower Aquifer

Upper Aquifer

	Upper	Lower	All
# Wells	190 / 79	116 / 8	206 / 85
> MCL	46% / 91%	46% / 66%	46% / 89%
+ Trend	4% / 27%	2% / 7%	4% / 25%

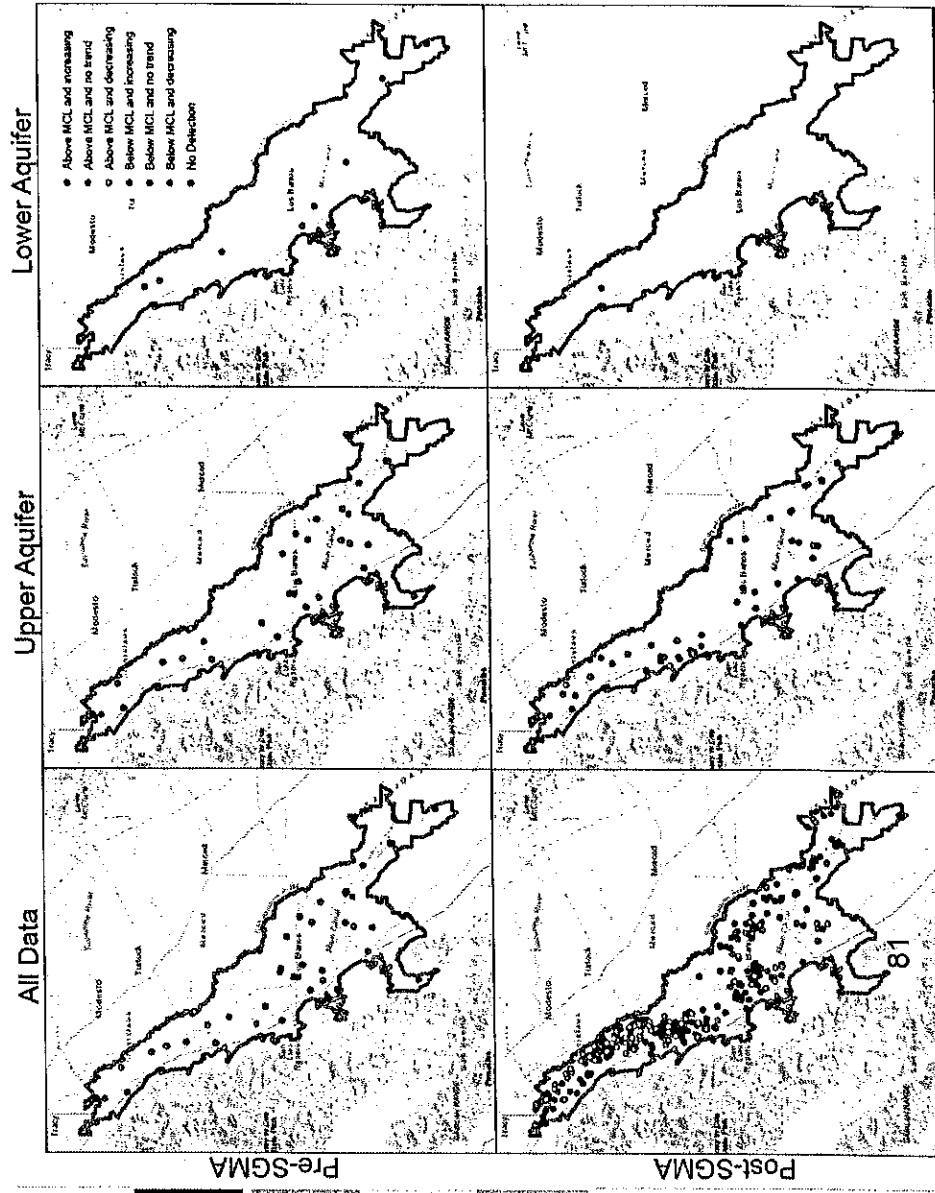






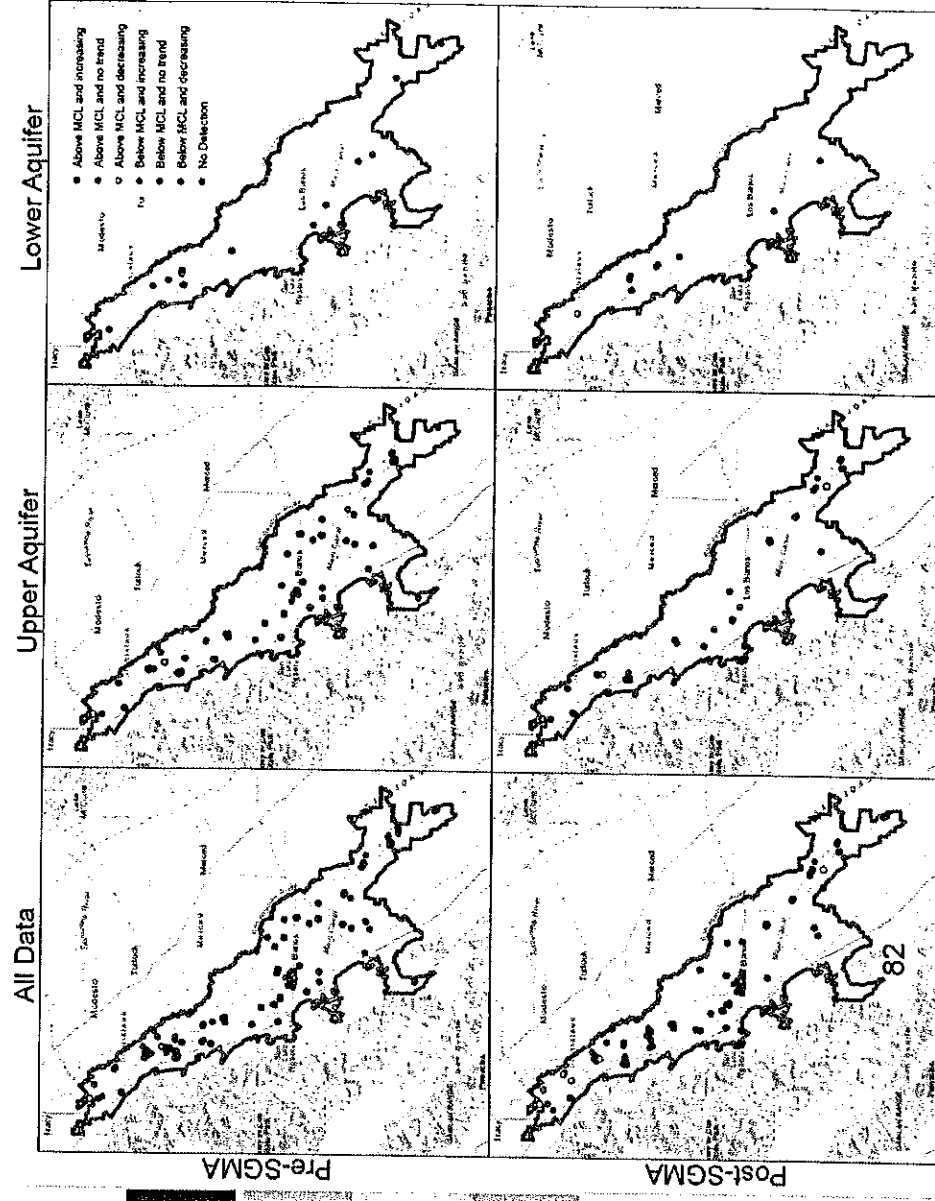
# NITRATE + NITRITE

	Upper	Lower	All
# Wells	44 / 59	8 / 11	52 / 60
> MCL	63% / 30%	8% / 5%	55% / 29%
+ Trend	7% / 2%	0% / 5%	6% / 2%



# 1,2,3-TCP

	Upper	Lower	All
# Wells	197 / 149	16 / 11	213 / 160
> MCL	14% / 17%	1% / 5%	13% / 16%
+ Trend	1% / 3%	0% / 0%	1% / 3%

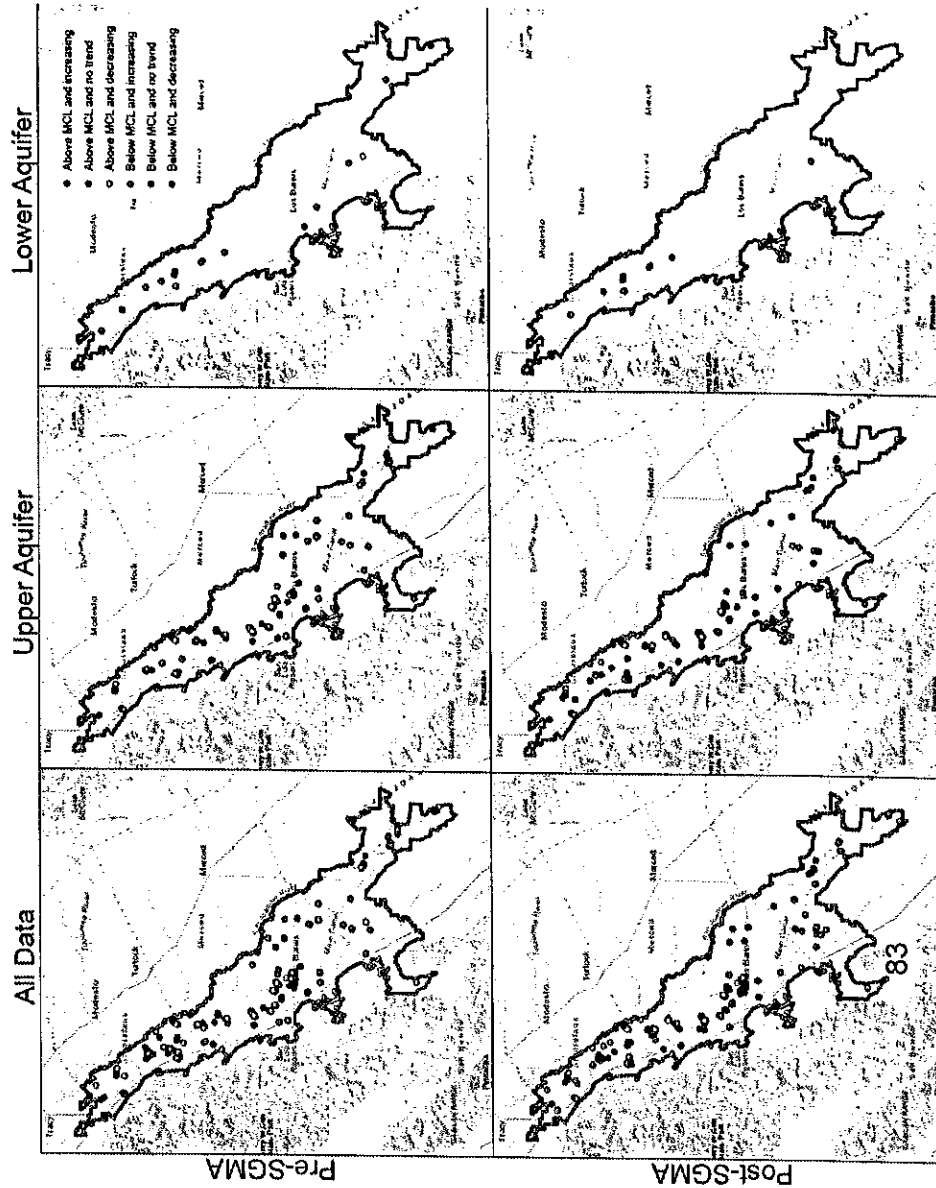


eki

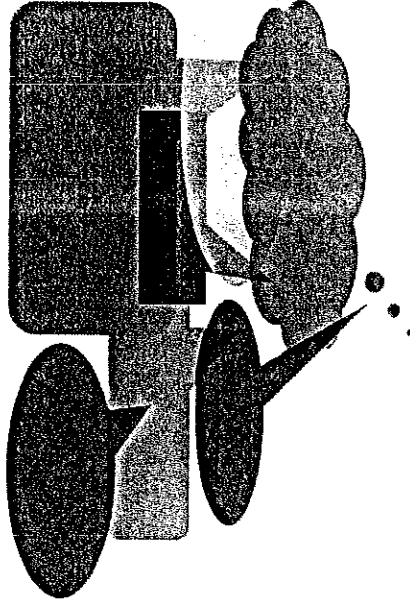
122

# TDS

	Upper	Lower	All
# Wells	270 / 220	29 / 34	299 / 254
> MCL	62% / 63%	52% / 47%	61% / 61%
+ Trend	3% / 7%	0% / 3%	3% / 7%



# QUESTIONS



eki

Representative Groundwater Level Network  
Northern and Central Delta-Mendota Regions

DMS ID	Local ID	Aquifer	Responsible Monitoring Entity	Comments
01-001	MP030.43R	Lower	Del Puerto WD	
01-002	MP033.71L	Lower	Del Puerto WD	Noted during 2022 GWQ sampling event that well destroyed but spring 2023 GWLs collected
01-003	MP045.78R	Lower	Del Puerto WD	
01-004	MC10-2	Upper	Del Puerto WD	
01-005	MP058.28L	Upper	Del Puerto WD	
01-006	91	Lower	Del Puerto WD	
01-007	MP021.12L	Lower	Del Puerto WD	
01-008	MP051.66L	Lower	Del Puerto WD	
02-002	WELL 02 - NORTH 5TH ST	Lower	City of Patterson	
02-009	Keystone well	Upper	City of Patterson	
03-001	MW-2	Upper	Patterson ID	
03-002	MW-3	Upper	Patterson ID	
03-003	WSJ003	Upper	Patterson ID	Poplar well
04-001	121	Lower	West Stanislaus ID	
04-006	Grayson Well 274	Upper	West Stanislaus ID	New this year as part of single GSP
04-007	Grayson Well 274A	Lower	West Stanislaus ID	New this year as part of single GSP
04-008	ARRA 28	Lower	West Stanislaus ID	New this year as part of single GSP
06-001	P259-1	Lower	Stanislaus County	
06-002	P259-3	Upper	Stanislaus County	
07-002	MC15-1	Lower	San Luis WD	
07-003	MC15-2	Upper	San Luis WD	
07-005	MP091.68R	Lower	Pacheco WD	
07-007	MC18-1	Lower	Panoche WD	
07-009	KRCDDTD03	Upper	Tranquility ID	
07-010	KRCDDTD02	Upper	Tranquility ID	
07-014	TW-4	Lower	Tranquility ID	
07-015	TW-5	Lower	Tranquility ID	
07-016	Well 01	Lower	Santa Nella County WD	
07-017	Well 1	Upper	SLDMWA	
07-018	WSJ001	Upper	Tranquility ID	
07-028	MP093.27L (Well 500)	Lower	Eagle Field WD	
07-031	CDMGSA-01C	Lower	San Luis WD	
07-032	CDMGSA-01D	Lower	San Luis WD	
07-033	TW-4 (upper component)	Upper	Tranquility ID	New this year as part of single GSP
07-035	MP098.74L	Upper	Panoche WD	
07-036	PWD Well 20	Lower	Panoche WD	New this year as part of single GSP
08-002	Well M-1/MP102.04L	Upper	Widren WD	

Blank

VIII D.

October 16, 2023

Department of Water Resources  
Maria Jochimsen  
Division of Regional Assistance  
P.O. Box 942836 Sacramento, CA 94236-001

**Subject:** Sustainable Groundwater Management Act  
Implementation Agreement No. 4600014644  
Changes to Invoice 1

Dear Maria,

There were various errors found in the Invoice 1 Submittal. The original reimbursement request was for \$377,523.79, however, after review, it was found that there was an overbilling of \$30,291.02. Therefore, the invoice total should have been \$347,232.77. After further discussion with DWR, it was decided that DPWD would hold the over-charges in their non-interest bearing account and will offset that with charges from the appropriate component and category in subsequent submittals. The following changes were made to the Invoice 1 Submittal:

**Component 9 Changes**

1. \$44,701.87 under Component 9, Category E should have been classified as Component 9, Category B.
2. There was a correction of a rate increase that was implemented in March 2022 but wasn't reflected in the calculations until July 2022. Originally, 40 hours of John's time were submitted under the hourly rate of \$93.95 when it should have been 34 hours.
3. John Brodie's expenses are considered subbasin-wide expenses, which are to be divided evenly among the GSP Groups. Since Northern & Central Delta-Mendota GSP Group opted to fund these expenses using a different source, the grant reimbursement is to be divided among the five remaining GSP Groups. Therefore, the reimbursement for each GSP Group is  $(\$19,322.91/6)*5$ , which with rounding per GSP group amounts to a total of \$16,102.45. Previously, \$19,886.61 was submitted for reimbursement as part of the subbasin-wide expenses, which resulted in an overbilling of \$3,784.16.
4. After shifting the \$44,701.87 from Category E to Category B and subtracting the \$3,784.16, the new total Component 9, Category B is \$249,687.70. Invoices that add up to \$3,784.16 under Component 9, Category B will be collected from the correct GSP participants and submitted to DWR but will be reimbursed by the grant funds held by Del Puerto from the overcollection on the invoice 1 submittal. This will be reflected in the revisions for Invoice 2. **A total of \$249,687.70 is to be reimbursed to the GSAs under Component 9, Category B.**

**Component 10 Changes**

1. The Woodard & Curran invoice 202597 for \$651.00 was originally submitted as \$651.50, which resulted in an overbilling of \$0.50. This invoice is considered part of the subbasin-wide expenses.
2. Since Northern & Central Delta-Mendota GSP Group opted to fund these expenses using a different source and the Aliso WD GSA does not have budget under Component 10, the grant reimbursement for the subbasin-wide expenses is to be divided among the four remaining GSP Groups. Therefore, the reimbursement for each GSP Group is broken out in the following way:
  - a. The total Baker Manock & Jensen invoices amount to \$17,691.50;  $(\$17,691.50/6)*4 = \$11,794.33$ . To make the cents divisible by four, \$0.01 was subtracted for a total of \$11,794.32.
  - b. The total EKI Environment & Water invoices amount to \$13,803.92;  $(\$13,803.92/6)*4 = \$9,202.61$ . To make the cents divisible by four, \$0.01 was subtracted for a total of \$9,202.60.

124

- c. The total Woodard & Curran invoices amount to \$48,023.50;  $(\$48,023.50/6)*4 = \$32,015.67$ . To make the cents divisible by four, \$0.03 was subtracted for a total of \$32,015.64.
- d. The total subbasin-wide expense to be reimbursed is \$53,012.56.
- 3. Previously, \$79,519.42 (made up of Baker Manock & Jensen, EKI Environment & Water, and Woodard & Curran invoices) was submitted for reimbursement as part of the subbasin-wide expenses, which resulted in an overbilling of \$26,506.86 for Component 10, Category E.
- 4. After subtracting the \$26,506.86 that was overbilled, the new total for Component 10, Category E is \$79,577.17. Invoices that add up to \$26,506.86 under Component 10, Category E will be collected from the correct GSP participants and submitted to DWR but will be reimbursed by the grant funds held by Del Puerto from the overcollection on the invoice 1 submittal. This will be reflected in the revisions for Invoices 2 and 3. **A total of \$79,577.17 is to be reimbursed to the GSAs under Component 10, Category E.**

**The new total for Invoice 1 to be reimbursed is \$347,232.77.**

Thank you for your patience with the reconciliation of the Invoice 1 Submittal errors.

Sincerely,



Del Puerto Water District



**Summary Table**  
Invoice 1 (2022Q3)

Component Name/Number	Page	Total this Invoice	Total from Original	Variance (Credit)
Component 1 – Los Banos Creek Recharge and Recovery	2	\$ -	\$ -	\$ -
Component 2 - Flood Water Capture	4	\$ -	\$ -	\$ -
Component 3 - Chowchilla Bypass Recharge	6	\$ -	\$ -	\$ -
Component 4 – Lateral 4N Reservoir Recapture and Recirculation	8	\$ -	\$ -	\$ -
Component 5 – North Valley Regional Recycled Water	10	\$ -	\$ -	\$ -
Component 6 – Farmers Water District Water Bank	12	\$ 17,967.90	\$ 17,967.90	\$ -
Component 7 – Los Banos Creek Detention Reservoir Regulation and Storage	33	\$ -	\$ -	\$ -
Component 8 – Data Gaps and Monitoring	35	\$ -	\$ -	\$ -
Component 9 – GSP Revisions, Updates, and Modifications	37	\$ 249,687.70	\$ 253,471.86	\$ (3,784.16)
Component 10 - Outreach and Education	161	\$ 79,577.17	\$ 106,084.03	\$ (26,506.86)
Component 11 – Studies and Investigations	218	\$ -	\$ -	\$ -
<b>Total</b>		<b>\$ 347,232.77</b>	<b>\$ 377,523.79</b>	<b>\$ (30,291.02)</b>

\$44,701.87 under Component 9, Category E should have been classified as Component 9, Category B. After shifting the \$44,701.87 from Category E to Category B and subtracting the \$3,784.16, the new total Component 9, Category B is \$249,687.70. In addition \$106,084.03 was charged to Component 10, Category E when it should have been \$79,577.17. \$3,748.16 will remain in the Component 9, Category B budget and \$26,506.86 will remain in the Component 10, Category E budget for future reimbursements, which will be reflected in Invoice 2.

Blank

## Well Registrations Not Yet Received

NILL. E.

Name
Borges, Frank J.
Borges & Machado
Tatla, Jasbir
Tatla & Singh

Blank

VIII F

<b>DEL PUERTO WATER DISTRICT</b> <b>STAFF REPORT</b>	<b>DATE OF MEETING:</b> October 18, 2023
---	---

October 18, 2023

**TO:** Board of Directors  
**FROM:** Adam Scheuber, Deputy General Manager - Water Resources  
**SUBJECT:** Groundwater Well Telemetry Grant Program

**DESCRIPTION:**

In April 2022 the District applied for a WaterSMART Small Scale Water Efficiency Grant to install up to 45 flowmeters and telemetry systems on groundwater wells throughout the District. On January 5, 2023 the Bureau of Reclamation put out a press release listing the District grant application as one of the selected projects for funding. On August 2, 2023 the District received the agreement for the Grant and will move forward with the environmental work and equipment acquisition. On October 11, 2023, the District received the revised cost estimate for the site equipment and installation.

**FUNDING:**

Project received a \$99,750 50% match WaterSMART Grant.

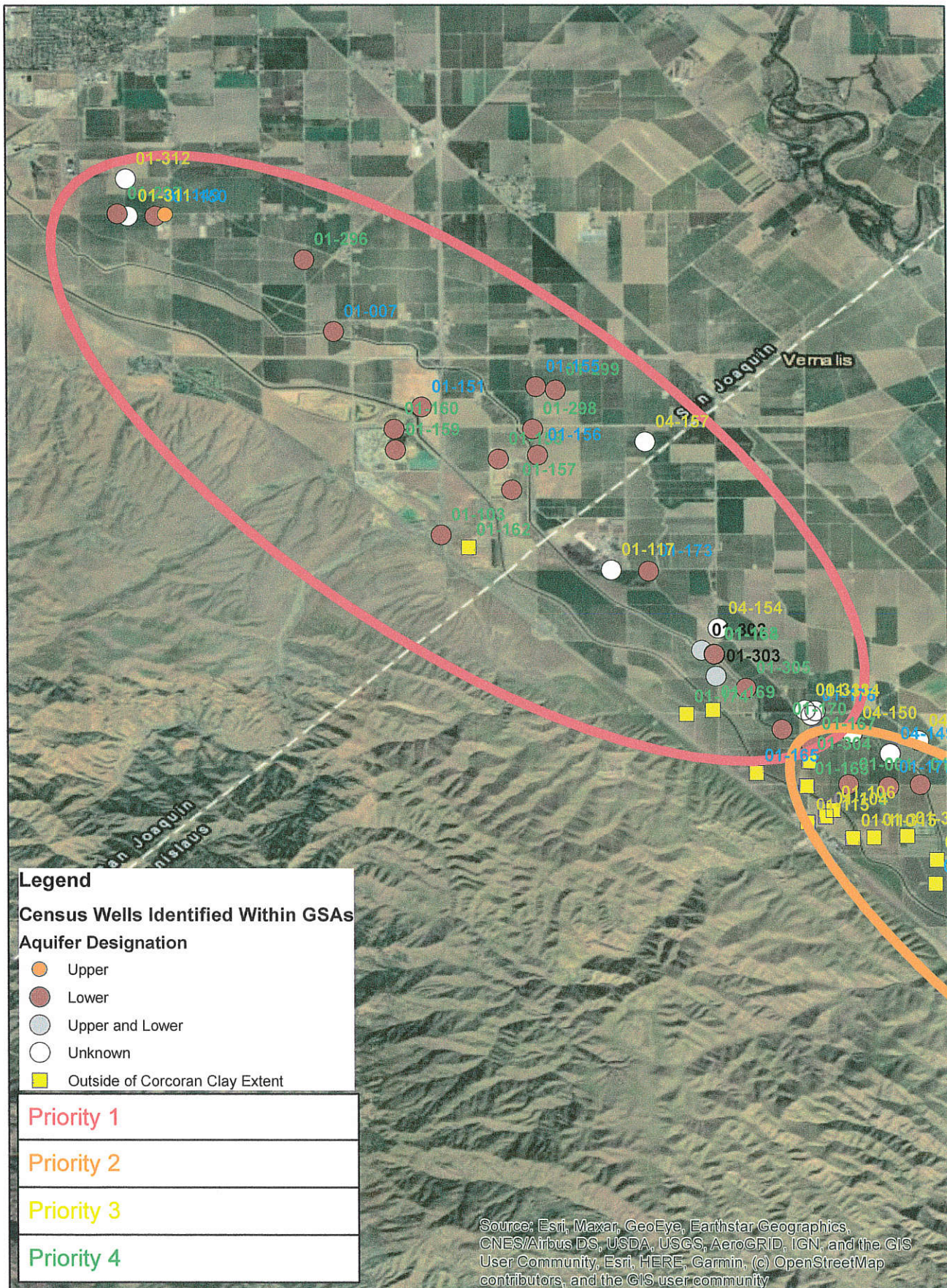
**UPDATE:**

Per previous Board guidance, staff has developed a priority list of wells targeting the areas under the most scrutiny for impacts to subsidence along critical infrastructure for inclusion in this program. The District selected 4 priority zones based on the results of USBR's subsidence surveys and planned subsidence correction projects. Maps of the priority wells are included with this report. Staff will take this priority list and compare the wells included in this list with the data received from the well registration forms to determine how many wells need new/upgraded meters and how many can be upgraded using the digital conversion kits from McCrometer the District has used previously. Meter upgrade costs will be split between the grant funding and the customers. The cost estimates provided by Sierra Controls include the costs to upgrade the customer and District side of the software, perform signal surveys of the selected sites, and provide materials and programming for regular antenna sites and sites that need external antennas. Staff will take this data and begin reaching out to customers to schedule meter upgrades and perform site installations once USBR completes the NEPA portion of the environmental requirements.

Blank



# Remote Telemetry Priority Maps

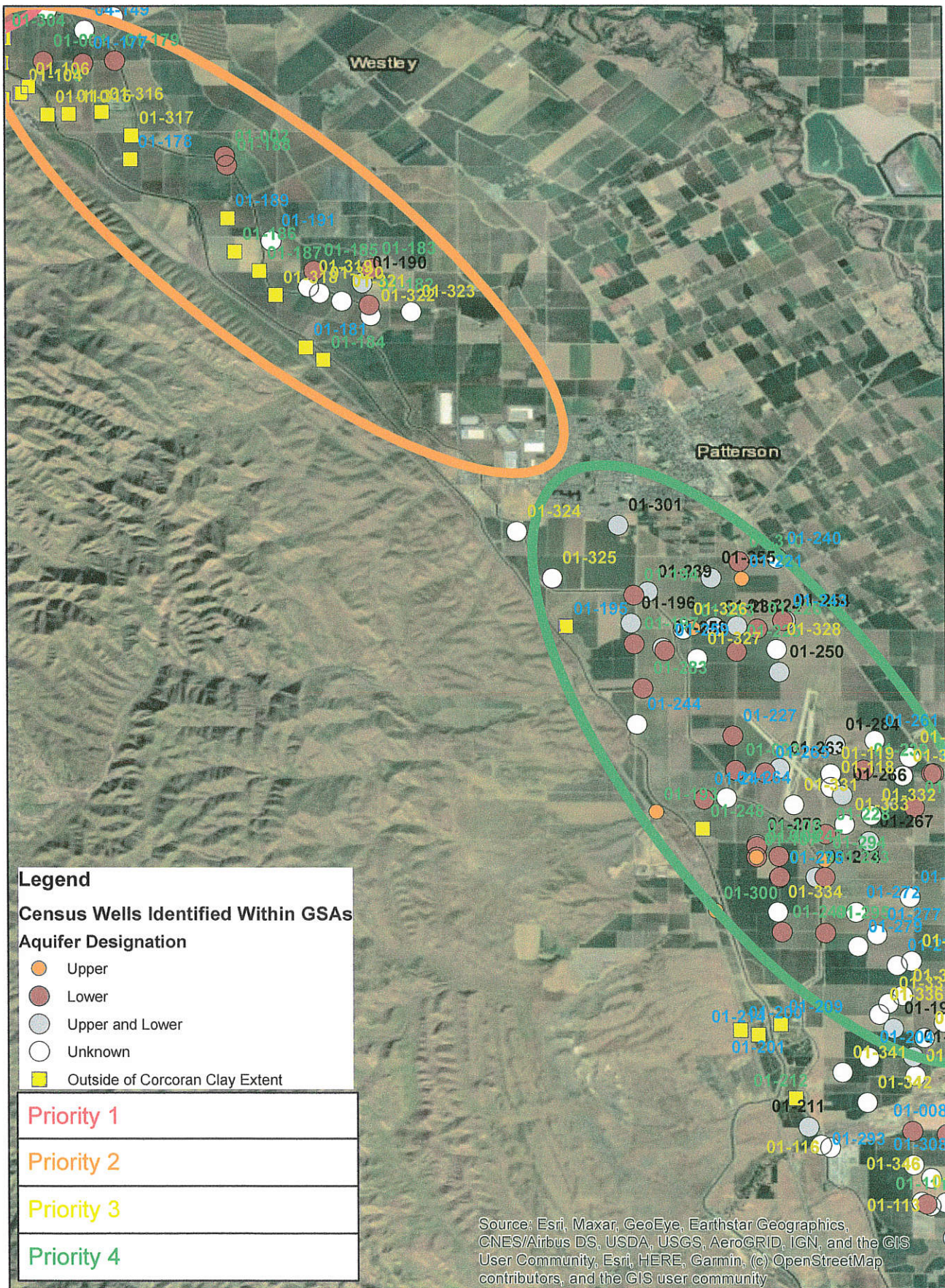








# Remote Telemetry Priority Maps

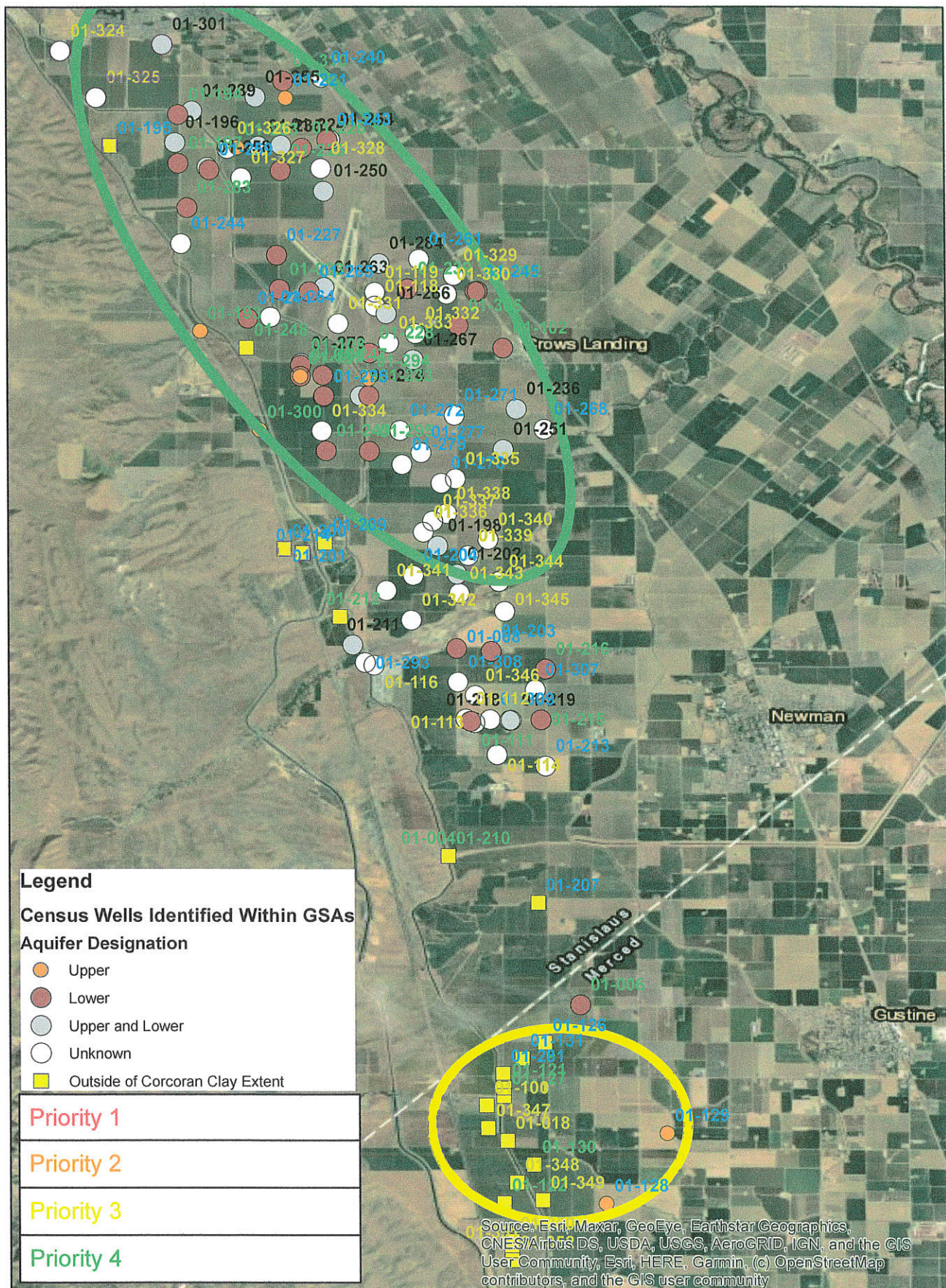








# Remote Telemetry Priority Maps









## Budgetary Figures

Sierra Controls, LLC

5470 Louie Lane Ste. 104

Reno, NV 89511

(775) 236-3350

Quote / Project #: 22-6655

Date: 10/11/2023

Project Manager: Mark Crossett

Est. Start Date: TBD

To: Del Puerto Water District

Attention: Adam Schueber

Project: Well Monitoring Project

Sierra Controls LLC (SC) is pleased to provide this proposal for Del Puerto Water District in support of the Well Monitoring Project.

These budgetary figures provide pricing for two types of sites, sites that have an internal antenna, and sites that have an external antenna. A site survey will determine which sites need to have an external antenna to establish a good communication link and which sites establish adequate communication links with the internal antenna.

The intent is to give the district the ability to multiply the types of sites by the per site and to inform SC as to the quantity of sites that are to be included in this phase. When SC has received this information SC will provide a firm proposal with the scope as defined by the district.

Item #	Description	Quantity	Unit Price	Est. Tax	Line Total
Item 1	<b>Materials - Internal Antenna</b> Pricing Includes: (1) SignalFire Ranger: Internal Antenna, Battery, 3-Year Verizon (1) Antenna Mast Hardware  Pricing also Includes: HMI Development	1	\$ 2,455.00	\$ 115.86	\$ 2,570.86
Item 2	<b>Installation - Internal Antenna</b> Pricing also Includes: Travel, Installation	1	\$ 3,060.00	\$ -	\$ 3,060.00
Per Site Total:			Price	Est. Tax	Total Price
			\$ 5,515.00	\$ 115.86	\$ 5,630.86
Item 3	<b>Materials - External Antenna</b> Pricing Includes: (1) Antenna Mast Hardware (1) SignalFire Ranger: External Antenna, Battery, 3-Year Verizon (1) CABLE N MALE TO SMA MALE 40 IN (1) DIRECTIONAL CELLULAR ANTENNA  Pricing also Includes: HMI Development	1	\$ 2,685.00	\$ 126.71	\$ 2,811.71

134





Item 4	Installation - External Antenna	1	\$ 3,690.00	\$ -	\$ 3,690.00
Pricing Includes: Travel, Installation					
Per Site Total:			Price	Est. Tax	Total Price
			\$ 6,375.00	\$ 126.71	\$ 6,501.71
Item 6	Existing SignalFire - Battery Replacement Parts	1	\$ 815.00	\$ 38.42	\$ 853.42
Pricing Includes: (7) Signalfire A2 Replacement batt(s)					
Item 8	Ignition Upfront Programming	1	\$ 9,670.00	\$ 456.75	\$ 10,126.75
Pricing Includes: This line item includes modernizing the existing Ignition HMI deployment to enhance the following: <ul style="list-style-type: none"><li>• System Security</li><li>• User Interface Enhancements</li><li>• Trend Improvements</li><li>• Statistics Graphics and Enhancements</li><li>• System Architecture Improvements</li></ul>					
Item 9	On Site Survey	1	\$ 11,490.00	\$ -	\$ 11,490.00
Pricing Includes: Onsite System Survey <ul style="list-style-type: none"><li>• Estimated at 40 Hours of labor, including travel and onsite survey.</li></ul>					
Pricing also Includes: Project Management					
Project Total:			Price	Est. Tax	Total Price
			\$ 45,755.00	\$ 980.31	\$ 46,735.31

#### Notes & Disclaimers:

**Additional T&M Work:** This proposal represents the complete scope of work to be performed by SC. Any additional requirements, specifications or construction details outside of this proposal are not included and will be billed on a T&M basis as mutually agreed upon by all parties.

**Wage Rates:** Pricing is based upon SC standard wage rates and does not include any provisions for any type of Prevailing Wage Requirements. Client to notify SC prior to the beginning of work if different or indemnify SC for any loss or penalties assessed if determined otherwise after the execution of this agreement.

**Warranty:** All equipment manufactured by SC to be under a Limited (1) Year Warranty based upon SC Standard Warranty Terms & Conditions beginning at the time of installation or delivery to client. (Whichever comes first) unless noted otherwise. Warranty is void where no Remote Access is provide or available. Additional Terms & Conditions apply. SC will provide complete warranty terms and conditions upon request. Extended warranties available upon request.

Delivery: Scheduled ARO  
Terms: NET 30  
FOB: RENO, NV

RESPECTFULLY SUBMITTED,  
SIERRA CONTROLS, LLC

D. Andrew Ward - President

*This quote is valid for 30 days.*

*To proceed with this order please sign below with an authorized signature and return.*

Signed

PO Number

Date

