



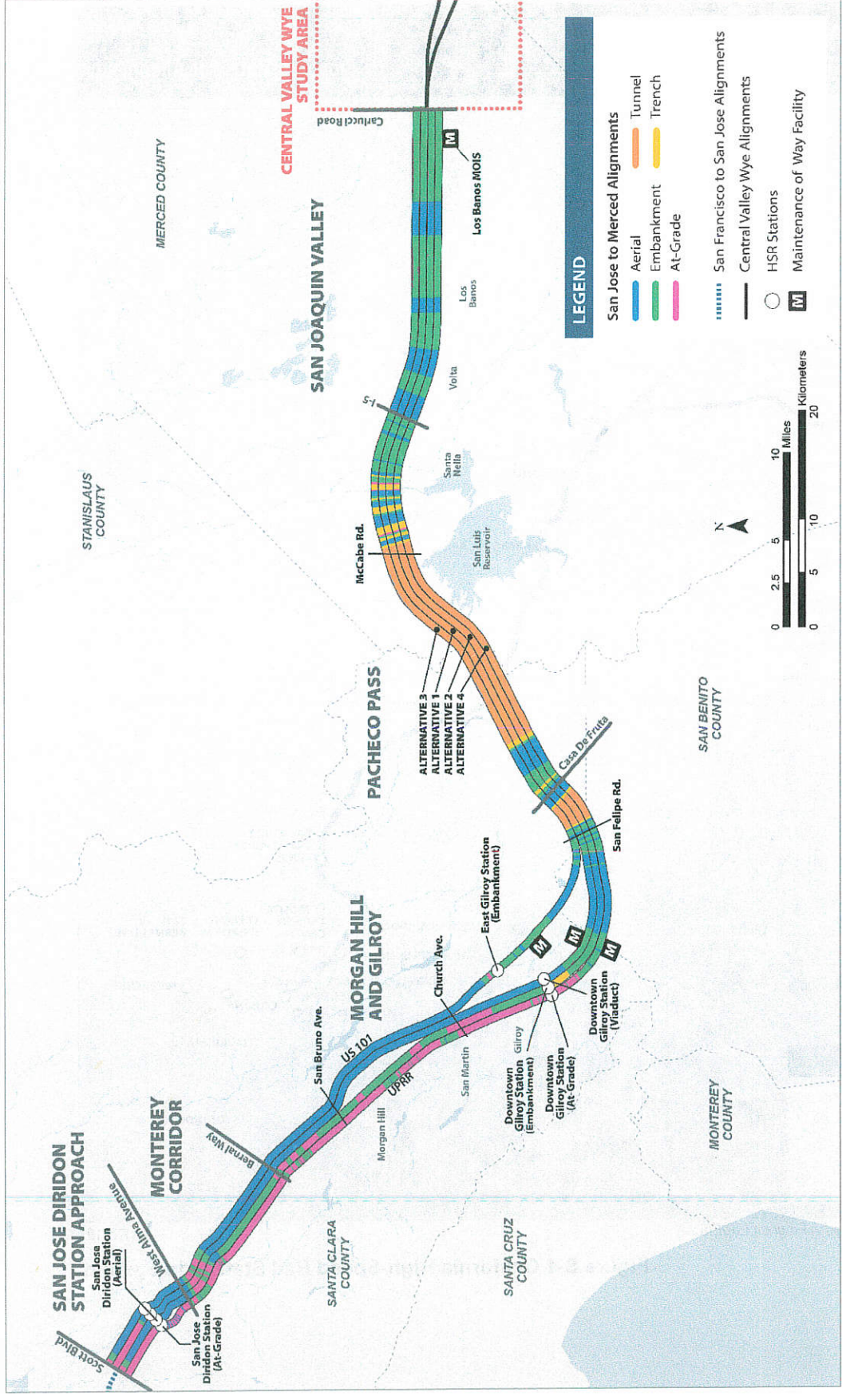
Note: HSR system described in Program EIR/EIS

MAY 2019

Figure S-1 California High-Speed Rail Statewide System

124





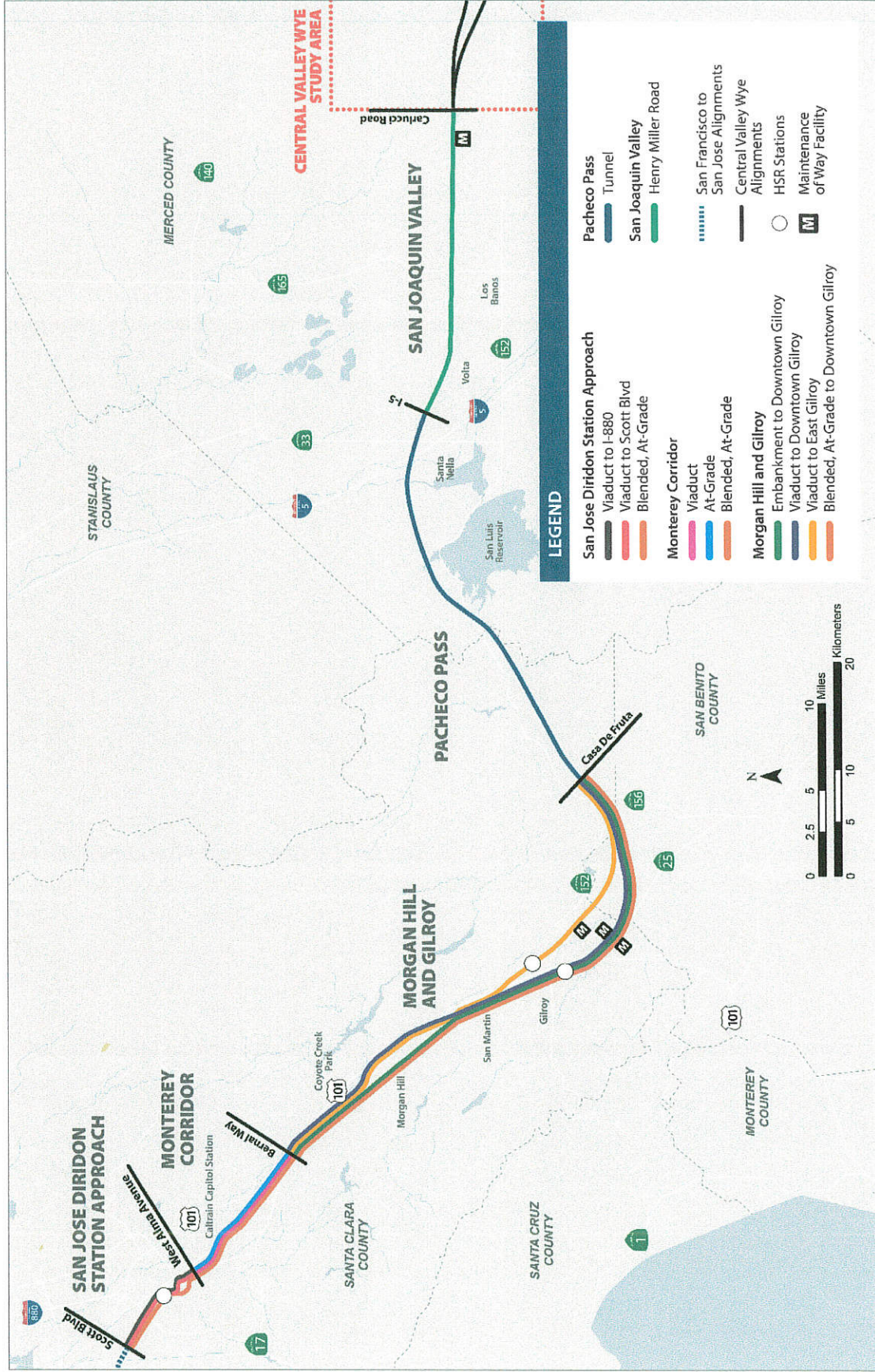
Note: San Jose to Merced Project Alignments are described in Chapter 2, Alternatives.  
 Source: Authority 2019

JANUARY 2019

Figure S-2 San Jose to Merced Project Section

125





X.A.

Note: The design options for each subsection are described in Chapter 2, Alternatives.  
Source: Authority 2019

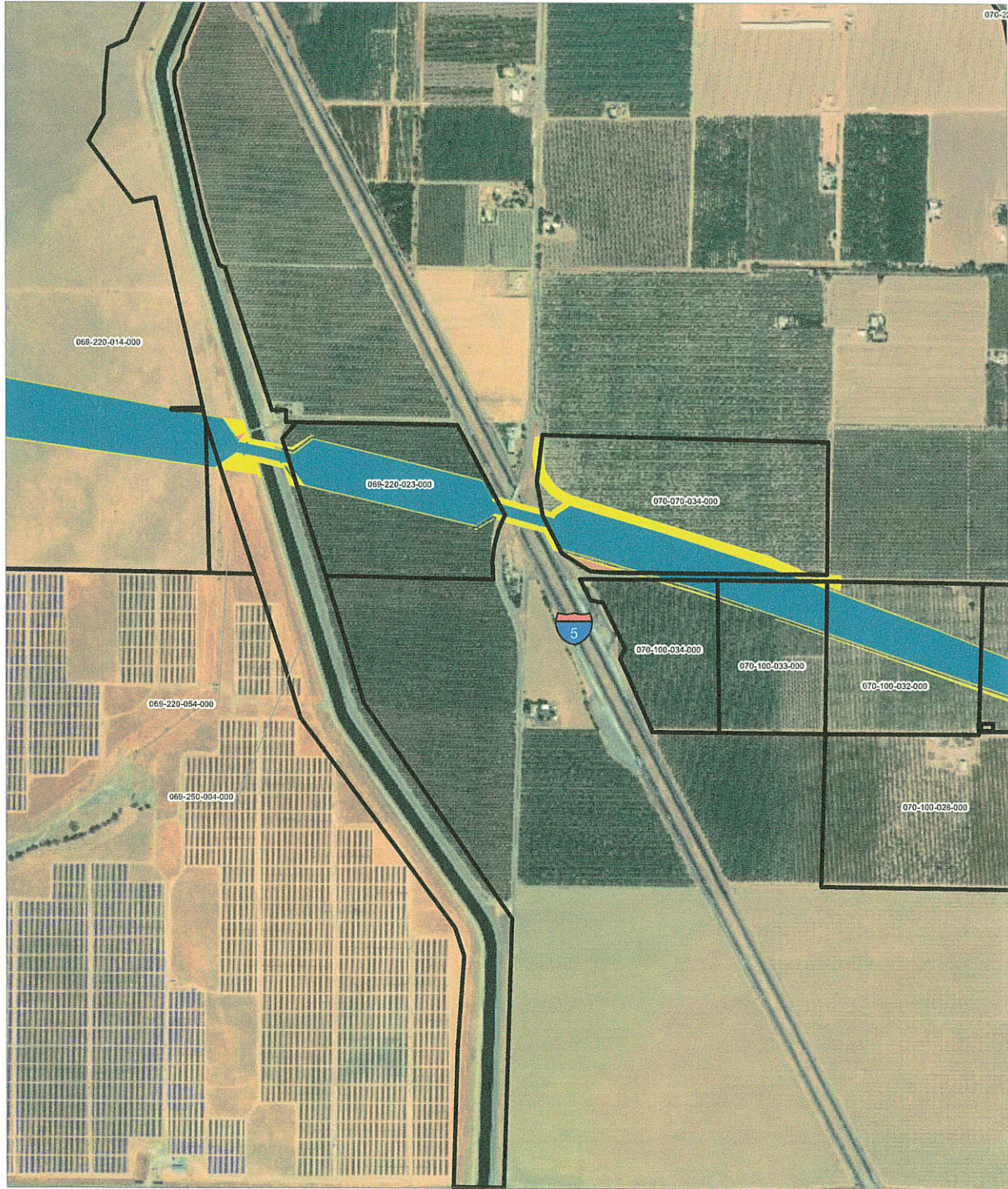
JANUARY 2019

Figure S-3 Overview Map of Design Options by Subsection

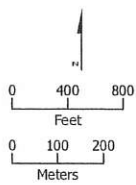
525







PRELIMINARY DRAFT/SUBJECT TO CHANGE - HSR ALIGNMENT IS NOT DETERMINED  
 SOURCE: ESRI, 2019; Santa Clara County, 2016; San Mateo County, 2016, San Francisco County, 2016



- HSR Right-of-Way
- HSR Permanent Easement
- Permanent Utility Easement
- Temporary Construction Easement
- Temporary Utility Easement
- Non-Viable Remnant Parcel
- Parcel (APN Displayed)

**Alternative 3**



126

Blank