



MEMORANDUM

TO: SLDMWA Board of Directors, Alternates

FROM: John Brodie, Water Resources Programs Manager
Chris Linneman, Regional Drainage Coordinator
Orvil McKinnis, Westside Watershed Coalition Coordinator

DATE: January 11, 2024

RE: Activity Agreements – Staff Report for December 2023

This memorandum serves as the Staff Report for December 2023 regarding specified¹ Water Authority activities not separately addressed on the Board meeting agenda.

1. Integrated Regional Water Management (IRWM) Activity Summary

General Westside-San Joaquin Integrated Regional Water Management Plan (IRWMP)

Construction continues on the final two projects funded by the California Department of Water Resources Proposition 1 Round 1 IRWM Implementation grant. The Broadview Aquifer Storage and Recovery Project sponsored by Westlands Water District is targeted to benefit the aquifer below the Corcoran clay to address potential subsidence. The Orestimba Creek Recharge and Recovery Project is constructing approximately 60 acres of recharge ponds and associated infrastructure. It is sponsored by Central California Irrigation District. Work on both must be completed by June, 2024

Self Help Enterprises (SHE) is updating Community Water Needs Assessments for disadvantaged communities (DACs) in the Westside San Joaquin IRWM Region. The Assessments will help DACs identify and prioritize their most critical drinking water needs. The Assessments will include recommendations for navigating drought years. SHE is in the process of completing a summary and analysis of current efforts by members to assist DACs in their areas.

2. Sustainable Groundwater Management Activity (SGMA) Activity Summary

General SGMA Activities

Data compilation and analysis continues for the Delta-Mendota Subbasin’s Water Year 2023 Annual Report. The annual reports are required under the Sustainable Groundwater

¹ For the sake of completeness, this includes those Activity Agreements that have been approved by the Board of Directors, but not yet signed by all interested members and/or participants (i.e., the Los Vaqueros Expansion Project Activity Agreement, the Exchange Contractors 2019-2023 Transfer Program Activity Agreement, and the Westside-San Joaquin Integrated Regional Water Management Activity Agreement).

Memo to SLDMWA Board of Directors
January 11, 2024

Management Act (SGMA). Fall groundwater level monitoring data must be submitted by December 31, 2023.

The SGMA Round 1 Implementation Grant is helping the Subbasin meet SGMA requirements by filling data gaps. One data gap faced by GSPs throughout the San Joaquin Valley is Interconnected Surface Water (ISW). Design of an ISW monitoring network for the Subbasin is complete. Requests for proposals for construction management and installation of the monitoring network will be released in early 2024.

Coordinated Activities

The D-M Subbasin Coordination Committee is in the process of soliciting proposals for construction management for installation of monitoring wells for an Interconnected Surface Water (ISW) Monitoring Network. ISW is one of the sustainability indicators that must be addressed under SGMA. The work will be funded by the SGMA Round 1 Implementation Grant. Staff participated in an interbasin group meeting on interconnected surface water involving most of the subbasins in the San Joaquin Valley December 8, 2023.

State Water Resources Control Board staff in December issued an updated proposed schedule for the Board to conduct probationary hearings for critically overdrafted subbasins in the San Joaquin Valley with Groundwater Sustainability Plans (GSPs) deemed "inadequate" by DWR. The Delta-Mendota Subbasin is one of six such Subbasins. The original schedule, released in June, had a draft staff report being issued in July of 2024 with a Probationary Hearing scheduled for September 2024. The updated schedule released in December indicates a probationary hearing for the Delta-Mendota Subbasin in the first quarter of 2025, with a draft staff report released in the fourth quarter of 2024.

The Coordination Committee desires to maintain a schedule for completing a single GSP in time for adoption no later than July, 2024 by the Subbasins 23 Groundwater Sustainability Agencies (GSAs). The Committee believes submitting a completed GSP in July may avoid a potential probationary hearing and draft staff report on the six GSPs submitted in June, 2022. Limited Coordination Committee members, staff, and consultants have met five times with water board staff to discuss responses to DWR's inadequate determination and development of a single GSP.

3. Drainage Activity Summary

Grassland Basin Drainage Management Steering Committee Activity Summary

The Grassland Bypass Channel gates were closed on March 24th, ending the discharge of storm-induced drainage from the Grassland Drainage Area. Remaining drainage flows have been managed internally by the San Joaquin River Improvement Project since that time. We had a rain event mid-December but were able to manage the storm runoff internally without a discharge.

GBP Activities

- General administration: Review and approve consultant billing. Field review of drainage conditions and correspondence with SJRIP manager.

ale

- Mud Slough Restoration Project: The intent of this project is to restore Mud Slough in accordance with the 2010 MOU between the Authority and California Department of Fish and Wildlife (CDFW). The Water Authority adopted the CEQA for the project in December 2021, which was not challenged. GBP management staff had a meeting with CDFW on August 15th during which CDFW committed to providing a revised MOU that would outline the specific tasks required to complete restoration of Mud Slough. We are still waiting for the revised MOU.
- Compliance Monitoring: Monitoring in compliance with the 2019 revised WDRs and 2019 Use Agreement is a continuous and daily effort. Regular flow, water quality and toxicity monitoring are required at eight locations at a frequency that varies from monthly to daily. Special monitoring for fish and invertebrate selenium levels has occurred annually, along with efforts to collect particulate samples for selenium analysis.
- Grassland Drainage Area Coalition: Work continues to provide coverage for farmers within the Grassland Drainage Area for the Irrigated Lands Regulatory Program. Farm evaluation surveys will be sent out to farmers in 2024.
- Proposition 84 Grant: Work is ongoing to support the Prop 84 Grant administered by Panoche Drainage District for improvements to the San Joaquin River Improvement Project. The Short Term Storage Basins construction is in progress but will take some time to complete. Other projects are in design phase.
- Due to a levee failure on the CCID Outside Canal, a critical drainage culvert was washed out. Work is underway to replace that culvert and expected to be completed before the first of the year.

San Joaquin Valley Drainage Authority Activity Summary

- Participated in conference calls with the Regional Board to respond to questions on surface water quality management plans and required follow up. Working with the Regional Board to formulate a more efficient focused outreach program to address sediment and surface water quality impacts to receiving waters.
- Westside San Joaquin River Watershed Coalition: Work continues to provide coverage under the Irrigated Lands Regulatory Program for farmers within the Westside San Joaquin River Watershed Coalition. The work includes managing the monitoring program, assisting farmers with the necessary reporting to comply with the program and preparing reports for the Regional Board. Analyze pyrethroid Focused Outreach data for follow up MPIRs. Work with consultants to develop new SOWs for FY25 to facilitate budget drafting process.
- Groundwater Protection Formula, Values and Targets: Coalitions have developed a methodology to establish nitrogen loading Values and Targets as required by the WDRs. Conduct meetings with other Coalitions to provide input for upcoming presentation to Regional Board.
- Management Practices Effectiveness Program: Attend conference call meetings of the MPEP group. Developing work schedules to implement nitrogen control measures for farmer member compliance. Work with other Coalitions to develop Acceptable Ranges methodology to be presented in report form to Regional Board by January 16, 2024.

Memo to SLDMWA Board of Directors
January 11, 2024

- Central Valley Groundwater Monitoring Collaborative: Attend conference call meetings to give direction to program. Work with other coalitions and staff to develop an updated groundwater monitoring CQAP.
- Management Zones: Work continued to develop plan for compliance within the Westside Coalition. Review and analyze Valley Water Collaborative budget numbers to inform SJVDA FY24 budget for Management Zone line item. Prepare the contracts and agreements that will be used going forward. Attend Central Valley Salinity Coalition meetings to inform SJVDA regarding Management Zone formation.
- Salt Control Program: Phase I of the Salt Control Program involves the development of a Prioritization and Optimization Study (P&O Study). Consultants are compiling data in order to characterize current salinity conditions of both surface and groundwater across the Central Valley. This work is being supported through the SJVDA budget.
- Prop 84 Real Time Program Grant: Work continues on maintaining the stations, gathering monitoring data, and computer modeling to determine and manage salt discharges to the San Joaquin River. As of October 2023, grant funds billed is \$669,944 with \$185,056 remaining. The project has been extended to December of 2024 and the remaining funds will be used for the purchase of spare monitoring equipment.

VIII.B.

SJVDA

San Joaquin Valley Drainage Authority

842 - 6th Street
P O Box 2157
Los Banos, CA 93635

ANNUAL BUDGET

MARCH 1, 2024 - FEBRUARY 28, 2025

DRAFT (VERSION 1)
PRESENTED TO BOARD JANUARY 9, 2024

99

SAN JOAQUIN VALLEY DRAINAGE AUTHORITY

ANNUAL BUDGET FISCAL YEAR *MARCH 1, 2024 – FEBRUARY 28, 2025*

Table of Contents

FUND DESCRIPTIONS.....	1
BUDGET SUMMARY.....	2
BUDGET EXPENDITURE SUMMARY.....	3
ACTIVITY BUDGETS / COST ALLOCATIONS:	
General Membership.....	4
General Membership Cost Allocation.....	4A
Irrigated Lands Regulatory Program.....	5
Irrigated Lands Regulatory Program Cost Allocation.....	5A
ADMINISTRATIVE & ACCOUNTING BUDGET.....	6
ADMINISTRATIVE / ACCOUNTING / AUDIT EXPENSE ALLOCATION.....	7
SCHEDULE OF MEMBERSHIP DUES.....	8
SCHEDULE OF MEMBERSHIP DUES PER ACRE	9



100

**SAN JOAQUIN VALLEY DRAINAGE AUTHORITY
MARCH 1, 2024 – FEBRUARY 28, 2025**

FUND DESCRIPTIONS

San Joaquin Valley Drainage Authority General Membership (Fund 900)

The San Joaquin Valley Drainage Joint Powers Authority (Drainage Authority) was formed on January 1, 1999. The Drainage Authority was formed to provide a forum for public agencies to participate in coordinated drainage activities, such as the need to have a master drainage plan to address salt balance for irrigated agricultural lands within the San Joaquin Valley. This is the General Fund for the San Joaquin Valley Drainage Authority for general membership.

Each of the members in the Drainage Authority is a public entity empowered to provide water service to lands within their boundaries, provide drainage service, coordinate the operation and maintenance of works and facilities, and provide for the distribution and use of water for irrigation and drainage.

Administration

The Drainage Authority has contracted with the San Luis & Delta-Mendota Water Authority (Water Authority) to provide the administrative functions of the Drainage Authority. The administrative cost of the Drainage Authority is reimbursable to the Water Authority on a monthly basis.

Accounting and Audit

The San Joaquin Valley Drainage Authority has been set up as a separate accounting entity and will be audited separately as a distinct entity.

Irrigated Lands Regulatory Program (Fund 901)

This is a special revenue fund managed by the Regional Water Quality Management Activity. The Drainage Authority is serving as the umbrella agency to allow formation of a regional watershed coalition for purposes of the Irrigated Lands Regulatory Program (formerly, the "Conditional Ag Waiver Program") issued by the Regional Board. Funding for this project will come from participating members and watershed coalition participants who have executed Memoranda of Understanding in order to participate under the umbrella of the watershed coalition.



SAN JOAQUIN VALLEY DRAINAGE AUTHORITY
MARCH 1, 2024 – FEBRUARY 28, 2025

BUDGET SUMMARY

EXPENDITURES	TOTALS	Fund 900 GENERAL MEMBERSHIP	Fund 901 IRRIGATED LANDS REGULATORY PROGRAM
<i>Direct Activity Totals</i>	\$ 3,009,924	\$ 58,092	\$ 2,951,832
<i>Administrative & Accounting Totals</i>	\$ 90,000	\$ 1,737	\$ 88,263
BUDGETED EXPENDITURES	\$ 3,099,924	\$ 59,829	\$ 3,040,095

REVENUES	TOTALS	Fund 900 GENERAL MEMBERSHIP	Fund 901 IRRIGATED LANDS REGULATORY PROGRAM
<i>Funds from/(to) Fund Balances</i>	\$ 219,837	\$ (7,145)	\$ 226,982
<i>Membership Dues</i>	\$ 2,880,087	\$ 66,974	\$ 2,813,113
BUDGETED REVENUES	\$ 3,099,924	\$ 59,829	\$ 3,040,095

**SAN JOAQUIN VALLEY DRAINAGE AUTHORITY
MARCH 1, 2024 – FEBRUARY 28, 2025**

BUDGET EXPENDITURE SUMMARY

Direct Expenses	Total	General Membership Fund 900	Irrigated Lands Reg. Program Fund 901
Legal			
Baker, Manock and Jensen	\$ 20,000	\$ -	\$ 20,000
Kahn, Soares & Conway	\$ 3,000	\$ -	\$ 3,000
Other Professional Services			
Watershed Coordinator (Summers)	\$ 622,800	\$ -	\$ 622,800
David Cory	\$ 95,000	\$ 30,000	\$ 65,000
Field Outreach	\$ 75,000	\$ -	\$ 75,000
Field Coordinator(s)	\$ 158,770	\$ -	\$ 158,770
Monitoring	\$ 462,140	\$ -	\$ 462,140
Management Practices Evaluation Program	\$ 38,000	\$ -	\$ 38,000
Groundwater Protection Formula	\$ 15,000	\$ -	\$ 15,000
CVSalts Prioritization & Optimization Study	\$ 59,000	\$ -	\$ 59,000
Management Zone Development	\$ 229,300	\$ -	\$ 229,300
Membership Database	\$ 53,944	\$ -	\$ 53,944
NMP Summary Reporting	\$ 37,085	\$ -	\$ 37,085
Surface Quality Management Plan	\$ 141,495	\$ -	\$ 141,495
Annual Report	\$ 52,117	\$ -	\$ 52,117
Management Plan Completion Requests	\$ 11,845	\$ -	\$ 11,845
Implement Trend MP/RMP	\$ 106,176	\$ -	\$ 106,176
Water Quality Database	\$ 185,300	\$ -	\$ 185,300
CV Groundwater Monitoring Collaborative	\$ 28,660	\$ -	\$ 28,660
Develop On-line Portal	\$ 16,800	\$ -	\$ 16,800
Delta Regional Monitoring Program	\$ 41,200	\$ -	\$ 41,200
State Board ILRP Fee	\$ 508,700	\$ -	\$ 508,700
Dissolved Oxygen Aerator	\$ 12,500	\$ -	\$ 12,500
CV Salts Program	\$ 20,000	\$ 20,000	\$ -
External Auditing	\$ 9,000	\$ 4,500	\$ 4,500
Liability Insurance	\$ 2,092	\$ 2,092	\$ -
Miscellaneous	\$ 1,500	\$ 500	\$ 1,000
Other Services and Expenses	\$ 3,500	\$ 1,000	\$ 2,500
Total Direct Expenses	\$ 3,099,924	\$ 58,092	\$ 2,951,832
Total Administrative & Accounting Expenses	\$ 90,000	\$ 1,737	\$ 88,263
Total Expenses	\$ 3,099,924	\$ 59,829	\$ 3,040,095

**SAN JOAQUIN VALLEY DRAINAGE AUTHORITY
MARCH 1, 2024 – FEBRUARY 28, 2025**

GENERAL MEMBERSHIP - FUND 900

Proposed Budget

01.05.24

	FY 24 Budget 3/01/23-2/29/24	FY 24 Projected 3/01/23-2/29/24	FY 25 Budget 3/01/24-2/28/25
EXPENDITURES			
Direct Expenditures:			
Other Professional Services:			
David Cory - CVSALTS Consultant	\$ 30,000.00	\$ 30,000.00	\$ 30,000
CVSALTS Program	\$ 20,000.00	\$ 20,000.00	\$ 20,000
External Auditing	\$ 3,750.00	\$ 3,750.00	\$ 4,500
Liability Insurance	\$ 2,092.00	\$ 2,092.00	\$ 2,092
Other Services & Expenses	\$ 1,000.00	\$ 1,000.00	\$ 1,000
Miscellaneous	\$ 500.00	\$ 500.00	\$ 500
Total Direct Expenditures	\$ 57,342	\$ 57,342	\$ 58,092
Administrative Expenditures	\$ 1,600	\$ 1,346	\$ 1,737
Total General Expenditures	\$ 58,942	\$ 58,688	\$ 59,829
REVENUES			
Fund Balance	\$ (38,612)	\$ (41,109)	\$ (7,145)
Other Revenues		\$ 99	\$ -
Membership Dues	\$ 97,554	\$ 97,554	\$ 66,974
Total General Revenues	\$ 58,942	\$ 56,543	\$ 59,829
FUND BALANCE:			
End of FY 23 (Budget Estimated)	\$ 5,000		
End of FY 23 (Unaudited)		\$ (41,109)	
End of FY 24 (Budget Estimated)	\$ 5,000		
End of FY 24 (Estimated)			\$ (2,145)
End of FY 25 (Estimated)			\$ 5,000
		Available/(Required)	\$ (7,145)
BUDGET ASSUMPTIONS:			
- The estimated audit expenses will cover fiscal year 2024.			

PRIOR YEAR & CURRENT YEAR:	FY22	FY23	FY24	FY25
BUDGET	\$ 98,684	\$ 60,845	\$ 58,942	\$ 59,829
MEMBERSHIP DUES	\$ 86,631	\$ (19,998)	\$ 97,554	\$ 66,974

104

**SAN JOAQUIN VALLEY DRAINAGE AUTHORITY
MARCH 1, 2024 – FEBRUARY 28, 2025**

GENERAL MEMBERSHIP COST ALLOCATION

	Acres	%	General Membership	
			\$	\$/Ac
GENERAL MEMBERSHIP MEMBERS			66,974	
Del Puerto Water District	45,229	11.38%	\$ 7,623	\$ 0.169
Pacheco Water District	4,975	1.25%	\$ 839	\$ 0.169
Panoche Drainage District	44,000	11.07%	\$ 7,416	\$ 0.169
Patterson Irrigation District	12,660	3.19%	\$ 2,134	\$ 0.169
* SJRECWA	220,000	55.37%	\$ 37,081	\$ 0.169
San Luis Water District	36,080	9.08%	\$ 6,081	\$ 0.169
Tranquility ID/Fresno Slough WD	11,850	2.98%	\$ 1,997	\$ 0.169
Twin Oaks Irrigation District	2,400	0.60%	\$ 405	\$ 0.169
West Stanislaus Irrigation District	20,155	5.07%	\$ 3,397	\$ 0.169
Total Members	397,349			
			\$ 66,974	\$ 0.169

* San Joaquin River Exchange Contractors Water Authority

SAN JOAQUIN VALLEY DRAINAGE AUTHORITY
MARCH 1, 2024 – FEBRUARY 28, 2025
IRRIGATED LANDS REGULATORY PROGRAM - FUND 901

Proposed Budget

01.05.24

	FY 24 Budget 3/01/23-2/29/24	FY 24 Projected 3/01/23-2/29/24	FY 25 Budget 3/01/24-2/28/25
EXPENDITURES			
Direct Expenditures:			
Legal			
Baker, Manock and Jensen (Gabriel Delgado)	\$ 20,000	\$ 20,000	\$ 20,000
Kahn, Soares & Conway	\$ 1,000	\$ 3,000	\$ 3,000
Other Professional Services			
Watershed Coordinator (Summers)	\$ 603,700	\$ 603,700	\$ 622,800
David Cory	\$ 65,000	\$ 65,000	\$ 65,000
Field Outreach	\$ -	\$ -	\$ 75,000
Field Coordinator(s)	\$ 155,600	\$ 155,600	\$ 158,770
Monitoring	\$ 866,225	\$ 775,000	\$ 462,140
Management Practices Evaluation Program	\$ 28,000	\$ 28,000	\$ 38,000
Groundwater Protection Formula	\$ 10,000	\$ 10,000	\$ 15,000
CVSalts Prioritization & Optimization Study	\$ 59,000	\$ 59,000	\$ 59,000
Management Zone Development	\$ 50,000	\$ 50,000	\$ 229,300
Membership Database	\$ 56,995	\$ 56,995	\$ 53,944
NMP Summary Reporting	\$ 44,990	\$ 44,990	\$ 37,085
Surface Quality Management Plan	\$ 61,695	\$ 61,695	\$ 141,495
Annual Report	\$ 91,230	\$ 91,230	\$ 52,117
Management Plan Completion Requests	\$ 12,395	\$ 12,395	\$ 11,845
Implement Trend MP/RMP	\$ 124,122	\$ 124,122	\$ 106,176
Water Quality Database	\$ 164,845	\$ 164,845	\$ 185,300
CV Groundwater Monitoring Collaborative	\$ 19,640	\$ 19,640	\$ 28,660
Develop On-line Portal	\$ 12,932	\$ 12,932	\$ 16,800
Delta Regional Monitoring Program	\$ 41,200	\$ 41,200	\$ 41,200
State Board ILRP Fee	\$ 516,400	\$ 516,400	\$ 508,700
Dissolved Oxygen Aerator	\$ 12,500	\$ 12,500	\$ 12,500
Other Services & Expenses	\$ 2,500	\$ 2,500	\$ 2,500
Miscellaneous	\$ 1,000	\$ 1,000	\$ 1,000
External Auditing	\$ 3,750	\$ 3,750	\$ 4,500
Total Direct Expenditures	\$ 3,024,719	\$ 2,935,494	\$ 2,951,832
Administrative Expenditures	\$ 84,400	\$ 55,000	\$ 88,263
Total ILRP Expenditures	\$ 3,109,119	\$ 2,990,494	\$ 3,040,095
REVENUES			
Fund Balance	\$ 331,673	\$ 545,619	\$ 226,982
Membership Dues	\$ 2,777,446	\$ 2,771,857	\$ 2,813,113
Total ILRP Revenues	\$ 3,109,119	\$ 3,317,476	\$ 3,040,095
FUND BALANCE:			
End of FY 23 (Budget Estimated)	\$ 5,000		
End of FY 23 (Unaudited)		\$ 545,619	
End of FY 24 (Budget Estimated)	\$ 5,000		
End of FY 24 (Estimated)			\$ 326,982
End of FY 25 (Estimated)			\$ 100,000
		Available/(Required)	\$ 226,982
BUDGET ASSUMPTIONS:			
- The estimated audit expenses will cover fiscal year 2024.			
PRIOR YEAR & CURRENT YEAR:			
BUDGET	\$ 2,701,402	\$ 2,853,004	\$ 3,109,119
MEMBERSHIP DUES	\$ 2,512,307	\$ 2,629,839	\$ 2,777,446
			\$ 2,813,113

106

**SAN JOAQUIN VALLEY DRAINAGE AUTHORITY
MARCH 1, 2024 – FEBRUARY 28, 2025**

IRRIGATED LANDS REGULATORY PROGRAM COST ALLOCATION

	Acres	%	Irrigated Lands	\$/Ac	Fixed Admin. Fee	Total Annual Membership
			Reg. Program \$ 2,811,589			
IRRIGATED LANDS REGULATORY PROGRAM MEMBERS						
Del Puerto Water District	38,066.00	10.9402%	\$ 307,592	\$ 8.081		\$ 307,592
Lone Tree Mutual Water Company	11,344.00	3.2803%	\$ 91,665	\$ 8.081		\$ 91,665
Oak Flats Irrigation District	1,092.00	0.3138%	\$ 8,824	\$ 8.081		\$ 8,824
Pacheco Water District	0.00	0.0000%	\$ -	\$ -		\$ -
Panoche Drainage District	0.00	0.0000%	\$ -	\$ -		\$ -
Patterson Irrigation District	11,144.00	3.2028%	\$ 90,049	\$ 8.081		\$ 90,049
San Joaquin River Exchange Contractors Water Authority	179,902.00	51.7038%	\$ 1,453,698	\$ 8.081		\$ 1,453,698
San Luis Water District	33,700.00	9.6854%	\$ 272,313	\$ 8.081		\$ 272,313
Tranquility ID / Fresno Slough WD	11,145.00	3.2031%	\$ 90,057	\$ 8.081		\$ 90,057
Turner Island Water District	6,314.00	1.8146%	\$ 51,020	\$ 8.081		\$ 51,020
Twin Oaks Irrigation District	2,146.00	0.6168%	\$ 17,341	\$ 8.081		\$ 17,341
West Stanislaus Irrigation District	20,187.00	5.8017%	\$ 163,121	\$ 8.081		\$ 163,121
White Lake Mutual Water Company	1,229.00	0.3532%	\$ 9,931	\$ 8.081		\$ 9,931
1880 Olive Lp (Ramos, John)	18.98	0.0055%	\$ 153	\$ 8.081	\$ 12	\$ 165
A & H Investments	197.15	0.0567%	\$ 1,593	\$ 8.081	\$ 12	\$ 1,605
A & M Bogetti Bros. Inc.	40.00	0.0115%	\$ 323	\$ 8.081	\$ 12	\$ 335
A-Bar Ag Enterprises	140.00	0.0428%	\$ 1,204	\$ 8.081	\$ 12	\$ 1,216
Alberta, Manuel Jr.	37.32	0.0107%	\$ 302	\$ 8.081	\$ 12	\$ 314
Alves Family Trust	59.79	0.0172%	\$ 483	\$ 8.081	\$ 12	\$ 495
Alves, Deolinda	34.92	0.0100%	\$ 282	\$ 8.081	\$ 12	\$ 294
Anderson Road Ranches	100.00	0.0287%	\$ 808	\$ 8.081	\$ 12	\$ 820
Anderson Road Ranches	10.05	0.0029%	\$ 81	\$ 8.081	\$ 12	\$ 93
B B Limited	1,025.35	0.2947%	\$ 8,285	\$ 8.081	\$ 12	\$ 8,297
Baker Farming Company	1,213.20	0.3487%	\$ 9,803	\$ 8.081	\$ 12	\$ 9,815
Bettencourt Land and Trees, LP	197.00	0.0568%	\$ 1,592	\$ 8.081	\$ 12	\$ 1,604
Bettencourt Land and Trees, LP	301.67	0.0867%	\$ 2,438	\$ 8.081	\$ 12	\$ 2,450
Bettencourt, Richard and Darlene	112.00	0.0322%	\$ 905	\$ 8.081	\$ 12	\$ 917
Bizzini, Robert L. & Mildred	26.00	0.0075%	\$ 210	\$ 8.081	\$ 12	\$ 222
Blue River Orchard, LLC	183.08	0.0526%	\$ 1,479	\$ 8.081	\$ 12	\$ 1,491
Bobby Yamamoto Farms, Inc.	335.50	0.0965%	\$ 2,713	\$ 8.081	\$ 12	\$ 2,725
Borba Family Winton Ranch	270.00	0.0778%	\$ 2,182	\$ 8.081	\$ 12	\$ 2,194
Braun Heirs C/O Janice Coelho Amaral	30.00	0.0086%	\$ 242	\$ 8.081	\$ 12	\$ 254
Bravo View Farms	38.00	0.0109%	\$ 307	\$ 8.081	\$ 12	\$ 319
Brazil, Gary & Patricia	87.60	0.0252%	\$ 708	\$ 8.081	\$ 12	\$ 720
Buehner, Kenneth & Lori Trust	3.40	0.0010%	\$ 27	\$ 8.081	\$ 12	\$ 39
Burkhart Heirs	60.00	0.0172%	\$ 485	\$ 8.081	\$ 12	\$ 497
C Bogetti Farms Inc	151.13	0.0434%	\$ 1,221	\$ 8.081	\$ 12	\$ 1,233
Casey, John	42.00	0.0121%	\$ 339	\$ 8.081	\$ 12	\$ 351
Cerutti Brothers Inc.	521.00	0.1497%	\$ 4,210	\$ 8.081	\$ 12	\$ 4,222
Champion, Wayne	52.00	0.0149%	\$ 420	\$ 8.081	\$ 12	\$ 432
Charles S. Cox, Partner For Cox And Perez And Char	20.80	0.0060%	\$ 169	\$ 8.081	\$ 12	\$ 181
City of Los Banos	426.00	0.1224%	\$ 3,442	\$ 8.081	\$ 12	\$ 3,454
City of Newman	102.50	0.0295%	\$ 828	\$ 8.081	\$ 12	\$ 840
City Of Patterson	73.03	0.0210%	\$ 590	\$ 8.081	\$ 12	\$ 602
Coelho, Catherine Et Al	298.81	0.0853%	\$ 2,398	\$ 8.081	\$ 12	\$ 2,410
Craven Farming Co	132.00	0.0379%	\$ 1,087	\$ 8.081	\$ 12	\$ 1,079
Craven Farming Co	200.00	0.0575%	\$ 1,616	\$ 8.081	\$ 12	\$ 1,628
Craven Farming Co.	209.00	0.0801%	\$ 1,689	\$ 8.081	\$ 12	\$ 1,701
D.T. Locke Ranch, Inc.	3.93	0.0011%	\$ 32	\$ 8.081	\$ 12	\$ 44
Darosa Family Trust	155.00	0.0445%	\$ 1,252	\$ 8.081	\$ 12	\$ 1,264
David & Carolyn Santos Farms, LLC	60.10	0.0173%	\$ 488	\$ 8.081	\$ 12	\$ 498
Del Don, Lee Et al	85.80	0.0247%	\$ 693	\$ 8.081	\$ 12	\$ 705
Del Don, Leroy	80.00	0.0230%	\$ 646	\$ 8.081	\$ 12	\$ 658
Del Mar Farms For Matteri, John D. Sr Et Al	40.00	0.0115%	\$ 323	\$ 8.081	\$ 12	\$ 335
Delta Star Group Holdings	3.30	0.0009%	\$ 27	\$ 8.081	\$ 12	\$ 39
Donlon, Shane & Mary Trust	150.88	0.0434%	\$ 1,219	\$ 8.081	\$ 12	\$ 1,231
Double J Farms A California General Partnership	461.00	0.1325%	\$ 3,725	\$ 8.081	\$ 12	\$ 3,737
Ed & Mildred Maring Community Property	59.85	0.0172%	\$ 484	\$ 8.081	\$ 12	\$ 496
El Cafetal LLC	172.97	0.0497%	\$ 1,398	\$ 8.081	\$ 12	\$ 1,410
Escobar, John	49.87	0.0143%	\$ 401	\$ 8.081	\$ 12	\$ 413
Fagundes Bros., LLC	17.75	0.0051%	\$ 143	\$ 8.081	\$ 12	\$ 155

107

SAN JOAQUIN VALLEY DRAINAGE AUTHORITY
MARCH 1, 2024 – FEBRUARY 28, 2025

IRRIGATED LANDS REGULATORY PROGRAM COST ALLOCATION

	Acres	%	Irrigated Lands Reg. Program \$ 2,811,589	\$/Ac	Fixed Admin. Fee	Total Annual Membership
IRRIGATED LANDS REGULATORY PROGRAM MEMBERS						
Ferro, John A.	58.60	0.0163%	\$ 457	\$ 8.081	\$ 12	\$ 469
Freitas Properties	119.00	0.0342%	\$ 962	\$ 8.081	\$ 12	\$ 974
Gaspar Properties	52.34	0.0150%	\$ 423	\$ 8.081	\$ 12	\$ 435
Giannone, Anthony	299.09	0.0860%	\$ 2,417	\$ 8.081	\$ 12	\$ 2,429
Gonsalves Farms	368.65	0.1059%	\$ 2,979	\$ 8.081	\$ 12	\$ 2,991
Goubert, Jerry	163.92	0.0471%	\$ 1,325	\$ 8.081	\$ 12	\$ 1,337
Granelli, John Et Al	10.00	0.0029%	\$ 81	\$ 8.081	\$ 12	\$ 93
Grewal, Harpreet	310.00	0.0891%	\$ 2,505	\$ 8.081	\$ 12	\$ 2,517
Henriques, Ray	67.00	0.0193%	\$ 541	\$ 8.081	\$ 12	\$ 553
Hills Ferry Cemetery District	19.00	0.0055%	\$ 154	\$ 8.081	\$ 12	\$ 166
Hostetter Ranches, LLC	86.30	0.0248%	\$ 697	\$ 8.081	\$ 12	\$ 709
Houk Sisters	331.92	0.0954%	\$ 2,682	\$ 8.081	\$ 12	\$ 2,694
Iyer, Pattabiraman & Sharon	269.21	0.0774%	\$ 2,175	\$ 8.081	\$ 12	\$ 2,187
Jm Enterprises	192.16	0.0552%	\$ 1,553	\$ 8.081	\$ 12	\$ 1,565
John DeCamara	406.00	0.1167%	\$ 3,281	\$ 8.081	\$ 12	\$ 3,293
John Forte Trustee	120.00	0.0345%	\$ 970	\$ 8.081	\$ 12	\$ 982
John M. Nunes / Ann C. Nunes	20.10	0.0058%	\$ 162	\$ 8.081	\$ 12	\$ 174
Jorgensen Ranch	140.40	0.0404%	\$ 1,135	\$ 8.081	\$ 12	\$ 1,147
Joseph Depaoli, Trustee of the James W. Lopes 2019	401.43	0.1154%	\$ 3,244	\$ 8.081	\$ 12	\$ 3,256
KAK Holding LLC, a California Limited Liability Co	239.00	0.0687%	\$ 1,931	\$ 8.081	\$ 12	\$ 1,943
La Saliva, Steve Nicola Smith, Antania Ebner	37.04	0.0106%	\$ 299	\$ 8.081	\$ 12	\$ 311
Larry A. Lemo	10.00	0.0029%	\$ 81	\$ 8.081	\$ 12	\$ 93
Lone Goose Farm	604.65	0.1738%	\$ 4,886	\$ 8.081	\$ 12	\$ 4,898
Los Banos Abattoir Co.	81.00	0.0233%	\$ 655	\$ 8.081	\$ 12	\$ 667
Lucas Holdings, LP	54.56	0.0157%	\$ 441	\$ 8.081	\$ 12	\$ 453
Luckert, James	14.50	0.0042%	\$ 117	\$ 8.081	\$ 12	\$ 129
Luiz, John & Sandra	49.00	0.0141%	\$ 396	\$ 8.081	\$ 12	\$ 408
M3 Land Company LLC	0.00	0.0000%	\$ -	\$ -	\$ -	\$ -
Mac Enterprises	160.00	0.0460%	\$ 1,293	\$ 8.081	\$ 12	\$ 1,305
Mahaffey Family Ltd. Partn.	31.93	0.0092%	\$ 258	\$ 8.081	\$ 12	\$ 270
Mahaffey, James Jr. Trust	11.33	0.0033%	\$ 92	\$ 8.081	\$ 12	\$ 104
Mall, Gary	11.03	0.0032%	\$ 89	\$ 8.081	\$ 12	\$ 101
Marciochi Brothers	74.00	0.0213%	\$ 598	\$ 8.081	\$ 12	\$ 610
Maring, John E.	165.44	0.0475%	\$ 1,337	\$ 8.081	\$ 12	\$ 1,349
Marv Coit Farms	371.00	0.1066%	\$ 2,998	\$ 8.081	\$ 12	\$ 3,010
Menezes, Herman & Yvonne	19.21	0.0055%	\$ 155	\$ 8.081	\$ 12	\$ 167
Meyers Farms Family Trust	375.00	0.1078%	\$ 3,030	\$ 8.081	\$ 12	\$ 3,042
Meyers Farms Family Trust	225.00	0.0647%	\$ 1,818	\$ 8.081	\$ 12	\$ 1,830
Meza, Andrew	1.00	0.0003%	\$ 8	\$ 8.081	\$ 12	\$ 20
Morris, Thomas C.	160.00	0.0460%	\$ 1,293	\$ 8.081	\$ 12	\$ 1,305
NBliv AP6 LLC c/o Sarah Pernu	953.00	0.2739%	\$ 7,701	\$ 8.081	\$ 12	\$ 7,713
Oosterkamp Farms	123.30	0.0354%	\$ 996	\$ 8.081	\$ 12	\$ 1,008
Ornellas Property	814.80	0.2342%	\$ 6,584	\$ 8.081	\$ 12	\$ 6,596
Percy, Bill	17.00	0.0049%	\$ 137	\$ 8.081	\$ 12	\$ 149
Perez Farms	106.68	0.0307%	\$ 862	\$ 8.081	\$ 12	\$ 874
Perez Farms	18.00	0.0052%	\$ 145	\$ 8.081	\$ 12	\$ 157
Petaluma Livestock Auction Corp	24.42	0.0070%	\$ 197	\$ 8.081	\$ -	\$ 197
Peterson, Jim and Judy	94.00	0.0270%	\$ 760	\$ 8.081	\$ 12	\$ 772
Pires, Richard Et Al	61.30	0.0176%	\$ 495	\$ 8.081	\$ 12	\$ 507
Rascone Farms	99.40	0.0286%	\$ 803	\$ 8.081	\$ 12	\$ 815
Reed Leasing Group, Inc.	14.00	0.0040%	\$ 113	\$ 8.081	\$ 12	\$ 125
Richard Lara Farms Inc	248.00	0.0713%	\$ 2,004	\$ 8.081	\$ 12	\$ 2,016
River Ranch	530.00	0.1523%	\$ 4,283	\$ 8.081	\$ 12	\$ 4,295
San Joaquin Wetland Farms	38.00	0.0109%	\$ 307	\$ 8.081	\$ 12	\$ 319
Sandhu, Bros Farms	144.25	0.0415%	\$ 1,166	\$ 8.081	\$ 12	\$ 1,178
Sequeira, Melvin c/o Fritz Troesch	96.00	0.0276%	\$ 776	\$ 8.081	\$ 12	\$ 788
Serpa, G. Joe	17.90	0.0051%	\$ 145	\$ 8.081	\$ 12	\$ 157
Silva, Mary P. Trustee	122.00	0.0351%	\$ 986	\$ 8.081	\$ 12	\$ 998
Spagnolo, Matilda	40.00	0.0115%	\$ 323	\$ 8.081	\$ 12	\$ 335
Stanislaus Properties LLC	282.00	0.0810%	\$ 2,279	\$ 8.081	\$ 12	\$ 2,291
Stonefield Equity, LLC	702.20	0.2018%	\$ 5,674	\$ 8.081	\$ 12	\$ 5,686

108

**SAN JOAQUIN VALLEY DRAINAGE AUTHORITY
MARCH 1, 2024 – FEBRUARY 28, 2025**

IRRIGATED LANDS REGULATORY PROGRAM COST ALLOCATION

	Acres	%	Irrigated Lands	\$/Ac	Fixed Admin. Fee	Total Annual Membership
			Reg. Program \$ 2,811,589			
IRRIGATED LANDS REGULATORY PROGRAM MEMBERS						
Suvik Farms LLC.	167.00	0.0480%	\$ 1,349	\$ 8.081	\$ 12	\$ 1,361
Sweetwater Ridge LLC c/o Tom Teixeira	1,619.70	0.4655%	\$ 13,058	\$ 8.081	\$ 12	\$ 13,100
Sweetwater Ridge, LLC c/o Del Mar Farms	152.72	0.0439%	\$ 1,234	\$ 8.081	\$ 12	\$ 1,246
Tardif, Bruno	1.77	0.0005%	\$ 14	\$ 8.081	\$ 12	\$ 26
Terra Linda Farms	544.21	0.1564%	\$ 4,397	\$ 8.081	\$ 12	\$ 4,409
Texas Ranch Ltd.	190.00	0.0546%	\$ 1,535	\$ 8.081	\$ 12	\$ 1,547
The Pentagon Company	144.34	0.0416%	\$ 1,188	\$ 8.081	\$ 12	\$ 1,178
The Wine Group	129.60	0.0372%	\$ 1,047	\$ 8.081	\$ 12	\$ 1,059
There It Is Farms, LLC	89.28	0.0257%	\$ 721	\$ 8.081	\$ 12	\$ 733
Thompson Revocable Trust	20.00	0.0057%	\$ 162	\$ 8.081	\$ 12	\$ 174
Thorton, Dennis and Nadine	80.00	0.0230%	\$ 646	\$ 8.081	\$ 12	\$ 658
TNT Farms	47.00	0.0135%	\$ 380	\$ 8.081	\$ 12	\$ 392
Traina Dried Fruit	28.00	0.0080%	\$ 226	\$ 8.081	\$ 12	\$ 238
Traina Foods	20.00	0.0057%	\$ 162	\$ 8.081	\$ 12	\$ 174
Treco, Inc.	210.00	0.0604%	\$ 1,697	\$ 8.081	\$ 12	\$ 1,709
US Core Farmland	376.03	0.1081%	\$ 3,039	\$ 8.081	\$ 12	\$ 3,051
Valley AgLands, Inc.	980.00	0.1954%	\$ 5,495	\$ 8.081	\$ 12	\$ 5,507
West Turner Island Land Owners	2,305.70	0.6627%	\$ 18,631	\$ 8.081	\$ 12	\$ 18,643
Wonderful Orchards, LLC	5,927.00	1.7034%	\$ 47,893	\$ 8.081	\$ 12	\$ 47,905
Youngman, Loretta K., Et Al	175.00	0.0503%	\$ 1,414	\$ 8.081	\$ 12	\$ 1,426
Total Members	347,947.34					
	347,947.34	100.0%	\$ 2,811,589		\$ 1,524	\$ 2,813,113

109

**SAN JOAQUIN VALLEY DRAINAGE AUTHORITY
MARCH 1, 2024 – FEBRUARY 28, 2025**

FY25 ADMINISTRATIVE BUDGET

SLDMWA Staff - Accounting/Admin Duties

Employee	Monthly Hours	Monthly *Cost	Yearly Cost
Al	1	69.77	\$ 837.24
Deanna	8	594.88	\$ 7,138.56
Lauren	50	4,399.50	\$ 52,794.00
Cheri	2	140.54	\$ 1,686.48
Darlene	6	597.72	\$ 7,172.64
Ray	2	260.88	\$ 3,130.56
Federico	1	227.82	\$ 2,733.84
Pablo	1	171.34	\$ 2,056.08
Sandi	5	288.05	\$ 3,456.60
TOTAL WAGES	76	6,750.50	\$ 81,006.00

*using FY25 Full Production Hourly Labor Rate

Does not include overhead rate as not all costs apply to SJVDA

Monthly Rent and Expenses

Cost/Sq Ft = \$ 1.22
\$8525/7000

	Sq Ft	Monthly	Yearly
SJVDA Office	145	176.59	2,119.07
Board Room	738	29.96	359.51
***TOTAL RENT		206.55	\$ 2,478.58

***Utilities/Energy	104.43	\$ 1,253.14
***Disposal/Water	6.07	\$ 72.86
***Janitorial	25.00	\$ 300.00
**Office Machines - Maintenance	104.17	\$ 1,250.00
Office Supplies/Postage	25.00	\$ 300.00
TOTAL RENT & EXPENSES	\$ 471.21	\$ 5,654.58

Net Suite Annual Subscription	Monthly	Yearly
Flat rate	250.00	\$ 3,000.00
Total FY25 Anticipated Costs		\$ 89,660.58
FY25 Admin/Accounting Budget		\$ 90,000.00

**25% SJVDA/75% SLDMWA

***calculated cost/sq ft

110

**SAN JOAQUIN VALLEY DRAINAGE AUTHORITY
MARCH 1, 2024 – FEBRUARY 28, 2025**

ADMINISTRATION/ACCOUNTING/AUDIT EXPENSE ALLOCATION

Total Direct Expenses Funds 900-901

	Fund 900 Gen Membership	Fund 901 ILRP	Total 3/1/24 - 2/28/25
\$	58,092 1.93%	2,951,832 98.07%	\$ 3,009,924 100.00%
\$	1,737	88,263	\$ 90,000
\$	1,737	88,263	\$ 90,000
\$	59,829	3,040,095	\$ 3,099,924

Subject to rounding

**Total Allocated Admin/Accounting Expense per SLDMWA FY24 Budget
Total Administration & Accounting Expense**

Total Budgeted Expenses Funds 900-901; Fiscal Year 2025

Audit Expenses:

Audit FY24	Percent
\$ 4,500	50.00%
\$ 4,500	50.00%
\$ 9,000	100.00%

Fund 900
Fund 901

Total

(((

SAN JOAQUIN VALLEY DRAINAGE AUTHORITY

MARCH 1, 2024 – FEBRUARY 28, 2025

SCHEDULE OF MEMBERSHIP DUES

Members	Member ID#	Total	General Membership Fund 900	Irrigated Lands Regulatory Program Fund 901
Del Puerto Water District	DPWD	\$ 315,216	\$ 7,623	\$ 307,592
Lone Tree Mutual Water Company	LTMWC	\$ 91,665	\$ -	\$ 91,665
Oak Flats Irrigation District	OFWD	\$ 8,824	\$ -	\$ 8,824
Pacheco Water District		\$ 839	\$ 839	\$ -
Panoche Drainage District		\$ 7,416	\$ 7,416	\$ -
Patterson Irrigation District	PID	\$ 92,183	\$ 2,134	\$ 90,049
San Joaquin River Exchange Contractors Water Authority	SJRECWA	\$ 1,490,779	\$ 37,081	\$ 1,453,698
San Luis Water District	SLWD	\$ 278,394	\$ 6,081	\$ 272,313
Tranquility ID/ Fresno Slough WD	TID/FSWD	\$ 92,055	\$ 1,997	\$ 90,057
Turner Island Water District	TIWD	\$ 51,020	\$ -	\$ 51,020
Twin Oaks Irrigation District	TOID	\$ 17,745	\$ 405	\$ 17,341
West Stanislaus Irrigation District	WSID	\$ 166,518	\$ 3,397	\$ 163,121
White Lake Mutual Water Company	WLMWC	\$ 9,931	\$ -	\$ 9,931
1880 Olive Lp (Ramos, John)	10075A	\$ 165	\$ -	\$ 165
A & H Investments	11911A	\$ 1,605	\$ -	\$ 1,605
A & M Bogetti Bros. Inc.	11702A	\$ 335	\$ -	\$ 335
A-Bar Ag Enterprises	10688A	\$ 1,216	\$ -	\$ 1,216
Alberta, Manuel Jr.	11329A	\$ 314	\$ -	\$ 314
Alves Family Trust	11578B	\$ 495	\$ -	\$ 495
Alves, Declinda	11578A	\$ 294	\$ -	\$ 294
Anderson Road Ranches	12179A	\$ 820	\$ -	\$ 820
Anderson Road Ranches	13064A	\$ 93	\$ -	\$ 93
B B Limited	10439	\$ 8,297	\$ -	\$ 8,297
Baker Farming Company	13090A	\$ 9,815	\$ -	\$ 9,815
Bettencourt Land and Trees, LP	11601A	\$ 1,604	\$ -	\$ 1,604
Bettencourt Land and Trees, LP	11808A	\$ 2,450	\$ -	\$ 2,450
Bettencourt, Richard and Darlene	13093A	\$ 917	\$ -	\$ 917
Bizzini, Robert L. & Mildred	30014-A	\$ 222	\$ -	\$ 222
Blue River Orchard, LLC	13403A	\$ 1,491	\$ -	\$ 1,491
Bobby Yamamoto Farms, Inc.	13068A	\$ 2,725	\$ -	\$ 2,725
Borba Family Winton Ranch	13071A	\$ 2,194	\$ -	\$ 2,194
Braun Heirs C/O Janice Coelho Amaral	12921A	\$ 254	\$ -	\$ 254
Bravo View Farms	13107A	\$ 319	\$ -	\$ 319
Brazil, Gary & Patricia	13017A	\$ 720	\$ -	\$ 720
Buehner, Kenneth & Lori Trust	11913A	\$ 39	\$ -	\$ 39
Burkhart Heirs	10426	\$ 497	\$ -	\$ 497
C Bogetti Farms Inc	11517A	\$ 1,233	\$ -	\$ 1,233
Casey, John	11156A	\$ 351	\$ -	\$ 351
Cerutti Brothers Inc.	12357A	\$ 4,222	\$ -	\$ 4,222
Champion, Wayne	13062A	\$ 432	\$ -	\$ 432
Charles S. Cox, Partner For Cox And Perez And Char	12381A	\$ 181	\$ -	\$ 181
City of Los Banos	11575A	\$ 3,454	\$ -	\$ 3,454
City of Newman	20180A	\$ 840	\$ -	\$ 840
City Of Patterson	12294A	\$ 602	\$ -	\$ 602
Coehlo, Catherine Et Al	11296A	\$ 2,410	\$ -	\$ 2,410
Craven Farming Co	12194A	\$ 1,079	\$ -	\$ 1,079
Craven Farming Co	12194C	\$ 1,628	\$ -	\$ 1,628
Craven Farming Co.	12194B	\$ 1,701	\$ -	\$ 1,701
D.T. Locke Ranch, Inc.	31108-A	\$ 44	\$ -	\$ 44
Darosa Family Trust	11465A	\$ 1,264	\$ -	\$ 1,264
David & Carolyn Santos Farms, LLC	30975-B	\$ 498	\$ -	\$ 498
Del Don, Lee Et al	12372E	\$ 705	\$ -	\$ 705

112

SAN JOAQUIN VALLEY DRAINAGE AUTHORITY

MARCH 1, 2024 – FEBRUARY 28, 2025

SCHEDULE OF MEMBERSHIP DUES

Members	Member ID#	Total	General Membership Fund 900	Irrigated Lands Regulatory Program Fund 901
Del Don, Leroy	12372A	\$ 658	\$ -	\$ 658
Del Mar Farms For Matteri, John D. Sr Et Al	12372D	\$ 335	\$ -	\$ 335
Deita Star Group Holdings	12332A	\$ 39	\$ -	\$ 39
Donlon, Shane & Mary Trust	10040B	\$ 1,231	\$ -	\$ 1,231
Double J Farms A California General Partnership	12979A	\$ 3,737	\$ -	\$ 3,737
Ed & Mildred Maring Community Property	13092A	\$ 496	\$ -	\$ 496
El Cafetal LLC	10173A	\$ 1,410	\$ -	\$ 1,410
Escobar, John	13069A	\$ 413	\$ -	\$ 413
Fagundes Bros., LLC	12174A	\$ 155	\$ -	\$ 155
Ferro, John A.	12817	\$ 469	\$ -	\$ 469
Freitas Properties	13073A	\$ 974	\$ -	\$ 974
Gaspar Properties	11485A	\$ 435	\$ -	\$ 435
Giannone, Anthony	13079A	\$ 2,429	\$ -	\$ 2,429
Gonsalves Farms	12355A	\$ 2,991	\$ -	\$ 2,991
Goubert, Jerry	12349A	\$ 1,337	\$ -	\$ 1,337
Granelli, John Et Al	10772A	\$ 93	\$ -	\$ 93
Grewal, Harpreet	13110A	\$ 2,517	\$ -	\$ 2,517
Henriques, Ray	25033A	\$ 553	\$ -	\$ 553
Hills Ferry Cemetery District	12925A	\$ 166	\$ -	\$ 166
Hostetler Ranches, LLC	13078A	\$ 709	\$ -	\$ 709
Houk Sisters	12354A	\$ 2,694	\$ -	\$ 2,694
Iyer, Pattabiraman & Sharon	13026A	\$ 2,187	\$ -	\$ 2,187
Jm Enterprises	10478A	\$ 1,565	\$ -	\$ 1,565
John DeCamara	12054A	\$ 3,293	\$ -	\$ 3,293
John Forte Trustee	13097A	\$ 982	\$ -	\$ 982
John M. Nunes / Ann C. Nunes	12977A	\$ 174	\$ -	\$ 174
Jorgensen Ranch	10364A	\$ 1,147	\$ -	\$ 1,147
Joseph Depaoli, Trustee of the James W. Lopes 2019	10435	\$ 3,256	\$ -	\$ 3,256
KAK Holding LLC, a California Limited Liability Co	13111A	\$ 1,943	\$ -	\$ 1,943
La Saliva, Steve Nicola Smith, Antania Ebner	12358B	\$ 311	\$ -	\$ 311
Larry A. Lerno	12936A	\$ 93	\$ -	\$ 93
Lone Goose Farm	12950A	\$ 4,898	\$ -	\$ 4,898
Los Banos Abattoir Co.	12358A	\$ 667	\$ -	\$ 667
Lucas Holdings, LP	12175A	\$ 453	\$ -	\$ 453
Luckert, James	13063A	\$ 129	\$ -	\$ 129
Luiz, John & Sandra	30291-A	\$ 408	\$ -	\$ 408
M3 Land Company LLC	13400F	\$ -	\$ -	\$ -
Mac Enterprises	13400A	\$ 1,305	\$ -	\$ 1,305
Mahaffey Family Ltd. Partn.	12187A	\$ 270	\$ -	\$ 270
Mahaffey, James Jr. Trust	12187C	\$ 104	\$ -	\$ 104
Mall, Gary	13065A	\$ 101	\$ -	\$ 101
Marciochi Brothers	11992A	\$ 610	\$ -	\$ 610
Maring, John E.	13025A	\$ 1,349	\$ -	\$ 1,349
Marv Coit Farms	13401A	\$ 3,010	\$ -	\$ 3,010
Menezes, Herman & Yvonne	30003-A	\$ 167	\$ -	\$ 167
Meyers Farms Family Trust	12231A	\$ 3,042	\$ -	\$ 3,042
Meyers Farms Family Trust	12231B	\$ 1,830	\$ -	\$ 1,830
Meza, Andrew	30263-A	\$ 20	\$ -	\$ 20
Morris, Thomas C.	12118A	\$ 1,305	\$ -	\$ 1,305
NBInv AP6 LLC c/o Sarah Pernu	13108A	\$ 7,713	\$ -	\$ 7,713
Oosterkamp Farms	11590A	\$ 1,008	\$ -	\$ 1,008
Ornellas Property	10190A	\$ 6,596	\$ -	\$ 6,596

103

SAN JOAQUIN VALLEY DRAINAGE AUTHORITY

MARCH 1, 2024 – FEBRUARY 28, 2025

SCHEDULE OF MEMBERSHIP DUES PER ACRE

Members	Member ID#	Total	General Membership Fund 900	Irrigated Lands Regulatory Program Fund 901
Del Puerto Water District	DPWD	\$ 8.249	\$ 0.169	\$ 8.081
Lone Tree Mutual Water Company	LTMWC	\$ 8.081	-	\$ 8.081
Oak Flats Irrigation District	OFWD	\$ 8.081	-	\$ 8.081
Pacheco Water District		\$ 0.169	\$ 0.169	-
Panoche Drainage District		\$ 0.169	\$ 0.169	-
Patterson Irrigation District	PID	\$ 8.249	\$ 0.169	\$ 8.081
San Joaquin River Exchange Contractors Water Authority	SJRECWA	\$ 8.249	\$ 0.169	\$ 8.081
San Luis Water District	SLWD	\$ 8.249	\$ 0.169	\$ 8.081
Tranquility ID/ Fresno Slough WD	TID/FSWD	\$ 8.249	\$ 0.169	\$ 8.081
Turner Island Water District	TIWD	\$ 8.081	-	\$ 8.081
Twin Oaks Irrigation District	TOID	\$ 8.249	\$ 0.169	\$ 8.081
West Stanislaus Irrigation District	WSID	\$ 8.249	\$ 0.169	\$ 8.081
White Lake Mutual Water Company	WLMWC	\$ 8.081	-	\$ 8.081
1880 Olive Lp (Ramos, John)	10075A	\$ 8.081	-	\$ 8.081
A & H Investments	11911A	\$ 8.081	-	\$ 8.081
A & M Bogetti Bros. Inc.	11702A	\$ 8.081	-	\$ 8.081
A-Bar Ag Enterprises	10688A	\$ 8.081	-	\$ 8.081
Alberta, Manuel Jr.	11329A	\$ 8.081	-	\$ 8.081
Alves Family Trust	11578B	\$ 8.081	-	\$ 8.081
Alves, Deolinda	11578A	\$ 8.081	-	\$ 8.081
Anderson Road Ranches	12179A	\$ 8.081	-	\$ 8.081
Anderson Road Ranches	13064A	\$ 8.081	-	\$ 8.081
B B Limited	10439	\$ 8.081	-	\$ 8.081
Baker Farming Company	13090A	\$ 8.081	-	\$ 8.081
Bettencourt Land and Trees, LP	11601A	\$ 8.081	-	\$ 8.081
Bettencourt Land and Trees, LP	11808A	\$ 8.081	-	\$ 8.081
Bettencourt, Richard and Darlene	13093A	\$ 8.081	-	\$ 8.081
Bizzini, Robert L. & Mildred	30014-A	\$ 8.081	-	\$ 8.081
Blue River Orchard, LLC	13403A	\$ 8.081	-	\$ 8.081
Bobby Yamamoto Farms, Inc.	13068A	\$ 8.081	-	\$ 8.081
Borba Family Winton Ranch	13071A	\$ 8.081	-	\$ 8.081
Braun Heirs C/O Janice Coelho Amaral	12921A	\$ 8.081	-	\$ 8.081
Bravo View Farms	13107A	\$ 8.081	-	\$ 8.081
Brazil, Gary & Patricia	13017A	\$ 8.081	-	\$ 8.081
Buehner, Kenneth & Lori Trust	11913A	\$ 8.081	-	\$ 8.081
Burkhart Heirs	10426	\$ 8.081	-	\$ 8.081
C Bogetti Farms Inc	11517A	\$ 8.081	-	\$ 8.081
Casey, John	11156A	\$ 8.081	-	\$ 8.081
Cerutti Brothers Inc.	12357A	\$ 8.081	-	\$ 8.081
Champion, Wayne	13062A	\$ 8.081	-	\$ 8.081
Charles S. Cox, Partner For Cox And Perez And Char	12381A	\$ 8.081	-	\$ 8.081
City of Los Banos	11575A	\$ 8.081	-	\$ 8.081
City of Newman	20180A	\$ 8.081	-	\$ 8.081
City Of Patterson	12294A	\$ 8.081	-	\$ 8.081
Coehlo, Catherine Et Al	11296A	\$ 8.081	-	\$ 8.081
Craven Farming Co	12194A	\$ 8.081	-	\$ 8.081
Craven Farming Co	12194C	\$ 8.081	-	\$ 8.081
Craven Farming Co.	12194B	\$ 8.081	-	\$ 8.081
D.T. Locke Ranch, Inc.	31108-A	\$ 8.081	-	\$ 8.081
Darosa Family Trust	11465A	\$ 8.081	-	\$ 8.081
David & Carolyn Santos Farms, LLC	30975-B	\$ 8.081	-	\$ 8.081
Del Don, Lee Et al	12372E	\$ 8.081	-	\$ 8.081

115

SAN JOAQUIN VALLEY DRAINAGE AUTHORITY

MARCH 1, 2024 – FEBRUARY 28, 2025

SCHEDULE OF MEMBERSHIP DUES PER ACRE

Members	Member ID#	Total	General Membership Fund 900	Irrigated Lands Regulatory Program Fund 901
Del Don, Leroy	12372A	\$ 8.081	\$ -	\$ 8.081
Del Mar Farms For Matteri, John D. Sr Et Al	12372D	\$ 8.081	\$ -	\$ 8.081
Delta Star Group Holdings	12332A	\$ 8.081	\$ -	\$ 8.081
Donlon, Shane & Mary Trust	10040B	\$ 8.081	\$ -	\$ 8.081
Double J Farms A California General Partnership	12979A	\$ 8.081	\$ -	\$ 8.081
Ed & Mildred Maring Community Property	13092A	\$ 8.081	\$ -	\$ 8.081
El Cafetal LLC	10173A	\$ 8.081	\$ -	\$ 8.081
Escobar, John	13069A	\$ 8.081	\$ -	\$ 8.081
Fagundes Bros., LLC	12174A	\$ 8.081	\$ -	\$ 8.081
Ferro, John A.	12817	\$ 8.081	\$ -	\$ 8.081
Freitas Properties	13073A	\$ 8.081	\$ -	\$ 8.081
Gaspar Properties	11485A	\$ 8.081	\$ -	\$ 8.081
Giannone, Anthony	13079A	\$ 8.081	\$ -	\$ 8.081
Gonsalves Farms	12355A	\$ 8.081	\$ -	\$ 8.081
Goubert, Jerry	12349A	\$ 8.081	\$ -	\$ 8.081
Granelli, John Et Al	10772A	\$ 8.081	\$ -	\$ 8.081
Grewal, Harpreet	13110A	\$ 8.081	\$ -	\$ 8.081
Henriques, Ray	25033A	\$ 8.081	\$ -	\$ 8.081
Hills Ferry Cemetery District	12925A	\$ 8.081	\$ -	\$ 8.081
Hostetler Ranches, LLC	13078A	\$ 8.081	\$ -	\$ 8.081
Houk Sisters	12354A	\$ 8.081	\$ -	\$ 8.081
Iyer, Pattabiraman & Sharon	13026A	\$ 8.081	\$ -	\$ 8.081
Jm Enterprises	10478A	\$ 8.081	\$ -	\$ 8.081
John DeCamara	12054A	\$ 8.081	\$ -	\$ 8.081
John Forte Trustee	13097A	\$ 8.081	\$ -	\$ 8.081
John M. Nunes / Ann C. Nunes	12977A	\$ 8.081	\$ -	\$ 8.081
Jorgensen Ranch	10364A	\$ 8.081	\$ -	\$ 8.081
Joseph Depaoli, Trustee of the James W. Lopes 2019	10435	\$ 8.081	\$ -	\$ 8.081
KAK Holding LLC, a California Limited Liability Co	13111A	\$ 8.081	\$ -	\$ 8.081
La Saliva, Steve Nicola Smith, Antania Ebner	12358B	\$ 8.081	\$ -	\$ 8.081
Larry A. Lemo	12936A	\$ 8.081	\$ -	\$ 8.081
Lone Goose Farm	12950A	\$ 8.081	\$ -	\$ 8.081
Los Banos Abattoir Co.	12358A	\$ 8.081	\$ -	\$ 8.081
Lucas Holdings, LP	12175A	\$ 8.081	\$ -	\$ 8.081
Luckert, James	13063A	\$ 8.081	\$ -	\$ 8.081
Luiz, John & Sandra	30291-A	\$ 8.081	\$ -	\$ 8.081
M3 Land Company LLC	13400F	\$ -	\$ -	\$ -
Mac Enterprises	13400A	\$ 8.081	\$ -	\$ 8.081
Mahaffey Family Ltd Partn.	12187A	\$ 8.081	\$ -	\$ 8.081
Mahaffey, James Jr. Trust	12187C	\$ 8.081	\$ -	\$ 8.081
Mall, Gary	13065A	\$ 8.081	\$ -	\$ 8.081
Marciochi Brothers	11992A	\$ 8.081	\$ -	\$ 8.081
Maring, John E.	13025A	\$ 8.081	\$ -	\$ 8.081
Marv Coit Farms	13401A	\$ 8.081	\$ -	\$ 8.081
Menezes, Herman & Yvonne	30003-A	\$ 8.081	\$ -	\$ 8.081
Meyers Farms Family Trust	12231A	\$ 8.081	\$ -	\$ 8.081
Meyers Farms Family Trust	12231B	\$ 8.081	\$ -	\$ 8.081
Morris, Thomas C.	12118A	\$ 8.081	\$ -	\$ 8.081
NBinV AP6 LLC c/o Sarah Pernu	13108A	\$ 8.081	\$ -	\$ 8.081
Oosterkamp Farms	11590A	\$ 8.081	\$ -	\$ 8.081
Ornellas Property	10190A	\$ 8.081	\$ -	\$ 8.081
Percy, Bill	12924A	\$ 8.081	\$ -	\$ 8.081

114

SAN JOAQUIN VALLEY DRAINAGE AUTHORITY

MARCH 1, 2024 – FEBRUARY 28, 2025

SCHEDULE OF MEMBERSHIP DUES PER ACRE

Members	Member ID#	Total	General Membership Fund 900	Irrigated Lands Regulatory Program Fund 901
Perez Farms	12080A	\$ 8.081	\$ -	\$ 8.081
Perez Farms	13081A	\$ 8.081	\$ -	\$ 8.081
Petaluma Livestock Auction Corp	12937A	\$ 8.081	\$ -	\$ 8.081
Peterson, Jim and Judy	13095A	\$ 8.081	\$ -	\$ 8.081
Pires, Richard Et Al	11784A	\$ 8.081	\$ -	\$ 8.081
Rascone Farms	12927A	\$ 8.081	\$ -	\$ 8.081
Reed Leasing Group, Inc.	11919A	\$ 8.081	\$ -	\$ 8.081
Richard Lara Farms Inc	12184A	\$ 8.081	\$ -	\$ 8.081
River Ranch	12922A	\$ 8.081	\$ -	\$ 8.081
San Joaquin Wetland Farms	12980A	\$ 8.081	\$ -	\$ 8.081
Sandhu, Bros Farms	11400A	\$ 8.081	\$ -	\$ 8.081
Sequeira, Melvin c/o Fritz Troesch	13087A	\$ 8.081	\$ -	\$ 8.081
Serpa, G. Joe	30617-A	\$ 8.081	\$ -	\$ 8.081
Silva, Mary P. Trustee	30410-B	\$ 8.081	\$ -	\$ 8.081
Spagnolo, Matilda	11835A	\$ 8.081	\$ -	\$ 8.081
Stanislaus Properties LLC	11883A	\$ 8.081	\$ -	\$ 8.081
Stonefield Equity, LLC	10365A	\$ 8.081	\$ -	\$ 8.081
Suvik Farms LLC.	13109A	\$ 8.081	\$ -	\$ 8.081
Sweetwater Ridge LLC c/o Tom Teixeira	20110A	\$ 8.081	\$ -	\$ 8.081
Sweetwater Ridge, LLC c/o Del Mar Farms	20110A	\$ 8.081	\$ -	\$ 8.081
Terra Linda Farms	12922B	\$ 8.081	\$ -	\$ 8.081
Texas Ranch Ltd.	13400D	\$ 8.081	\$ -	\$ 8.081
The Pentagon Company	13077A	\$ 8.081	\$ -	\$ 8.081
The Wine Group	12058A	\$ 8.081	\$ -	\$ 8.081
There It Is Farms, LLC	13087A	\$ 8.081	\$ -	\$ 8.081
Thompson Revocable Trust	11075A	\$ 8.081	\$ -	\$ 8.081
Thorton, Dennis and Nadine	13096A	\$ 8.081	\$ -	\$ 8.081
TNT Farms	13075A	\$ 8.081	\$ -	\$ 8.081
Traina Dried Fruit	11987A	\$ 8.081	\$ -	\$ 8.081
Traina Foods	11987B	\$ 8.081	\$ -	\$ 8.081
Treco, Inc.	13400C	\$ 8.081	\$ -	\$ 8.081
US Core Farmland	20120A	\$ 8.081	\$ -	\$ 8.081
Valley AgLands, Inc.	13400E	\$ 8.081	\$ -	\$ 8.081
West Turner Island Land Owners	10194A	\$ 8.081	\$ -	\$ 8.081
Wonderful Orchards, LLC	10420	\$ 8.081	\$ -	\$ 8.081
Youngman, Loretta K., Et Al	11404A	\$ 8.081	\$ -	\$ 8.081
		\$ 1,108.55	\$ 1.52	\$ 1,107.03

117

Dissolved Oxygen TMDL Summary
(January 2024)

In January 2005, the Regional Board adopted the Stockton Deep Water Ship Channel (DWSC) Dissolved Oxygen (DO) TMDL and Basin Plan Amendment. The Basin Plan Amendment became effective on February 27, 2007 after it was adopted by USEPA. The Amendment included joint and several allocation of responsibility for the DO problem in the DWSC to parties responsible for the following: 1) Reduced flow in DWSC 2) Geometry of the DWSC (i.e. increased depth) 3) Loads of oxygen demanding substances (i.e. algae and its precursors, nutrients). Beginning December 31, 2011, the Amendment imposed a prohibition of discharge of oxygen demanding substance and their precursors when net daily flow in the DWSC is below 3000 cfs unless DO objectives are being met. Oxygen demanding substances and their precursors include nutrients and algae commonly found in agricultural return flows. This prohibition will not apply if the discharge is regulated by waste discharge requirements (WDR) or waivers of WDRs that implement the DO TMDL control program.

In 2006-07 The Department of Water Resources constructed a pilot aeration device in the DWSC. The facility was designed to inject dissolved oxygen into the San Joaquin River when dissolved oxygen concentrations are less than the Basin Plan's dissolved oxygen water quality objectives. Regional Board staff asked stakeholders representing factors the board theorizes are contributing to the low DO problem, to fund the continued operation of the aerators in the DWSC. In October 2011, The San Luis Delta Mendota Water Authority, The San Joaquin Valley Drainage Authority, The San Joaquin Tributaries Authority, the State Water Contractors (DWR), and The Port of Stockton signed a cost share agreement to fund the aerators. The agreement has been periodically extended since 2011. The current agreement expires on May 31, 2024. The operation of the aerators in the DWSC has been very successful in ensuring attainment of DO objectives in the DWSC.

Total Annual operating costs for the aerators have ranges from \$35,000 to \$120,000 per year. The costs are influenced by amount of oxygen that is pumped into the DWSC. Years with high flows generally need less oxygen than lower flow years. Recently, the total annual cash calls for the project have been \$100,000 per year. Under the current cost share agreement, annual costs are allocated as follows:

Port of Stockton	33.33%
San Luis Delta Mendota Water Authority/San Joaquin Valley Drainage Authority	25.00%
San Joaquin Tributaries Authority	25.00%
State Water Contractors (DWR)	16.67%

The SJVDA share of the costs have been \$12,500 a year for the last two fiscal years.

Prepared by:
David W. Cory

Central Valley Region Salt Control Program: An Ongoing Approach to Prioritizing Salinity Management Measures in the Central Valley

WEDNESDAY, JAN 3RD, 2024

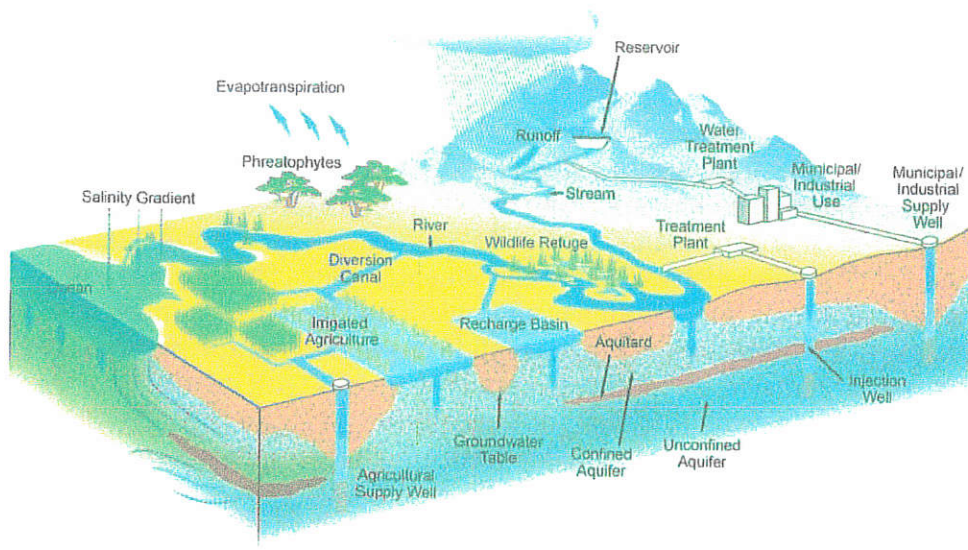
By Daniel Cozad, Central Valley Salinity Coalition

Ken Miller, Formation Environmental

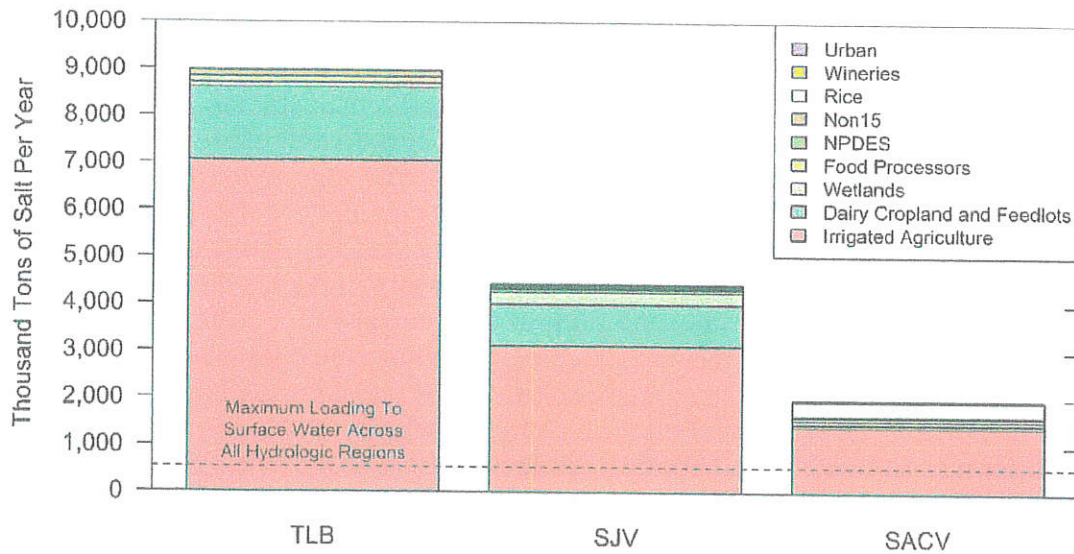
Richard Meyerhoff, GEI Consultants

Tom Grovhoug, Larry Walker Associates

The Central Valley (Valley) watershed is the epicenter of California's economy—encompassing just over 35% of the land in the state. It provides water for millions of people, agriculture, industry, and other businesses from San Francisco to San Diego, as well as food for California, the nation, and the world. Over the last 150 years, increased agricultural, industrial, and municipal activities, coupled with population growth, have resulted in significant increases in salts in soils, groundwater, and surface waters in various areas within in the Central Valley.



**Total Estimated Salt Load
At the Bottom of The Rootzone**

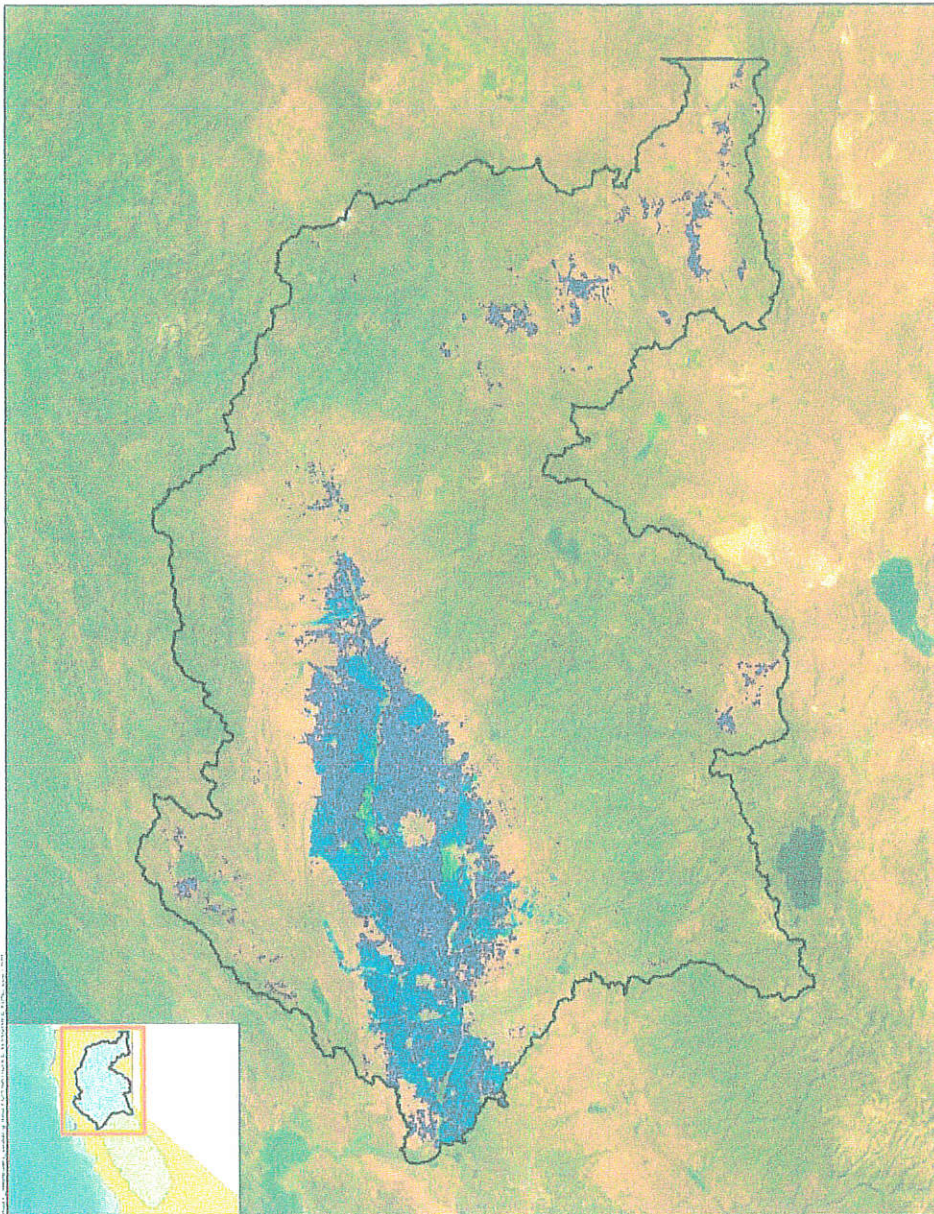


Initial work under the P&O study has confirmed that salt concentrations in the groundwater are naturally high in some areas and increasing at different rates in different regions of the Central Valley. In addition, the P&O Study's use of sophisticated modeling tools has confirmed earlier estimates of salt found in irrigation water, fertilizers, amendments, wastewater, and soils are leaving the root zone towards groundwater from different salt sources. As shown in the bar plot, in the San Joaquin Valley and Tulare Lake

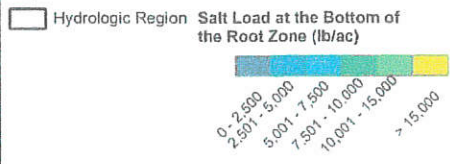
Basin, roughly 4 and 9 million tons of salt, respectively, are concentrated in the root zone and move downward to groundwater every year. In the Sacramento River hydrologic region, approximately 2 million tons of salt moves to groundwater, while about a third of that is exported from the watershed through drainage, as summarized in the Baseline Characterization Report prepared by the P&O Study team of scientists and engineers at Formation Environmental, GEI Consultants, and Larry Walker Associates. The spatial differences in salt loading to surface water and groundwater is a function of the water supply and quality for different uses (e.g., agricultural, municipal) in addition to the factors described by Dickey and Nuss (2002). This variability is depicted in the map below showing the average annual amount of salt moving to below the root zone in the Sacramento River Hydrologic Region. Work is ongoing to estimate the anticipated future groundwater salinity conditions throughout the Central Valley under different future scenarios by using a state-of-the-art groundwater model and considering the complete hydrologic cycle.

The overarching purpose of the P & O Study is to develop a plan to implement new or maintain existing salinity management projects and activities to address long-term salt accumulation in groundwater, protect surface waters, achieve long-term economic vitality for Central Valley agriculture, communities, and other entities, and avoid future significant adverse impacts to salt-sensitive crops and other sensitive uses. While this plan is being developed, an interim salinity permitting approach has been implemented by the Central Valley Water Board that provides certainty for existing Valley dischargers that must manage salt now while the P&O Study is ongoing.

Ultimately, the technical work being performed by the P & O Study and its associated policy and planning efforts crafted by the Water Boards and stakeholders will help guide local actions to support groundwater sustainability with regard to salt accumulation and establish alternative permitting strategies that result in the best, practicable salt management outcomes for the Valley.



Legend



SACRAMENTO RIVER HYDROLOGIC REGION CV-SWAT ESTIMATES OF SALT LOAD AT THE BOTTOM OF THE ROOT ZONE (LBS/AC)

CV-SALTS Prioritization & Optimization Study
Baseline Characterization Report

Sacramento River Hydrologic Region



DELTA - MENDOTA SGMA

Meeting of the Delta-Mendota Subbasin Coordination Committee

Monday January 8, 2024, 1:00 PM

AGENDA

- 1. Call to Order/Roll Call
- 2. Committee to Consider Corrections or Additions to the Agenda of Items, as Authorized by Government Code Section 54950 et seq.
- 3. Opportunity for Public Comment

Consent Calendar

- 4. Committee to Review and Take Action on the Consent Calendar (Hopkins/Brodie)
 - a) Minutes of the December 11, 2023 Committee Meeting
 - b) Coordination Committee Budget to Actual Report

Action Items

- 5. Committee to Consider Approval of Fiscal Year 2024 Budget Augmentation, Brodie/Petersen
- 6. Committee to Consider Approval of Fiscal Year 2025 Budget, Hopkins/Hurley/Ramirez
- 7. Committee to Consider Approval of Chair and Vice Chair Appointments for Calendar Year 2024, Brodie/Layne

Report Items

- 8. Committee to Discuss Water Leader Institute and Recruitment, Ortega/EDF/RCAC
- 9. Committee to Discuss Next Scheduled Subbasin Tour for Board Members and Staff, Brodie
- 10. Committee to Discuss December 19, 2023 SWRCB Meeting and December 20, 2023 Technical Meeting with SWRCB Staff, Hurley/Martin/Dutton/Brodie
- 11. Committee to Discuss Progress on Development of a Single GSP for the Subbasin

- a) Coordinating with the Central Valley Regional Water Quality Control Board and Other Water Quality Programs, Martin/Ortega
 - b) Draft GSP Sections on Hydrologic Conceptual Model and Groundwater Conditions, Dutton
 - c) Demand Management for the Subbasin, Hurley/Martin/Dutton
 - d) Draft Well Mitigation Policy, Brodie
 - e) Timeline and Budget Update, Dutton/Brodie
12. Committee to Discuss DMS Data Input Issues for the Annual Report and Development of the Annual Report, Dumas/Cochran
13. Committee to Review Monitoring Exceedances, Dumas/Dutton
14. Committee to Discuss GSP Implementation Schedule, Dutton
15. Committee to Discuss Available Funding Opportunities, Brodie
16. Next Steps
17. Reports Pursuant to Government Code Section 54954.2(a)(3)
18. Future Delta-Mendota Subbasin Coordination Committee Meetings
- a. Monday February 12, 2024 1:00 PM SLDMWA Board Room
 - b. Monday March 11, 2024 1:00 PM SLDMWA Board Room
 - c. Future Special Meetings May Be Scheduled at the Request of the Committee.

19. ADJOURNMENT

Persons with a disability may request disability-related modification or accommodation by contacting Cheri Worthy or Sandi Ginda at the Water Authority Office, 842 6th Street, P.O. Box 2157 Los Banos, CA 93635, via telephone at (209) 826-9696, or via email at cheri.worthy@sldmwa.org or sandi.ginda@sldmwa.org. Requests should be made as far in advance as possible before the meeting date, preferably 3 days in advance of regular meetings or 1 day in advance of special meetings/workshops.

Meeting of the Delta-Mendota Subbasin Coordination Committee
Monday December 11, 2023, 1:00 PM DRAFT
SLDMWA Board Room, 842 Sixth St., Los Banos, CA

Coordination Committee Members and Alternates Present

Jarrett Martin, Member – Central California Irrigation District (CCID)/ San Joaquin River Exchange Contractors (SJREC)

John Wiersma, Member – San Luis Canal Company (SLCC)/ SJREC

Chase Hurley, Member – Pacheco Water District/ Central Delta-Mendota

Lacey McBride, Alternate – Merced County/ Northern & Central Delta-Mendota Regions

Vince Lucchesi, Member – Patterson Irrigation District/ Northern Delta-Mendota Region

Christy McKinnon, Alternate – Stanislaus County/ Northern Delta-Mendota Region*

Ric Ortega, Member – Grassland Water District (Grassland)

Augie Ramirez, Alternate – Fresno County

Jim Stilwell, Member – Farmers Water District (FWD)

Joe Hopkins, Member – Aliso Water District/ Provost & Pritchard (P&P)

San Luis & Delta-Mendota Water Authority (SLDMWA) Staff Present

John Brodie

Others Present

Steve Stadler – San Luis Water District

Adam Scheuber – Del Puerto Water District*

Juan Cadena – Mercy Springs Water District/Panoche Water District*

Patrick McGowan – Panoche Water District*

Lauren Layne – Baker Manock & Jensen*

Mariana Rivera-Torres – Environmental Defense Fund (EDF)

Laura Dubin – Rural Community Assistance Corporation (RCAC)

Chris Olvera – Department of Water Resources (DWR)*

Anona Dutton – EKI Environment & Water, Inc. (EKI)

Sarah Gerenday – EKI*

Susan Xie – EKI*

Leslie Dumas – Woodard & Curran*

Will Halligan – Luhdorff & Scalmanini Consulting Engineers (LSCE)*

Andrew Francis – LSCE*

Rick Iger – P&P*

Steve Haze – Tranquillity Resource Conservation District*

* Denotes participation via telephone or Zoom

1. Call to Order/Roll Call

John Wiersma (SLCC/ SJREC) called the meeting to order at 1:04 PM.

2. Committee to Consider Corrections or Additions to the Agenda of Items, as Authorized by Government Code Section 54950 et seq.

No corrections or additions were made.

3. Opportunity for Public Comment

No public comments were made.

Consent Calendar

4. Committee to Review and Take Action on the Consent Calendar (Wiersma/Brodie)

- a) Minutes of the November 13, 2023 Committee Meeting
- b) Coordination Committee Budget to Actual Report

John Brodie (SLDMWA) noted as part of the Budget to Actual Report that a FY 2024 budget augmentation of \$25,000 will be necessary. Ric Ortega (Grassland) moved to accept the Consent Calendar items. The motion was seconded by Augie Ramirez (Fresno County) and passed unanimously.

Report Items

5. Presentation on Water Leadership Institute, Ortega/EDF/RCAC

Mariana Rivera-Torres (EDF) and Laura Dubin (RCAC) gave a presentation on the Water Leader Institute for Committee members. The program is grant funded and would come at no cost to the Committee or participants. They requested that the GSAs assist with identifying session location(s), participants, and potential guest speakers.

6. Committee to Discuss Fiscal Year 2025 Budget Process, Hopkins/Hurley/Ramirez

The Committee discussed the budget process for Fiscal Year 2025. The budget will be reviewed by the Ad Hoc Committee, which will provide additional input before the budget is presented to the full Committee for approval at the January 2024 meeting.

7. Committee to Discuss Request for Proposals (RFP) for Construction Management of Interconnected Surface Water (ISW) Well Installation, Brodie

John Brodie reminded the Committee that the draft RFP for construction management of ISW well installation was distributed the previous week and asked for feedback as soon as possible, so that the final version can be released on the upcoming Thursday. Brodie noted that DWR will not give an extension for the grant. Leslie Dumas (Woodard & Curran) noted that DWR will require several documents to be approved before construction begins.

8. Committee to Discuss November 15, 2023 State Water Resources Control Board (SWRCB) Member Delta-Mendota Subbasin Tour, Martin/Ortega/Wiersma

Jarrett Martin (CCID/ SJREC), Ric Ortega, and John Wiersma gave a summary of the November 15th Basin tour for SWRCB members and staff. There was consensus among the Committee members participating in the tour that the SWRCB members expressed the sentiment that the Subbasin will be in compliance if 2015 water levels are maintained.

9. Committee to Discuss Next Subbasin Tour for Board Members and Staff, Lucchesi/Brodie

John Brodie reported that he is working with Northern Management Committee members on a tour for SWRCB Chairman Esquivel, which would also be open to staff. Committee members expressed the desire for Board members Firestone and D'Adamo to tour the southern part of the Subbasin focused on disadvantaged communities.

10. **Committee to Discuss Associate of California Water Agencies (ACWA) Comment Letter on the SWRCB Staff Report on the Tulare Lake Groundwater Sustainability Plan (GSP), Layne/Martin**

The Committee discussed the comment letter submitted by ACWA on the SWRCB Staff Draft Report on the Tulare Lake GSP. The Committee decided against submitting its own comment letter.

11. **Committee to Discuss December 20, 2023 Technical Meeting with SWRCB Staff, Dutton/Hurley/Martin/Stilwell**

Anona Dutton (EKI) gave an overview of topics that would be discussed in the December 20th meeting with SWRCB staff. Dutton noted that the meeting would be largely focused on groundwater level Sustainable Management Criteria (SMC) and the definition of undesirable results. Other topics may include preliminary water quality results and the definition of undesirable results for groundwater storage.

12. **Committee to Discuss November Subbasin Ad Hoc Technical Subcommittee Meeting, Dutton**

Anona Dutton summarized the November Ad Hoc Technical Subcommittee meeting. The meeting focused on quantification of overdraft and demand management measures, clarifications regarding GSA comments received to date on the draft GSP sections, and an overview of tours and meetings with SWRCB.

13. **Committee to Discuss Demand Management for the Subbasin, Dutton**

Anona Dutton presented an overview of potential methods of estimating groundwater demand and establishing allocations/demand management. The GSAs discussed the need for accurate and balanced water budgets on local and Subbasin-wide scales. There is also a need to quantify the benefits of Projects and Management Actions (PMAs) and demand management. EKI agreed to provide additional maps and quantification of overdraft for the GSAs to ground truth and identify problem areas related to water level declines and subsidence. GSAs representatives agreed to submit quantifiable demand management estimates in January 2024.

14. **Committee to Discuss a Funding Framework for the Subbasin's Well Mitigation Program, Brodie**

John Brodie provided a preliminary draft of a well mitigation framework directly to Committee members via email and requested comments by Friday, December 22nd. A revised preliminary draft will be transmitted to Committee members prior to the January meeting.

15. **Committee to Discuss Representative Monitoring Network (RMN) Wells, Dutton/Dumas/Brodie**

The Committee discussed the status of the RMN. Anona Dutton explained that the Subbasin now has a RMN for water levels and water quality and that all GSAs have satisfied their minimum obligations under the Memorandum of Agreement but data gaps remain. Dutton reminded Committee members that a Request for Information for finalization of the Interconnected Surface Water (ISW) and Subsidence RMNs had been distributed, with responses due by December 22nd.

16. Committee to Discuss Basis of Design Report for the Subbasin Interconnected Surface Water Monitoring Network, Halligan/Francis

Andrew Francis (LSCE) gave an update on the design of the ISW monitoring network. Francis explained that four Tier 1 sites had been proposed, three of which will be constructed with grant funds and a fourth to be constructed separately. Ten Tier 2 sites were also proposed for construction when funding is available. Francis noted that the Chowchilla Subbasin was also working on an ISW monitoring network but that other adjacent subbasins did not appear to be doing so at this time.

17. Committee to Discuss Progress on Development of a Single GSP for the Subbasin, Brodie/Dutton

Anona Dutton reported that a draft Groundwater Conditions chapter would be delivered by the end of the year and requested that comments on the Groundwater Conditions and Hydrogeologic Conceptual Model chapters be submitted by the end of January. Dutton also emphasized the need for the GSAs to finalize commitments regarding PMAs so that draft PMA and Plan Implementation chapters could be provided in February 2024. Rick Iger (P&P) noted that to evaluate the impacts on water levels, PMAs would need to be included in the numerical model in addition to the water budget. Dutton confirmed that that is the intent.

18. Committee to Review Monitoring Exceedances, Dumas/Dutton

Leslie Dumas reported that Fall groundwater level and water quality data for most Subbasin GSAs was still not present in the Data Management System (DMS) and requested that it be uploaded immediately. Several GSAs noted that they had reported or attempted to report their data but had trouble with the DMS. Dumas agreed to investigate the issue and contact Houston Engineering.

19. Committee to Review Annual Report Development, Dumas/Cochran

This item was discussed under Item 18.

20. Committee to Discuss GSP Implementation Schedule, Dutton

This agenda item was discussed under Item 17.

21. Committee to Discuss Available Funding Opportunities, Brodie

John Brodie referred those in attendance to a list funding opportunities in the meeting packet. He also noted that information regarding technical assistance for small farmers is included.

22. Next Steps

- John Brodie will distribute a copy of the ACWA comment letter to the Committee.
- Links to additional draft GSP chapters will be distributed for review and edits.
- Sample Memorandum of Agreement and Special Project Agreement resolutions will be distributed to the GSAs and should be signed and returned as soon as possible.
- Feedback on ISW monitoring network construction management RFP is due December 18th.
- Feedback on the initial well mitigation framework is due December 22nd.
- Recruiting for Water Leadership Institute participation is needed for the January 8th meeting.
- EKI will provide an ET map with 1-mile resolution.

- EKI will provide a map of water level declines and subsidence for consideration in developing PMAs.
- Zone groups are to provide estimated target numbers for demand management/subsidence reduction and PMA commitments by January 2024.

23. Reports Pursuant to Government Code Section 54954.2(a)(3)

No reports were made under this agenda item.

24. Future Delta-Mendota Subbasin Coordination Committee Meetings

- a. Monday January 8, 2024 1:00 PM Grassland Water District
- b. Monday February 12, 2024 1:00 PM SLDMWA Board Room
- c. Future Special Meetings May Be Scheduled at the Request of the Committee.

25. ADJOURNMENT

John Wiersma adjourned the meeting at 4:59 PM.

DRAFT

Blank

VIII. C.

SAN LUIS & DELTA-MENDOTA WATER AUTHORITY
 MARCH 1, 2023 - FEBRUARY 29, 2024
 SGMA ACTIVITIES - COORDINATED COST-SHARE AGREEMENT
 ACTIVITY AGREEMENTS BUDGET TO ACTUAL
 COORDINATED (FUND 63)

Report Period 3/1/23 - 11/30/23
 Coordination Meeting 01.09.2024

EXPENDITURES	Annual Budget	Paid/ Expense	Amount Remaining	% of Amt Remaining	Expenses Through
<u>Legal:</u>					
Baker Manock & Jensen	\$ 30,960	\$ 56,964	\$ (26,004)	-84%	11/6/23
<u>Other Professional Services:</u>					
GSP Implementation Contracts					
Coordinated Annual Reports Activities (Common Chapter, Water Level Contouring)	\$ 146,093	\$ 237,643	\$ (91,550)	-63%	10/19/23
DMS Hosting, Augmentation and Support	\$ 11,367		\$ 11,367	100%	
Staff Augmentation Support (EKI)	\$ 65,000	\$ 264,470	\$ (199,470)	-307%	8/14/23
DAC Outreach and Coordination	\$ 30,000		\$ 30,000	100%	
SGMA Implementation Grant Round 1 SPA (A9)	\$ 75,560	\$ 95,075	\$ (19,515)	-26%	11/15/23
SGMA Implementation Grant Round 2 SPA (B0)	\$ 75,560		\$ 75,560	100%	
<u>Other:</u>					
Executive Director	\$ 2,364	\$ -	\$ 2,364	100%	
General Counsel	\$ 4,082	\$ 275	\$ 3,807	93%	8/31/23
Water Policy Director	\$ 7,100	\$ 9,280	\$ (2,180)	-31%	11/30/23
Water Resources Program Manager	\$ 62,400	\$ 51,609	\$ 10,791	17%	11/30/23
Accounting	\$ 2,916	\$ 1,826	\$ 1,090	37%	11/30/23
License & Continuing Education	\$ 500		\$ 500	100%	
Conferences & Training	\$ 1,000	\$ 342	\$ 658	66%	
Travel/Mileage	\$ 2,500	\$ 1,251	\$ 1,249	50%	
Group Meetings	\$ 1,000	\$ 352	\$ 648	65%	
Telephone	\$ 500		\$ 500	100%	
Software	\$ 780		\$ 780	100%	
Equipment and Tools	\$ 5,650		\$ 5,650	100%	
Total Expenditures	\$ 525,332	\$ 719,088	\$ (193,756)	-37%	

*EKI task order amendment and corresponding \$200,000 budget increase approved 4/24/23 by the Coordination Committee and 5/4/23 by the SLDMWA Board

126

SAN LUIS & DELTA-MENDOTA WATER AUTHORITY
MARCH 1, 2024 - FEBRUARY 28, 2025
SGMA ACTIVITIES - COORDINATED COST-SHARE AGREEMENT
COORDINATED (FUND 63)

FY24 Projections & FY25 Budget Draft FAC/WRC/BOD Workshop 1/17/24	FY24 Budget 3/1/23 - 2/29/24	FY24 Projected Actual @ 2/29/24	FY25 Budget 3/1/24 - 2/28/25 Draft 2
EXPENDITURES			
Legal:			
Baker Manock & Jensen	\$ 30,960	\$ 65,000	\$ 33,120
Other Professional Services:			
GSP Implementation Contracts			
Coordinated Annual Report Activities (Common Chapter, Water Level Contouring)	\$ 146,093	\$ 146,093	\$ 151,627
DMS Hosting, Augmentation and Support	\$ 11,367	\$ 11,367	\$ 12,000
Staff Augmentation Support (EKI)	\$ 65,000	\$ 65,000	\$ 71,040
DAC Outreach and Coordination	\$ 30,000	\$ 30,000	\$ 30,000
Inadequate Determination Response (EKI)	\$ -	\$ 200,000	\$ -
Interconnected Surface Water Program (Component 8)	\$ -	\$ 24,000	\$ 616,000
SGMA Implementation Grant Round 2 SPA (A10)	\$ 75,560	\$ -	\$ -
Special Project Agreement Services:			
SGMA Implementation Grant Round 1 SPA (A9)	\$ 75,560	\$ 75,560	\$ 73,330
Single GSP Development (EKI) (XX)	\$ -	\$ 651,392	\$ 750,000
Other:			
Executive Director	\$ 2,364	\$ 500	\$ 2,736
General Counsel	\$ 4,082	\$ 471	\$ 4,836
Water Policy Director	\$ 7,100	\$ 14,566	\$ 8,450
Water Resources Program Manager	\$ 62,400	\$ 70,354	\$ 74,400
Accounting	\$ 2,916	\$ 2,650	\$ 4,752
License & Continuing Education	\$ 500	\$ 500	\$ 500
Los Banos Administrative Office (LBAO)	\$ -	\$ -	\$ -
Conferences & Training	\$ 1,000	\$ 1,000	\$ 1,000
Travel/Mileage	\$ 2,500	\$ 2,500	\$ 2,500
Group Meetings	\$ 1,000	\$ 1,000	\$ 1,000
Telephone	\$ 500	\$ 500	\$ 500
Software	\$ 780	\$ 780	\$ 780
Equipment and Tools	\$ 5,650	\$ 5,650	\$ 5,650
Total Expenditures	\$ 525,332	\$ 1,368,883	\$ 1,844,221
REVENUES			
Fund Balance	\$ (200,021)	\$ (218,329)	\$ (285,664)
Collections for Single GSP Development		\$ 651,752	
Membership Dues	\$ 725,353	\$ 649,796	\$ 2,129,885
Total Revenues	\$ 525,332	\$ 1,083,219	\$ 1,844,221

FUND BALANCE:			
End of FY 23 (Budget Estimated)	\$ (200,021)		
End of FY 23 (Unaudited)		\$ (218,329)	
End of FY 24 (Budget Estimated)	\$ -		
End of FY 24 (Estimated)			\$ (285,664)
End of FY 25 (Estimated)			\$ -
		Available/(Required)	\$ (285,664)

PRIOR YEAR:	FY22	FY23	FY24	FY25
BUDGET	\$ 260,696	\$ 282,831	\$ 525,332	\$ 1,844,221
MEMBERSHIP DUES	\$ 260,696	\$ 298,079	\$ 725,353	\$ 2,129,885

FY24 Budget ASSUMPTIONS:

- 1 - Grant reimbursed, allocated to participants pursuant to Fund 63 Cost Share Agreement
- 2 - Allocated to participants pursuant to Special Project Agreement
- 3 - Allocated to participants in FY24 pursuant to Special Project Agreement, tracking for budgetary purposes only

127

SAN LUIS & DELTA-MENDOTA WATER AUTHORITY
MARCH 1, 2024 - FEBRUARY 28, 2025
SGMA ACTIVITIES - COORDINATED COST-SHARE AGREEMENT

FY24 Projections & FY25 Budget Draft
 FAC/WRC/BOD Workshop 1/17/24

DIVISION	Central DM Multi Agency GSA		SGMA Coord	Legal, Other Prof., Other	SGMA Rd 1 (Grant Admin)	Single GSP SPA
	Total Acres	Acres				
DIVISION 1						
			\$ 2,129,885	\$ 1,306,555	\$ 73,330	\$ 760,000
1. Banta-Carbona ID			\$ -	\$ -		
2. City of Tracy			\$ -	\$ -		
3. Del Puerto Water District (DPWD 52,570 ac + Oak Flat 4,503 ac)	57,073	0	\$ 24,506	\$ 21,776	\$ 2,730	
3A. Del Puerto (92% of DPWD GSA Cost)			\$ 22,545	\$ 20,034	\$ 2,512	
3B. Oak Flat (8% of DPWD GSA Cost)			\$ 1,960	\$ 1,742	\$ 218	
4. Patterson Irrigation District (PID 13,067 ac + Twin Oaks 2,829 ac)	15,896	0	\$ 21,879	\$ 21,776	\$ 103	
5. Byron Bethany Irrigation District			\$ -	\$ -	\$ -	
6. West Stanislaus ID (WSID 21,299 ac + Grayson/Westley 246 ac)	21,545	0	\$ 24,079	\$ 21,776	\$ 2,303	
Total Division 1	94,314	0	\$ 70,464	\$ 65,328	\$ 5,136	\$ -
DIVISION 2						
1. Panoche Water District	38,317	38,317	\$ 9,116	\$ 9,073	\$ 43	
2. San Luis Water District	55,316	55,316	\$ 18,765	\$ 9,073	\$ 9,692	
3. Westlands Water District (1)			\$ -	\$ -	\$ -	
4. Charleston Drainage District			\$ -	\$ -	\$ -	
5. Panoche Drainage District			\$ -	\$ -	\$ -	
6. Pleasant Valley			\$ -	\$ -	\$ -	
Total Division 2	93,633	93,633	\$ 27,881	\$ 18,147	\$ 9,734	\$ -
DIVISION 3						
1. Central California Irrigation District			\$ -	\$ -	\$ -	
2. Firebaugh Canal Water District			\$ -	\$ -	\$ -	
3. Grassland Water District			\$ 232,658	\$ 217,759	\$ 14,899	
4. HMRD #2131			\$ -	\$ -	\$ -	
5. Columbia Canal Company (Friend Member)			\$ -	\$ -	\$ -	
6. Camp 13 Drainers			\$ -	\$ -	\$ -	
Total Division 3	0	0	\$ 232,658	\$ 217,759	\$ 14,899	\$ -
DIVISION 4						
1. San Benito County Water District			\$ -	\$ -	\$ -	
2. Santa Clara Valley Water District (2)			\$ -	\$ -	\$ -	
Total Division 4	0	0	\$ -	\$ -	\$ -	\$ -
DIVISION 5						
1. Broadview Water District			\$ -	\$ -	\$ -	
2. Eagle Field Water District	1,325	1,325	\$ 9,116	\$ 9,073	\$ 43	
3. Fresno Slough WD	1,459	1,459	\$ 9,116	\$ 9,073	\$ 43	
4. James Irrigation District			\$ -	\$ -	\$ -	
5. Laguna Water District			\$ -	\$ -	\$ -	
6. Mercy Springs Water District	3,840	3,840	\$ 9,116	\$ 9,073	\$ 43	
7. Oro Loma Water District	1,258		\$ 9,116	\$ 9,073	\$ 43	
8. Pacheco Water District	4,999	4,999	\$ 9,116	\$ 9,073	\$ 43	
9. Reclamation District 1606			\$ -	\$ -	\$ -	
10. Tranquillity ID	10,750	10,750	\$ 9,116	\$ 9,073	\$ 43	
11. Turner Island Water District		0	\$ -	\$ -	\$ -	
Total Division 5	23,631	22,373	\$ 64,895	\$ 64,437	\$ 257	\$ -
OTHER						
1. San Joaquin River Exchange Contractors**			\$ 232,611	\$ 217,760	\$ 14,851	
2. Northwestern Delta Mendota Subbasin GSA (Stan. Cty 56,766 ac + Merced Cnty 3,035 ac)	59,801	0	\$ 21,879	\$ 21,776	\$ 103	
2a. Merced County (5% of Northwestern DM GSA Cost)			\$ 1,094	\$ 1,089	\$ 5	
2b. Stanislaus County (95% of Northwestern DM GSA Cost)			\$ 20,785	\$ 20,688	\$ 98	
3. City of Patterson GSA	6,140	0	\$ 21,879	\$ 21,776	\$ 103	
4. Fresno County (Fresno County Management Area)	29,728	29,728	\$ 230,597	\$ 226,832	\$ 3,764	
5. Merced County (Central DM Portion)	14,176	14,176	\$ 9,117	\$ 9,074	\$ 43	
6. Santa Nella County Water District	1,488	1,488	\$ 9,116	\$ 9,073	\$ 43	
7. Aliso Water District			\$ 230,551	\$ 217,760	\$ 12,891	
8. Farmers Water District			\$ 229,222	\$ 217,759	\$ 11,462	
9. Widren GSA	877		\$ 9,116	\$ 9,073	\$ 43	
Total Other	112,210	45,392	\$ 994,188	\$ 959,884	\$ 43,304	\$ -
Total	323,788	161,398	\$ 1,379,885	\$ 1,306,555	\$ 73,330	\$ -

**Note: San Joaquin River Exchange Contractors to allocate to GSP Region participants.

2, 3 - Refer to Budget Assumptions on budget page

128

Blank

VIII.C.

DELTA-MENDOTA SUBBASIN RESPONSE TO INADEQUATE DETERMINATION

129

8 JANUARY 2024

COORDINATION COMMITTEE

OVERVIEW

- 10. Highlights from 12/19 SWRCB Board meeting and Feedback from 12/20 meeting with SWRCB staff
- 11. Progress on Development of a Single GSP for the Subbasin
 - b) Draft HCM and GWC Sections
 - c) Demand Management
 - x) Water Quality
- 14. GSP Implementation Schedule

130

eki

10. SWRCB MEETINGS

131

eki

2

3



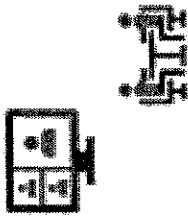



HIGHLIGHTS FROM 12/19 SWRCB BOARD MEETING

- Updated hearing date for Delta-Mendota is Q1 2025.
- Revised single GSP must be submitted 3 months before hearing for SWRCB staff review (submit by Q4 2024).
- If SWRCB staff report has not been released, focus revisions on DWR deficiencies.
- Basin can exit state intervention if GSP deficiencies are deemed resolved.
- SWRCB will likely revise probationary basin pumping fee schedule from 2017 based on feedback that fees are too high.
- SWRCB places great importance on stakeholder outreach.

13a

eki

ANTICIPATED PRE-PROBATIONARY SCHEDULE FOR DELTA-MENDOTA

Sep 2024		Release draft deficiencies <u>Notice to cities and counties</u>
Sep 2024		Notice to all known pumpers
Oct 2024		Stakeholder meetings
Nov 2024		Public comment period ends
Feb 2025		Release final deficiencies <u>Issue draft resolution</u>
Mar 2025		Hearing <u>Potential probationary designation</u>

133
Dates estimated based on Tulare Lake schedule and assuming probationary hearing in March 2025.

FEEDBACK FROM 12/20 MEETING WITH SWRCB STAFF

- Add cap on number of (drinking water) wells dewatered to Groundwater Level SMCs
 - E.g., UR occurs if MTs are exceeded at 25% or more of RMS for two consecutive years or **X** drinking water wells are dewatered in **Y** years.
 - Justify number
 - Specify in GSP which RMWs have historical data
 - Further discussion needed on WQ

134

eki

POTENTIAL WELL IMPACTS

Scenario	Aquifer	Dewatered Well Count			Total (Both Aquifers)
		Drinking Water Wells	Other Production Wells	Total	
Worst Case (All RMWs reach MTs)	Upper	67	34	101	113
	Lower	6	6	12	
High-End Bracketed (25% of RMWs with highest density of production wells reach MTs)	Upper	56	18	74	86
	Lower	6	6	12	
Low-End Bracketed (25% of RMWs with lowest density of production wells reach MTs)	Upper	0	0	0	0
	Lower	0	0	0	
Stochastic Prediction	Upper	17	8	25	28
	Lower	1	1	3	

135

11. GSP DEVELOPMENT STATUS

136

eki

PROGRESS ON DEVELOPMENT OF SINGLE GSP

- Draft water level MTs and well impacts calculated
- Updates to CVHM2 numerical model and water budget
- Representative Monitoring Networks for water levels and water quality finalized
- Finalizing ISW and Subsidence RMNs
 - **RMN revisions due December 22nd**
 - **Responses received from**
 - Northern & Central
 - Farmers WD
 - Fresno County
- Comments received on draft Introduction and Plan Area chapters
- Draft Hydrogeologic Conceptual Model (HCM) and Groundwater Conditions (GWC) chapters provided for GSA review
 - **HCM comments due January 12th**
 - **GWC comments due January 31st**

137

eki

DEMAND MANAGEMENT UPDATES

- GSAs developing demand management actions/ policies – due by end of January
- EKI provided maps showing areas at risk for subsidence and declining water levels
- EKI updating model to establish baseline demand, overdraft, and effects of P/MAs

139

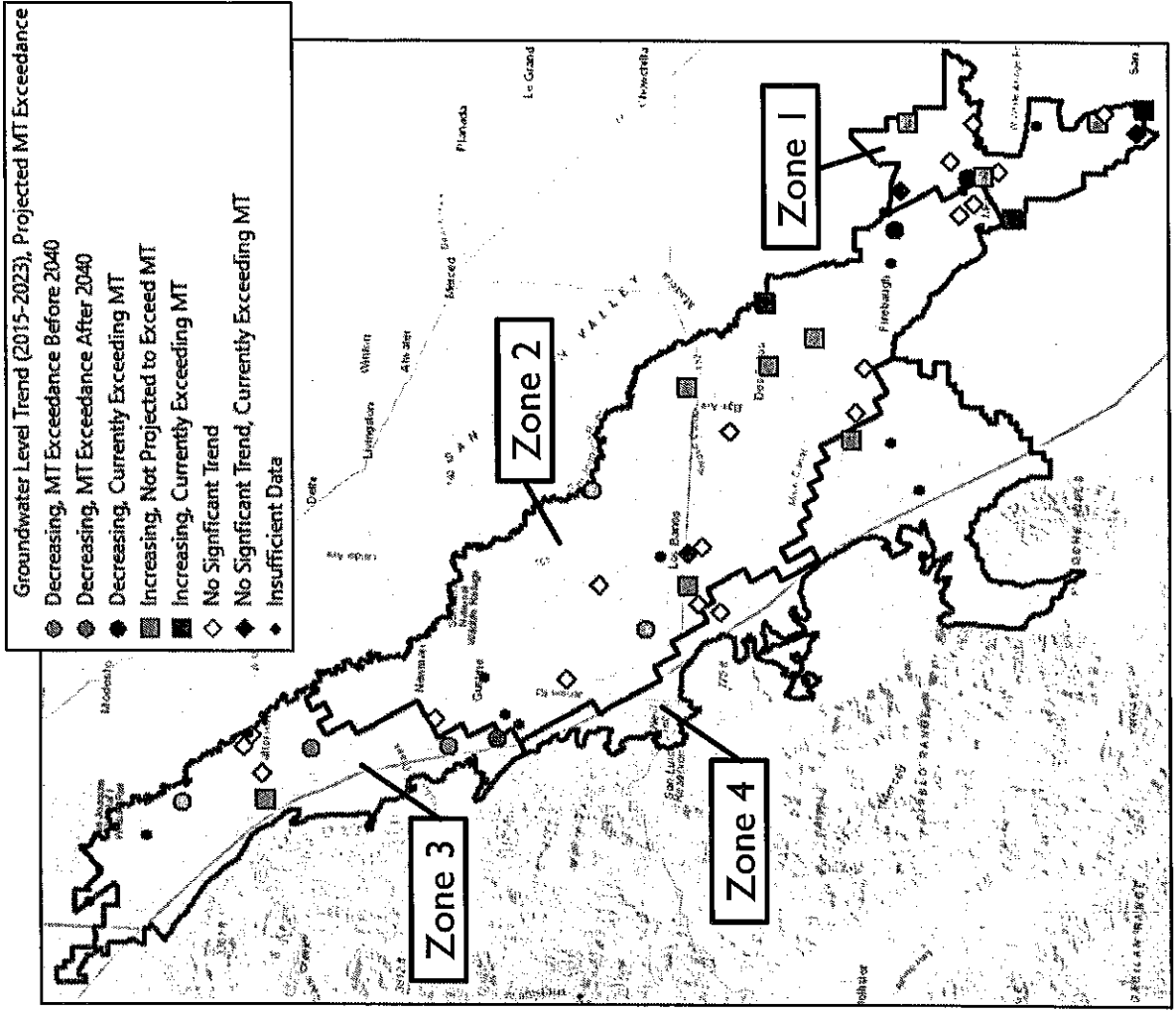
eki

GROUNDWATER TRENDS – UPPER AQUIFER

- Groundwater Level Trend:
 - Increasing: 13 RMWs (23%)
 - Decreasing: 8 RMWs (14%)
 - No Significant Trend: 22 RMWs (39%)
 - Insufficient Data to Calculate Trend : 13 RMWs (23%)
- MT Exceedance Projection
 - Current: 11 RMWs (20%)
 - By 2030: 3 RMWs (5%)
 - By 2035: 0 RMWs
 - By 2040: 0 RMWs
 - After 2040: 11 RMWs (20%)
 - No Significant Trend, MT not currently exceeded: 18 RMWs (32%)
 - Insufficient Data: 13 RMWs (23%)

1/21

eki



MODEL UPDATE STATUS

- CVHM2-SJV (Model) is extended to WY 2023.
- Public data and data received from GSP Groups were used to extend the model.
- For WY 2023, missing/unavailable data were supplied by substituting values from a similar water year type or replicating WY 2022 data, whichever more appropriate.
- EKI has updated Surface Water delivery at the PMA Zone level and investigated Zone ET demands and GW pumping against measured and estimated data shared by GSP Groups.
- Historical simulation is not yet completely finalized:
 - EKI is working on selective improvement of model performance in a few areas, to the extent possible, without launching a calibration effort .
 - We are working on incorporating data and information we received in late December.

143

SW DELIVERY AND GW PUMPING ADJUSTMENTS

- Zone 1 is undergoing further adjustments to Aliso WD demand and Fresno County SW delivery that will minorly change its pumping and GW storage change and may slightly impact neighboring zones.
- Misalignment between Zone boundaries and Model Cells/Water Balance Subregions induces some difference between simulated and reported values, specifically in allocation of SW delivery to Zones.
- We do not expect a significant departure from originally reported Zone overdrafts for their PMA planning. We will report final overdrafts after finishing the latest round of adjustments.

Adjusted SW delivery and GW pumping in the extended Model – Average for the WY2003-WY2023 period (AFY)

PMA Zone	GW Pumping		SW Delivery		Change in Storage (Overdraft)	
	Reported	CVHM2-SJV	Reported	CVHM2-SJV	Extended Model	Original Model (2003-2018)
Zone 1*	119,996	136,893	50,093	46,967	-12,406	-10,966
Zone 2	172,837	149,121	877,156	883,260	-31,705	-25,608
Zone 3**	77,377	87,373	210,431	245,477	-19,298	-19,848
Zone 4**	39,727	109,175	145,373	154,024	-26,162	-23,418

* The Zone 1 reported average is for WY 2003-2019 and is based on reported values in September. Aliso WD SW delivery was updated based on further data provided. EKI is making adjustments based on newly shared data from Fresno County.

** Zones 3 and 4 reported GW pumping and SW delivery are based on WY 2003-2022.



WATER BUDGET PERIODS

Water Year Types	2003-2012	2003-2018
Wet	30%	25%
Above Normal	10%	6%
Below Normal	20%	19%
Dry	20%	19%
Critical	20%	31%
(Shasta Critical)		
Average Precipitation (CVHM2-SJV; inch)	11.00	10.55

- Historical period:
 - Prior GSP used 2003-2012
 - Current GSP extends historical period to 2003-2018

- Current period:
 - Prior GSP used 2013 (Critical WY)
 - Current GSP uses the average conditions for WY2019-2023 (Includes 2 Wet, 2 Critical, and 1 Dry water years)

- Projected baseline
 - Prior GSP used a modified arrangement of the 50-year historical period.
 - Current GSP will use a 50-year period of WY1973-2022.

145

eki

WATER BUDGET NEXT STEPS

- EKI will deliver finalized water budgets for the historical period in January, including:
 - Historical water budget table with an explanation and body diagram of water budget components per PMA Zone and for the entire Basin;
 - Summarized overdraft, pumping, and SW delivery results as presented before;
 - Hydrographs of RMWs showing simulated and observed GW levels for each PMA Zone.
- EKI will initiate Projected and Climate Change simulations, intended to be delivered in February:
 - Climate change scenarios will follow the same approach presented in June. 2030 and 2070 Central Tendency scenarios will be run using DWR-provided change factors, upstream inflows, and deliveries.
 - To assess the impacts of PMAs:
 - Projected scenarios will be run separately to incorporate PMAs with sufficient data
 - PMAs with provided data based on water year types will be adjusted based on the projected period.
 - The difference between projected water budgets and PMA scenarios will demonstrate the effectiveness of PMAs.

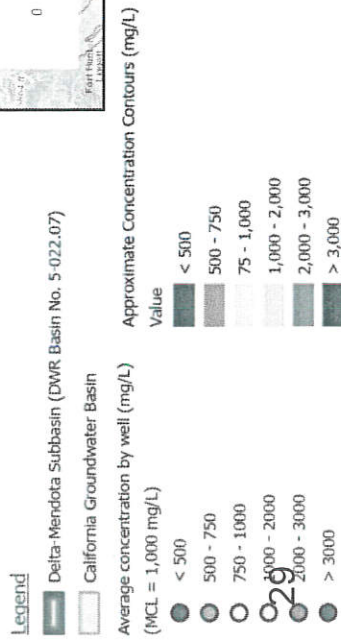
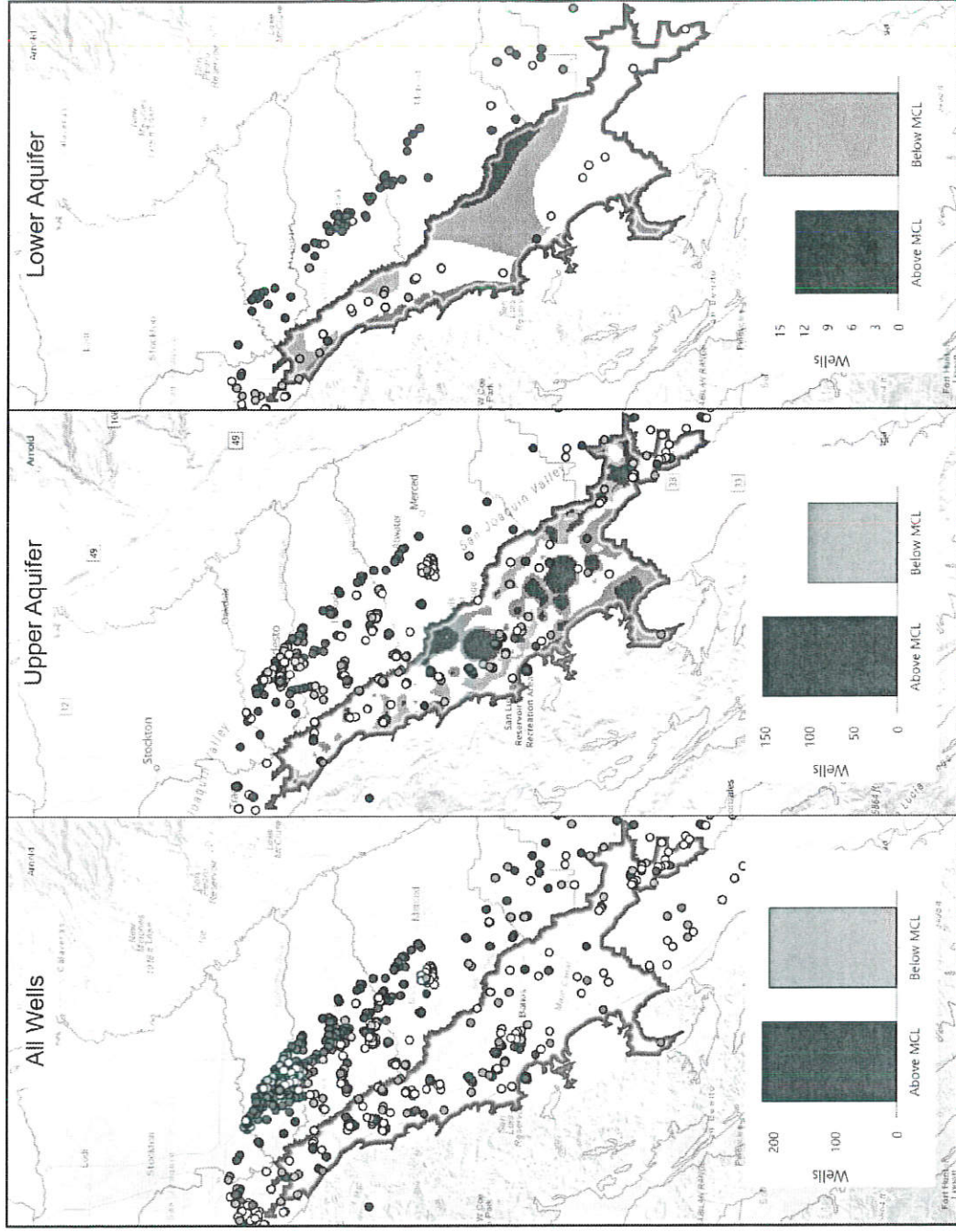
WATER QUALITY UPDATE

- Used data provided by GSAs and public data from GAMA
- Mapped average concentrations by well for 10 years prior to SGMA implementation (2005 – 2014) and 9 years following (2015 – 2023)
- Developed concentration contours for TDS and nitrate using same methodology as CV-Salts 2016 groundwater quality analysis
- Calculated wells impacted by TDS and nitrate based on contours and OSWCR well locations

147

WATER QUALITY – TDS (PRE-SGMA)

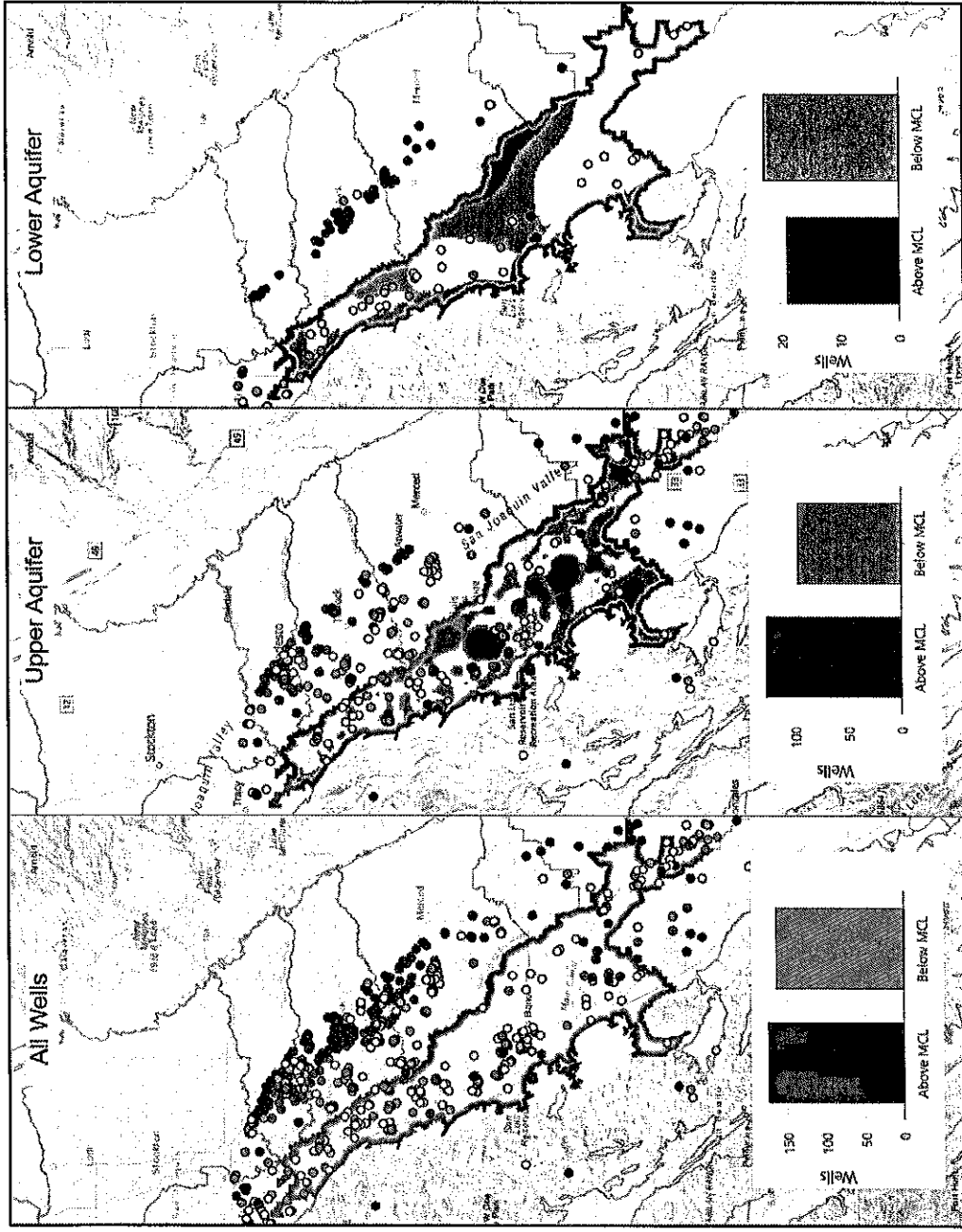
- Majority of Upper Aquifer exceeded the MCL (~54% of total volume)
- Lower Aquifer has lower TDS (and more limited data) but still has exceedances
- Upper Aquifer locations NOT exceeding MCL primarily due to infiltrating rivers/streams



148

WATER QUALITY – TDS (POST – SGMA)

- Similar spatial patterns
- ~55% of Upper Aquifer volume exceeds MCL
- More wells with TDS > 3,000 mg/L, particularly in south (due to migration of the Western Saline Front)

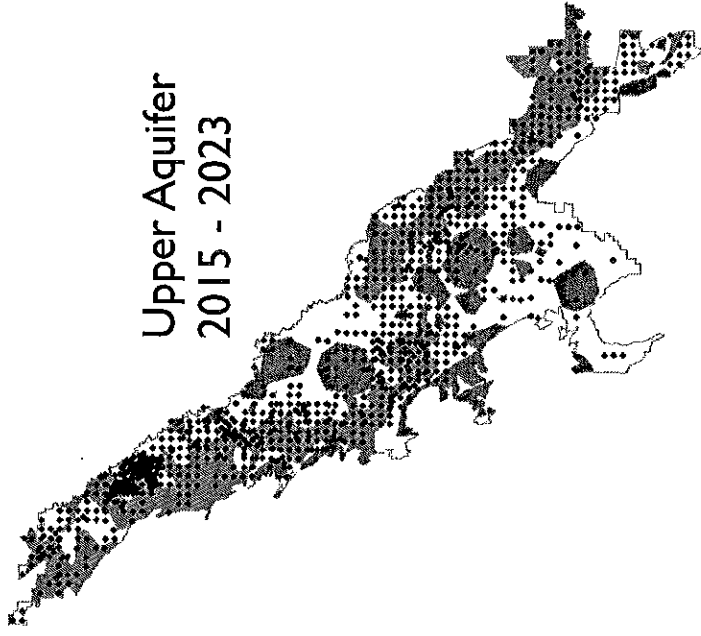


149

eki

TDS WELL IMPACTS

- Compared OSWCR production wells with concentration contours
- 45% of wells in areas with TDS > 1,000 mg/L and 5% in areas with TDS > 3,000 mg/L in 2005 – 2014
- 47% of wells in areas with TDS > 1,000 mg/L and 6% in areas with TDS > 3,000 mg/L in 2015 - 2023



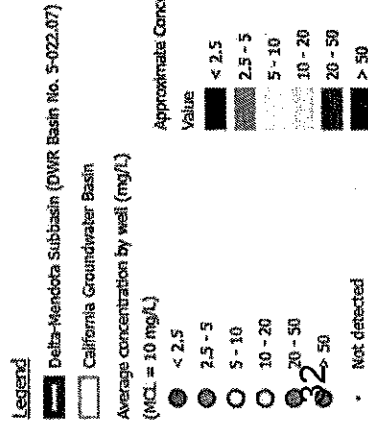
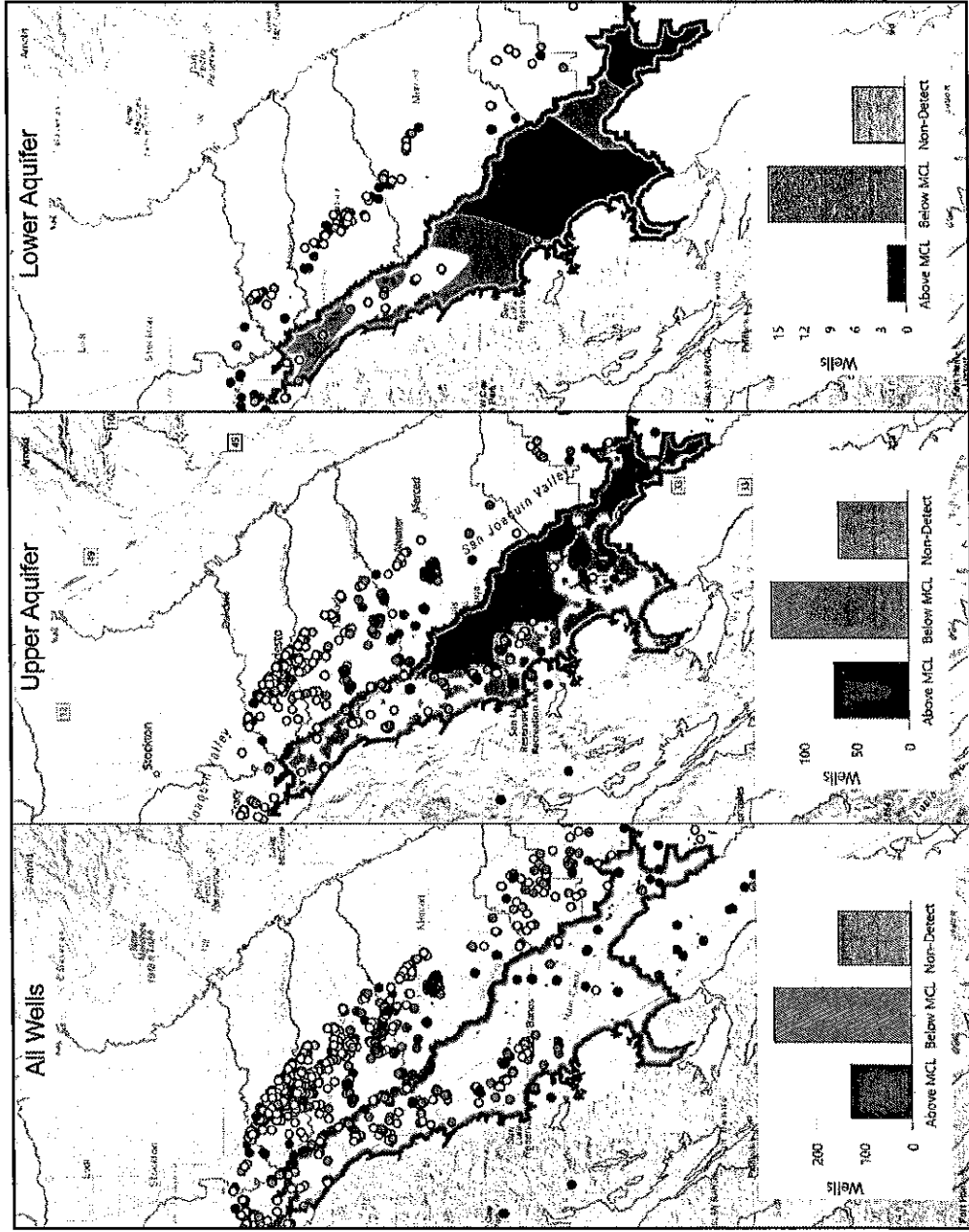
TDS Range	2005 - 2014			2015 - 2023		
	Lower	Upper	Grand Total	Lower	Upper	Grand Total
0 - 1000 mg/L	61%	54%	55%	60%	52%	53%
1000 - 3000 mg/L	39%	41%	40%	40%	41%	41%
> 3000 mg/L	0%	6%	5%	0%	7%	6%

158

eki

WATER QUALITY – NO₃ (PRE-SGMA)

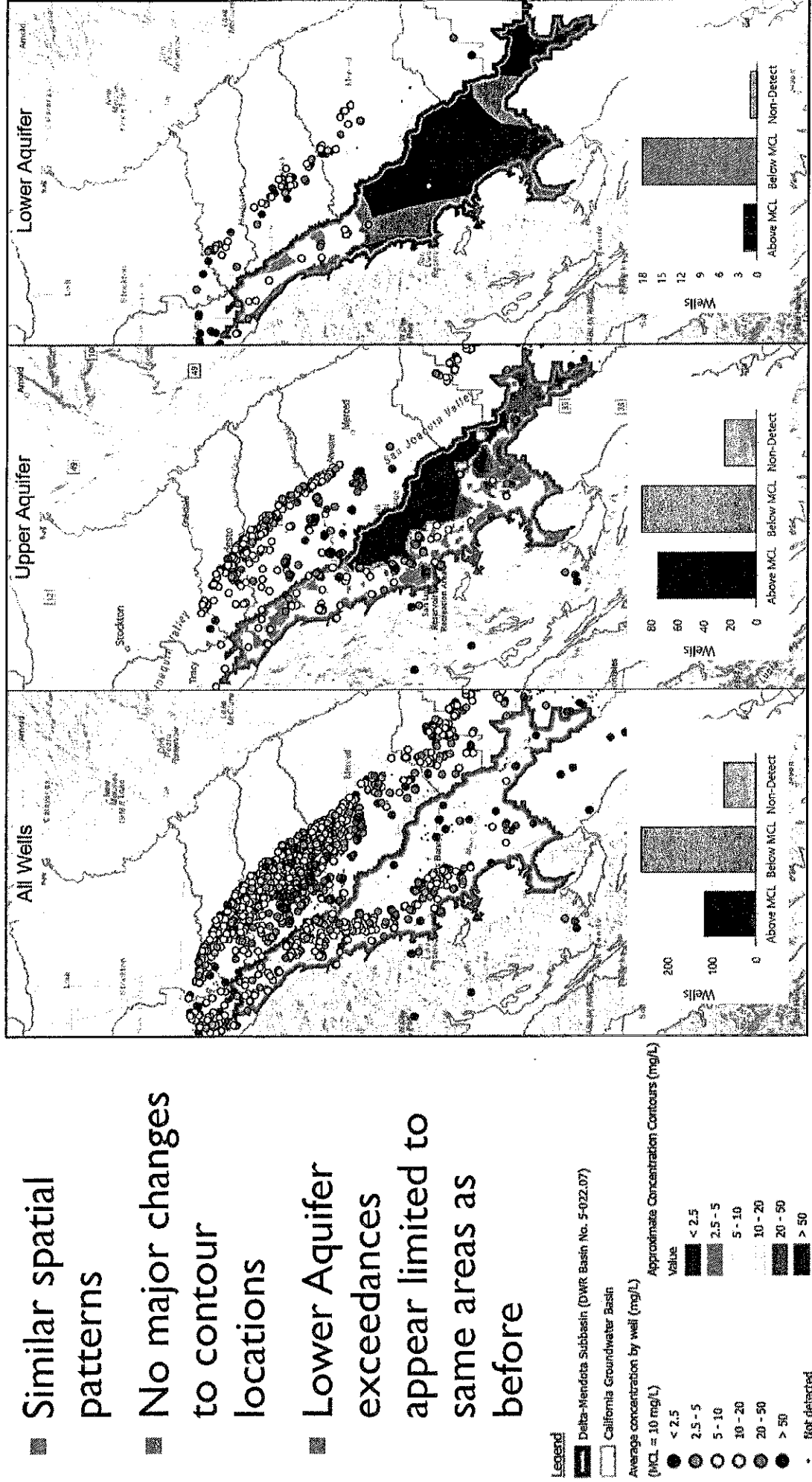
- MCL exceedances, largely in central portion of the Upper Aquifer (~13% of total volume)
- Any relationship with water levels appears highly localized
- Lower Aquifer has fewer exceedances and more limited data



151

WATER QUALITY – NO₃ (POST – SGMA)

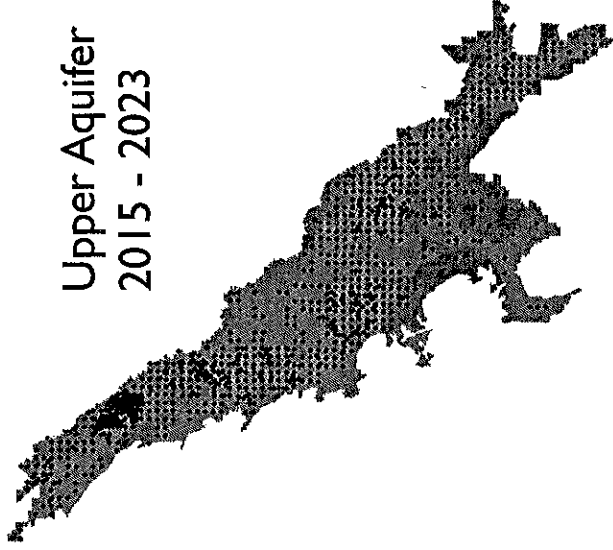
- Similar spatial patterns
- No major changes to contour locations
- Lower Aquifer exceedances appear limited to same areas as before



eki 1522

NITRATE WELL IMPACTS

- Compare OSWCR production wells with concentration contours
- 12% of wells in high NO3 areas in 2005 - 2014
- 11% of wells in high NO3 areas in 2015 - 2023
- Minimal change

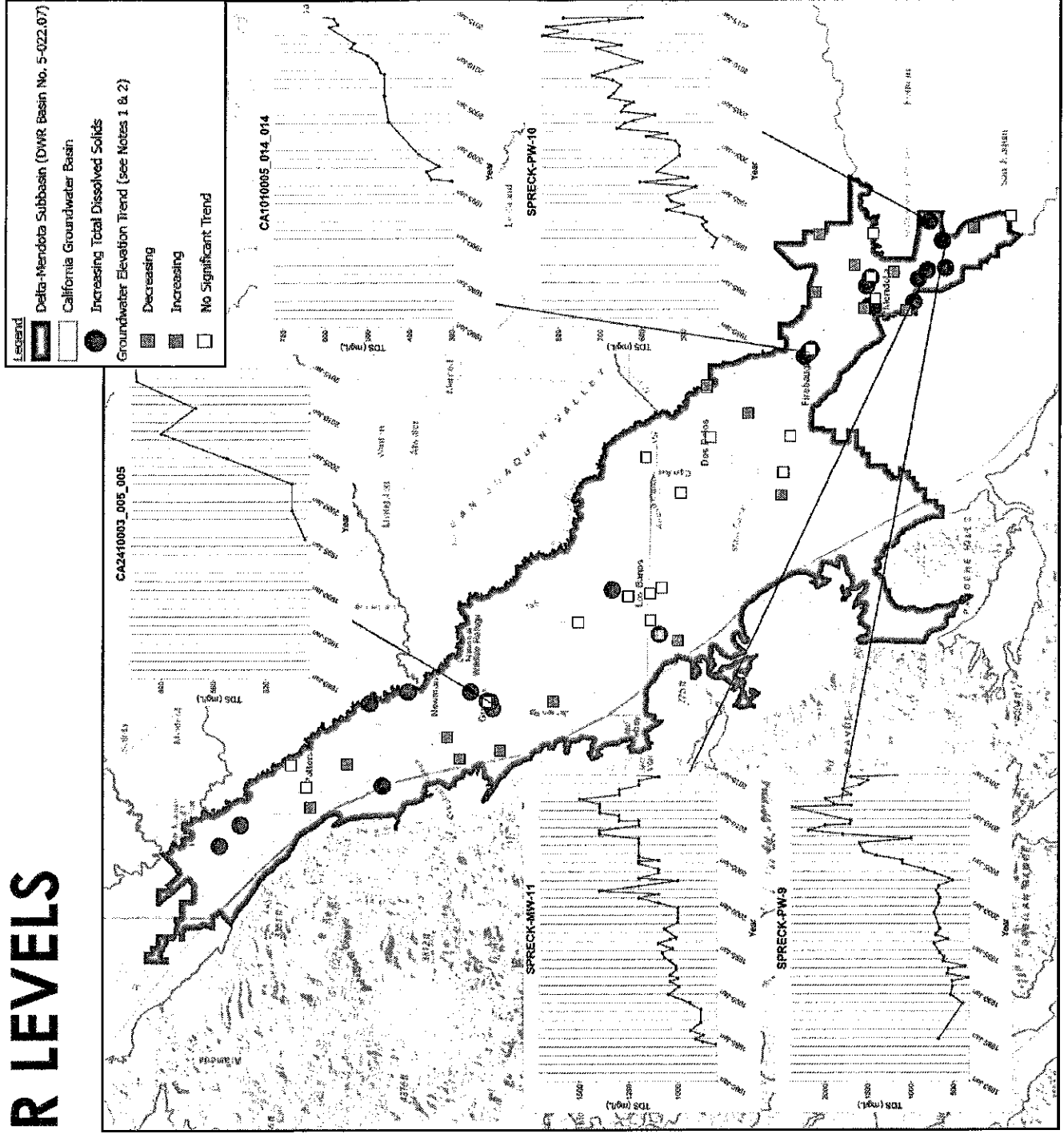


	2005 - 2014		2015 - 2023	
NO ₃ Range	Lower	Upper	Lower	Upper
0 - 10 mg/L	100%	86%	100%	86%
> 10 mg/L	0%	14%	0%	14%
	Grand Total		Grand Total	
	100%	88%	100%	89%

153

TDS VS WATER LEVELS

- Shifting concentration contours attributable to regional water level gradients
- TDS concentrations in individual wells not clearly linked to local water levels



154
eki

BRAINSTORM ON APPROACH TO WATER QUALITY SMCS

- SWRCB wants MOs/MTs at or below MCLs
- What is reasonable UR definition?

14. GSP IMPLEMENTATION SCHEDULE

157

eki

3 MONTH LOOK AHEAD

- January
 - Submit edits to HCM and Groundwater Conditions chapters
 - Finalize Subsidence and ISW RMNs
 - SWRCB Meeting (TBD)
 - Deliver Historical Water Budget
- February
 - Draft Project and Management Actions (PMA) and Plan Implementation chapters to be provided
 - SWRCB Meeting (TBD)
 - Deliver Projected Water Budget
- March
 - Draft Representative Monitoring Network chapter to be provided
 - Deliver Simulated PMA Scenarios



PROGRESS SUMMARY REPORT
Revision of Delta-Mendota Subbasin GSP in Response to DWR Inadequate Determination
 San Luis & Delta-Mendota Water Authority

CLIENT: San Luis & Delta-Mendota Water Authority
 CLIENT PM: Anona Dutton
 PROJECT #: C00041.09
 TASK ORDER #: F24-AA63-007

PROGRESS SUMMARY REPORT #: 5
 PERIOD ENDING: 30-Nov-23
 EKI PROJECT MANAGER: S. Xie
 PREPARED BY: S. Xie

WORK COMPLETED THIS PERIOD:

Work completed by EKI during the November 2023 billing period includes, among other items:
 Task 1 - Continue to compile and review information received from Subbasin GSAs in response to RFIs; obtain and analyze data from public sources;
 Task 2 - Continue to prepare descriptions of groundwater conditions: Conduct water level and water quality analyses; Prepare cross sections in Leapfrog;
 Task 3 - Continue to work with GSAs to refine the water level and water quality representative monitoring network; Conduct well impact analysis;
 Task 4 - Continue revision of groundwater flow model for use in evaluation of Subbasin water budget;
 Task 5 - Continue to draft the HCM, GWC, and PMA sections of the single GSP including developing figures; Address GSAs' comments on the Plan Area sections;
 Task 6 - None;
 Task 7 - Prepare presentations and participate in Coordination Committee and Technical Working Group meetings, prepare draft meeting minutes, prepare for meeting with Water Board staff on water level SMCs, internal coordination and budget management.

ISSUES/CHALLENGES:

The GSAs have been slow in providing responses to the RFIs, which has impeded progress and may affect the GSP production schedule.

WORK PLANNED FOR NEXT PERIOD:

EKI activities anticipated during the December 2023 billing period include, among others:
 Task 1 - Continue evaluation and presentation of existing data and data received from Subbasin GSAs;
 Task 2 - Continue preparation of descriptions of groundwater conditions; process basin wide water level, water quality, and subsidence data;
 Task 3 - Continue development of revised monitoring network to fill monitoring data gaps;
 Task 4 - Continue assessment and presentation of water usage within Subbasin, including evaluation of the sustainable yield;
 Task 5 - Continue development of the HCM, GWC, and PMA sections of the single GSP;
 Task 6 - None;
 Task 7 - Prepare presentations and participate in monthly Coordination Committee and Technical Working Group meetings, prepare draft meeting minutes, prepare for meeting with Water Board staff on water level SMCs, internal coordination and communication activities.

OTHER COMMENTS:

None.

TABLE 1
Project Invoice Summary - Delta-Mendota Subbasin GSP Revision in Response to DWR Inadequate Determination

Task No.	Description	Budget ^(a)	Billed This Period	Billed Prior Periods	Billed to Date	Budget Remaining	% Compl.	Projected Cost to Complete	Projected Variance ^(b)
1	Data Compilation, Review, and Analysis	\$ 75,163	\$ 9,730.24	\$ 53,393.30	\$ 63,123.54	\$ 12,039.46	80%	\$ 15,033	\$ (2,993)
2	Describe Current Groundwater Conditions	\$ 302,182	\$ 54,029.56	\$ 16,294.72	\$ 70,324.28	\$ 231,857.72	25%	\$ 226,637	\$ 5,221
3	Subbasin Monitoring Network	\$ 154,153	\$ 9,306.96	\$ 32,670.82	\$ 41,977.78	\$ 112,175.22	50%	\$ 77,077	\$ 35,099
4	Analysis of New Information	\$ 244,015	\$ 19,639.88	\$ 64,278.50	\$ 83,918.38	\$ 160,096.62	35%	\$ 158,610	\$ 1,487
5	Revision of Plan Elements	\$ 329,178	\$ 46,367.10	\$ 128,515.20	\$ 174,882.30	\$ 154,295.70	45%	\$ 181,048	\$ (26,752)
6	Description of Other Information	\$ 105,679	\$ -	\$ -	\$ -	\$ 105,679.00	0%	\$ 105,679	\$ -
7	Project Management and Coordination	\$ 190,682	\$ 17,348.50	\$ 73,500.70	\$ 90,849.20	\$ 99,832.80	45%	\$ 104,875	\$ (5,042)
TOTALS:		\$ 1,401,052	\$ 156,422.24	\$ 368,653.24	\$ 525,075.48	\$ 875,976.52	15%	\$ 868,957	\$ 7,019

Notes:

- (a) As identified in SLDMWA Task Order F24-AA63-007.
- (b) Estimated based upon percent complete. Values in parentheses (if any) are negative values.

158

Anthea Hansen

From: Jochimsen, Maria@DWR <Maria.Jochimsen@water.ca.gov>
Sent: Thursday, January 11, 2024 1:54 PM
To: Leslie Dumas
Cc: Kelsey Bradley; Anthea Hansen
Subject: RE: Question re: possible grant agreement amendment request

Hi Leslie,
I think this would be possible but let me ask the program manager and get some additional information.
Thanks,

Maria Jochimsen
Environmental Scientist
DRA / Financial Assistance Branch
Department of Water Resources
Cell: (916) 326-9025



saveourwater.com

From: Leslie Dumas <ldumas@woodardcurran.com>
Sent: Thursday, January 11, 2024 1:45 PM
To: Jochimsen, Maria@DWR <Maria.Jochimsen@water.ca.gov>
Cc: Kelsey Bradley <kbradley@woodardcurran.com>
Subject: Question re: possible grant agreement amendment request

Hi Maria

I've been checking in with the LPS for the Delta-Mendota SGM Grant funding to confirm that they are on track to spend all their construction \$\$ by April 30, 2025 (as we've only had one set of pre-construction documents submitted to date). For one of the projects, the Los Banos Creek Recharge and Recovery Project (Component 1), there have been some concerns expressed about this project being able to meet the spending deadline. One question I was asked, hence this email, is, if this project will not be able to spend that construction grant funding by April 30, 2025, could this funding instead be used to help with the construction of the Orestimba Creek Recharge and Recovery Project (which is currently under way). The two projects have similar LPS, are about 25 miles apart and provide the same overall benefits (basin recharge, flood protection, etc.) but for different communities and different parts of the basin.

Please let me know if this is a possibility and, if so, what kind of documentation you would require (other than a grant agreement amendment request). Thank you

Leslie

Blank